



For Immediate Release
November 1, 2021
Contact: [Russell Blair](#)
(860) 559-4873

HARTFORD PUBLIC LIBRARY ANNOUNCES REOPENING OF ARTWALK AND 2021-22 SEASON LINEUP

*Nov. 5 opening to feature 'Portrait of a Picture' exhibition by
New Britain artist Wladyslaw Prosol*

(Hartford, CT) – **ArtWalk** at Hartford Public Library will reopen this month with an exhibition of works by New Britain artist [Wladyslaw Prosol](#).

The show, "Portrait of a Picture," is the first in the space since February 2020. An opening night reception will be held at the Downtown Library on Friday, Nov. 5, from 5:30 p.m. to 7:30 p.m.

"We are thrilled to be able to safely welcome visitors back to the ArtWalk this fall," said **Hartford Public Library President and CEO Bridget E. Quinn**. "We know this is a popular offering at our Downtown Library and look forward to a series of varied exhibitions by talented local artists."

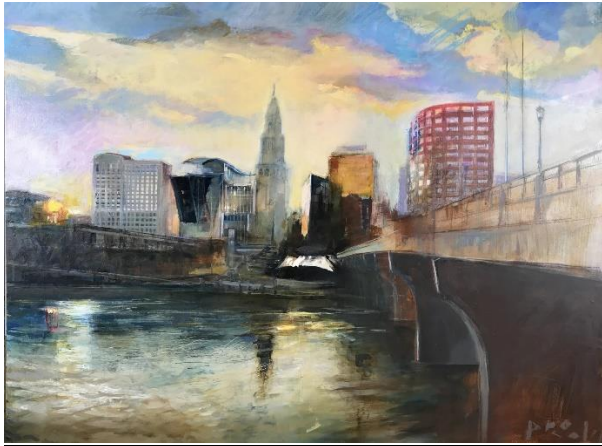
"Our first physical exhibit since we closed the ArtWalk gallery in March 2020 for COVID-19, Wladyslaw Prosol's art is a vibrant celebration of color and shape," said **Hartford Public Library Executive Director of Culture and Communications Brenda Miller**. "We couldn't be more delighted to open our beloved gallery with this show."

Prosol works in acrylic, oil and experimental art. His work is inspired by a fascination with what happens at the moment when we recognize visions in the mind's eye and rapidly manifest them in the form of painting. This approach automatically provokes questions about the role of traditional painting and its impact in the context of digital art.

He was born in Poland and trained as an architect as well as an artist at the Krakow Polytechnic University. He has 20 years of professional experience in urban planning, architecture, interior and commercial design, including design work for Yale University and on the Storrs Center development.

ArtWalk at Hartford Public Library is open for visitors Monday-Thursday from 9 a.m. to 6 p.m. and Fridays and Saturdays from 9 a.m. to 5 p.m. The gallery is located at the Library's Downtown location at 500 Main St., Hartford, 06103. Masks are required in the gallery and in the library. **ArtWalk** is supported by funding from The Edward C. & Ann T. Roberts Foundation.

2021-22 ArtWalk Schedule



Portrait of a Picture

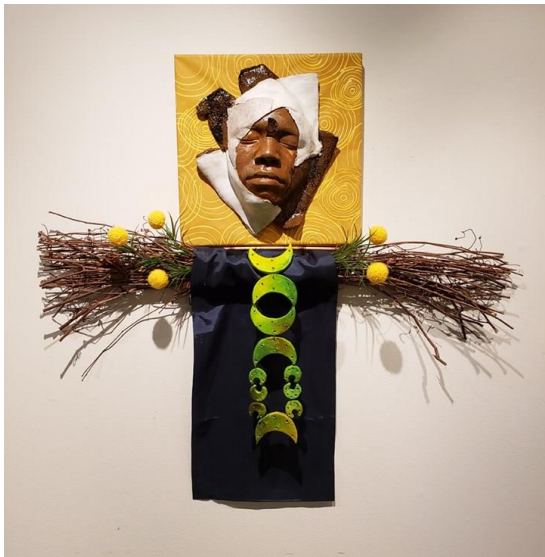
Wladyslaw Prosol

Exhibit runs: November 5 – December 11, 2021

Reception: Friday, November 5, 5:30-7:30 p.m.

ArtWalk Gallery, 3rd Floor, Downtown Library

View abstract paintings and nontraditional landscape paintings by New Britain-based architect, Wladyslaw Prosol.



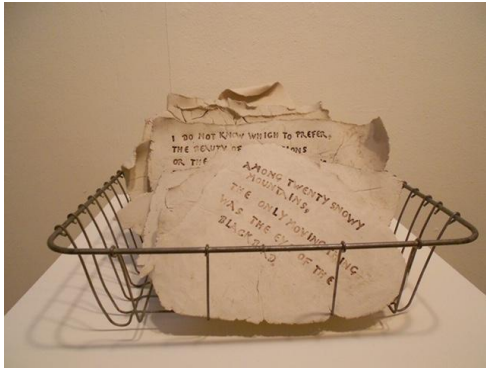
The Adornment Series: Images of Empowerment

Michelle Thomas

Exhibit runs: January 7 – February 9, 2022

Reception: Friday, January 7, 5:30-7:30 p.m.

Hartford's own Michelle Thomas creates large-scale works that use ceramic mask making techniques and found objects to create sculptural portrayals of people of African descent in the United States.



Words in Clay, Words on Paper

James Finnegan & Michelle Cotugno

Exhibit runs: March 11 – April 23, 2022

Reception: Friday, March 11, 5:30-7:30 p.m.

This exhibit will honor the written word, highlighting the dynamic collaboration between writers and artists. Sculptural clay works by Michelle Cotugno will be displayed along with a selection of fine letterpress poetry broadsides selected by James Finnegan.



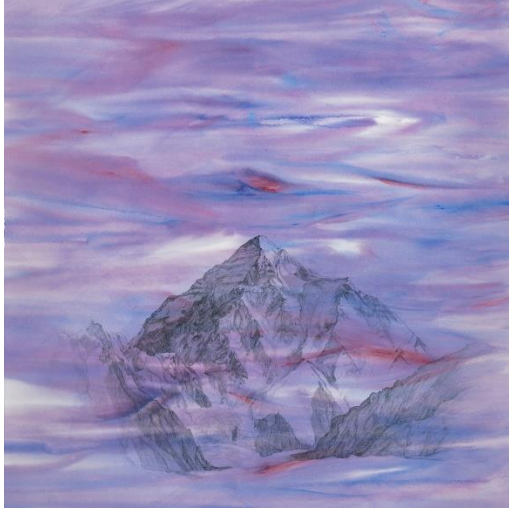
Artifact

Megyn Craine

Exhibit runs: May 13 – June 25, 2022

Reception: Friday, May 13, 5:30-7:30 p.m.

Megyn Craine is an interdisciplinary artist who sees art making as a process of discovery. Her work is a reflection of how she interprets the world around her. It encourages us to look a little deeper, to question the way we understand our own world and its meanings for us.



Gateway to Places We're Told We Cannot Go

Christa Whitten

Exhibit runs July 15 – August 27, 2022

Reception: Friday, July 15, 5:30-7:30 p.m.

This series focuses on the partial or completely restricted access to powerful, spiritually-charged locations around the globe. Although denial of access can be based on a variety of factors, this show addresses restrictions which involve gender.

-30-

About Hartford Public Library

Now celebrating its 127th year, Hartford Public Library remains at the forefront of redefining the urban library experience in the 21st century. With locations throughout the city, the library provides education, intellectual enrichment and cultural development for thousands of children, youth and adults every year. Hartford Public Library has also gained local and national recognition for its wide range of new initiatives and partnerships designed to meet the needs of a diverse and dynamic city and region, including immigration services, employment assistance and youth leadership training. www.hplct.org.