

ARCHITECTURAL NOTES

- VERIFY SIZES, DIMENSIONS, AND WITH ARCHITECTURAL AND INTERIORS DRAWINGS. WHERE CONFLICTS OCCUR, ARCHITECTURAL DRAWINGS TAKE PRECEDENCE.
- WHERE EXACT DIMENSIONS ARE NOT CALLED FOR, THE SCALE OF THIS DRAWING IS SUFFICIENTLY ACCURATE FOR DETERMINING THE LOCATIONS OF EQUIPMENT. WHERE EXACT DIMENSIONS ARE CALLED FOR, THE REFERENCE SURFACE SHALL BE THE FINAL FINISHED SURFACE INCLUDING ANY ACOUSTIC FINISHES
- WHERE METAL OR PLASTIC LOUDSPEAKER GRILLES ARE SHOWN INSTALLED IN PAINTED CEILING OR WALL SURFACES, THE GENERAL CONTRACTOR SHALL PAINT THE GRILLES TO MATCH THE ADJACENT SURFACE PRIOR TO ASSEMBLY AND INSTALLATION.

ELECTRICAL NOTES

- VERIFY SIZES, DIMENSIONS, AND LOCATIONS WITH THE ARCHITECTURAL AND INTERIOR DRAWINGS. WHERE CONFLICTS OCCUR, ARCHITECTURAL DRAWINGS TAKE PRECEDENCE.
- ALL WORK SHALL BE PERFORMED IN ACCORDANCE WITH NATIONAL, LOCAL, AND OTHER APPLICABLE CODES.
- ALL AUDIOVISUAL (AV) SYSTEM EQUIPMENT IS FOR REFERENCE ONLY. SUCH EQUIPMENT WILL BE PROVIDED AND INSTALLED BY THE AV INTEGRATOR, NOT THE ELECTRICAL CONTRACTOR. ALL OTHER CONSTRUCTION WORK ON THESE DRAWINGS IS BY THE GENERAL CONTRACTOR, IT CONTRACTOR, OR ELECTRICAL CONTRACTOR, UNLESS OTHERWISE NOTED.
- WHERE EXACT DIMENSIONS ARE NOT CALLED FOR, THE SCALE OF THIS DRAWING IS SUFFICIENTLY ACCURATE FOR DETERMINING LOCATIONS OF EQUIPMENT, JUNCTION BOXES, OUTLETS, RACEWAY, ETC. WHERE EXACT DIMENSIONS ARE CALLED FOR, THE REFERENCE SURFACE SHALL BE THE FINAL FINISHED SURFACE INCLUDING ANY ACOUSTIC TREATMENT.
- WHERE POWER, COMMUNICATION, OR AV JUNCTION BOXES MUST COORDINATE WITH FIXED MILLWORK OR ARCHITECTURAL FEATURES, REFER TO THE ARCHITECTURAL DRAWINGS FOR EXACT DIMENSIONS AND DETAILS.
- WHERE POWER, COMMUNICATION, AND AV JUNCTION BOXES ARE GROUPED TOGETHER AT THE SAME LOCATION AND ELEVATION, INSTALL AS CLOSE TOGETHER AS PHYSICALLY POSSIBLE WITH SUFFICIENT SEPARATION FOR INDIVIDUAL DEVICE COVER PLATES.
- POWER SOCKET OUTLETS SHOWN ON THESE DRAWINGS ARE SHOWN FOR REFERENCE ONLY AND DEDICATED FOR USE WITH SPECIFIC AV EQUIPMENT. ADDITIONAL UTILITY SOCKET OUTLETS MAY BE INDICATED ON ARCHITECTURAL DRAWINGS OR REQUIRED BY CODE.
- ALL AV SYSTEM POWER CIRCUITS SHALL BE PROTECTED BY 20AMP BREAKERS UNLESS OTHERWISE NOTED.
- WHERE DUPLEX AND QUAD POWER SOCKET OUTLETS ARE SHOWN ON THESE DRAWINGS WITHOUT REFERENCE TO A SPECIFIC CIRCUIT, PANEL OR ISOLATED EARTH, THESE SOCKET OUTLETS MAY BE POWERED FROM STANDARD BUILDING POWER PANELS AND MAY BE COMBINED WITH OTHER CIRCUITS AND CONVENIENCE SOCKET OUTLETS AS CODES AND GOOD ENGINEERING PRACTICE ALLOW.
- WHERE POWER CIRCUITS ARE SHOWN TERMINATING IN JUNCTION BOXES WITHOUT RECEPTACLES, THE WIRES SHALL BE TAPED AND THE BOXES COVERED; THESE WILL BE CONNECTED BY THE ELECTRICAL CONTRACTOR DURING THE INSTALLATION OF SPECIAL AV EQUIPMENT, TO BE COORDINATED WITH THE AV CONTRACTOR.
- AV SYSTEM POWER CIRCUITS SHALL BE KEPT ISOLATED FROM LIGHTING DIMMERS, LARGE MOTORIZED EQUIPMENT, AND OTHER INDUCTIVE OR 'NOISY' ELECTRICAL LOADS.
- EMPTY CONDUIT RUNS SHOWN ON THESE DRAWINGS SHOW ONLY INTERCONNECTIONS BETWEEN TERMINATION POINTS. THE EXACT PATH OF THE CONDUIT IS TO BE COORDINATED ON SITE.
- WHERE POSSIBLE, EMPTY CONDUIT RUNS FOR AV SIGNAL CIRCUITS SHALL BE KEPT 3' FROM PARALLEL POWER CIRCUITS IN RUNS UNDER 80', AND 6FT IN RUNS OVER 80'. AV WIRING, RACEWAYS, AND CONDUIT MUST NOT RUN PARALLEL TO POWER MAINS OF POTENTIAL IN EXCESS OF 600V.
- ALL EMPTY CONDUIT SHALL BE 3/4" UNLESS OTHERWISE NOTED. ALL CONDUIT SHALL BE EMT, DEBURRED, CLEANED, CAPPED, TAGGED, AND FURNISHED WITH PULL STRINGS.
- THERE SHALL BE A MINIMUM OF ONE PULL BOX FOR EVERY 100' OF STRAIGHT EMPTY CONDUIT AND EXTRA PULL BOXES FOR EVERY TWO 90 DEGREE BENDS IN A CONDUIT RUN.
- THE METHOD OF INSTALLATION OF BOXES AND THE PASSAGE OF CONDUIT THROUGH ACOUSTICALLY SENSITIVE WALLS SHALL BE COORDINATED WITH THE ACOUSTICAL CONSULTANT. ELECTRICAL JUNCTION BOXES RECESSED INTO ACOUSTICALLY SENSITIVE WALLS SHALL HAVE THEIR BACKS SEALED WITH AIRTIGHT ADHESIVE OUTLET PADS. JUNCTION BOXES PLACED BACK-TO-BACK ON ACOUSTICALLY SENSITIVE WALLS SHALL NOT SHARE THE SAME STUD CAVITY.

AUDIOVISUAL SHEET LIST - PHASE 4

- AV-0.00 P4 AUDIOVISUAL GENERAL NOTES - PHASE 4
- AV-1.01 P4 AUDIOVISUAL MAIN FLOOR PLAN - PHASE 4
- AV-1.04 P4 AUDIOVISUAL MAIN FLOOR RCP - PHASE 4
- AV-2.01 P4 AUDIOVISUAL ENLARGED PLANS/RPCS - PHASE 4
- AV-2.02 P4 AUDIOVISUAL ENLARGED PLANS/RPCS - PHASE 4
- AV-4.01 P4 AUDIOVISUAL DETAILS - PHASE 4
- AV-4.02 P4 AUDIOVISUAL DETAILS - PHASE 4
- AV-9.01 P4 AUDIOVISUAL FUNCTIONAL DIAGRAMS - PHASE 4
- AV-9.02 P4 AUDIOVISUAL FUNCTIONAL DIAGRAMS - PHASE 4
- AV-9.03 P4 AUDIOVISUAL FUNCTIONAL DIAGRAMS - PHASE 4
- AV-9.04 P4 AUDIOVISUAL FUNCTIONAL DIAGRAMS - PHASE 4

AUDIOVISUAL INFRASTRUCTURE SCHEDULE

INFRASTRUCTURE MARK	DESCRIPTION	SPECIFICATION	MOUNTING HEIGHT (AFF)	FLUSH/SURFACE	CONDUIT	POWER	DATA
AV-A	Back Box for AV Tie Lines	NEMA Type 1 12"x12"x4"	1' - 6"	Surface	N/A	(2) Duplex, 20A Dedicated Each	N/A
AV-B	Back Box for AV Tie Lines	NEMA Type 1 10"x10"x4"	1' - 6"	Surface	(2) 1-1/2" to AV-A	(2) Duplex, 20A Dedicated Each	(2) Ports
AV-C	Back Box for AV Tie Lines	NEMA Type 1 10"x10"x4"	1' - 6"	Surface	(2) 1-1/2" to CB	(2) Duplex, 20A Dedicated Each	(4) Ports
AV-D	Back Box for AV Tie Lines	NEMA Type 1 12"x12"x4"	1' - 6"	Surface	N/A	(2) Duplex, 20A Dedicated Each	N/A
AV-E	Back Box for AV Tie Lines	NEMA Type 1 8"x8"x4"	1' - 6", UON	Surface	(2) 1-1/2" to AV-D	(1) Duplex, 20A Dedicated	(2) Ports
AV-F	Back Box for AV Tie Lines	NEMA Type 1 10"x10"x4"	1' - 6"	Surface	(2) 1-1/2" to CB	(2) Duplex, 20A Dedicated Each	(4) Ports
AV-G1	Back Box for AV Tie Lines	NEMA Type 1 8"x8"x4"	1' - 6"	Flush	(2) 1" to CB	(1) Duplex, 20A Dedicated	(2) Ports
AV-G2	Back Box for AV Tie Lines	NEMA Type 1 8"x8"x4"	1' - 6"	Flush	(2) 1" to CB, (2) 1" to AV-G1	(1) Duplex, 20A Dedicated	(2) Ports
AV-G3	Back Box for AV Tie Lines	NEMA Type 1 8"x8"x4"	18" - 1" AFF / 6" Above Pipe Grid	Flush	(2) 1-1/2" to CB	(1) Duplex, 20A Dedicated	(2) Ports
AV-H	Back Box for AV Tie Lines	4-Gang	1' - 6"	Flush	(2) 1" to CB	(1) Duplex, 20A Dedicated	(2) Ports
CB	Collector Box for AV Equipment Racks	NEMA Type 1 Size As Required	9' - 0"	Surface	(1) 1" to Fire Alarm Panel	(4) Duplex, 20A Dedicated Each	(4) Ports
CP	Back Box for Control Panel	2-Gang	4' - 0"	Flush	N/A	(1) 1" to CB	N/A
FP-A	Back Box for Flat Panel Display	CHIEF PAC525	4' - 6"	Flush	N/A	(1) Duplex	(2) Ports
HP-1	Wall-Mount Single Cup Headphone	Refer to AV Specs	4' - 0"	Surface	Free Air Integrated Cable to Local FP	N/A	N/A
HP-2	Back Box for Headphone Output	2-Gang With 1-Gang Mud Ring	3' - 6"	Flush	1" to Local FP	N/A	N/A
IN	Back Box for Audiovisual Input	3-Gang	1' - 6"	Flush	(1) 1-1/4" to P, (1) 1" to CB	(1) Duplex	(2) Ports
P	Back Box for Projector	2-Gang	Surface of Finished Ceiling	Surface	(1) 1-1/4" to CB	(1) Duplex	(2) Ports
PJ	Back Box for Motorized, Roll-Down Projection Screen	2-Gang	12' - 6"	Flush	(1) 1" to CB	(1) Duplex	N/A
S-1	Back Box for Pendant Loudspeaker	Refer to AV Specs	See AV Details	Pendant Hung	(1) 1" to CB or to Adjacent Loudspeaker	N/A	N/A
WM	Back Box for Wireless Mic Access Point	2-Gang	12' - 6"	Flush	(1) 1" to CB	N/A	N/A
YM-A	Back Box for AV Tie Lines	10X10X4 NEMA TYPE 1	1' - 6"	Surface	N/A	(2) Duplex	(4) Ports
YM-B	Back Box for AV Tie Lines	8X8X4 NEMA TYPE 1	1' - 6"	Surface	(2) 1-1/2" to AV-A	(1) Duplex	(2) Ports

AUDIOVISUAL EQUIPMENT SCHEDULE

TAG	EQUIPMENT DESCRIPTION
AVR-6	AV Equipment Rack, Desktop, 6U
AVR-14	AV Equipment Rack, Under Desk, 14U
AVR-45	AV Equipment Rack, Full Height
FPD-55	Flat Panel Display, Touch Screen, 55" Diagonal
HPH-1	Wall-Mount Single Cup Headphone w/ AutoPlay Trigger
PRJ-01	Projector
PSC-01	Projector Screen, 140" x 87.5", 12" Black Drop
SPK-01	Pendant Loudspeaker, 6" Diameter

HARTFORD PUBLIC LIBRARY
 INTERIOR RENOVATIONS
 500 MAIN STREET
 HARTFORD CT 06103

PHASE 4
 CONFORMED SET



DRAWING TITLE
 AUDIOVISUAL GENERAL
 NOTES - PHASE 4

STATE PROJ. NO.	
PROJ. NO.	221303
SCALE	
DATE	05/19/2025
DRAWN BY	SW
APPROVED BY	MM

ISSUE DATES		
NO.	DATE	PURPOSE

AV-0.00
 P4

**HARTFORD PUBLIC LIBRARY
 INTERIOR RENOVATIONS**
 500 MAIN STREET
 HARTFORD CT 06103

PHASE 4
 CONFORMED SET

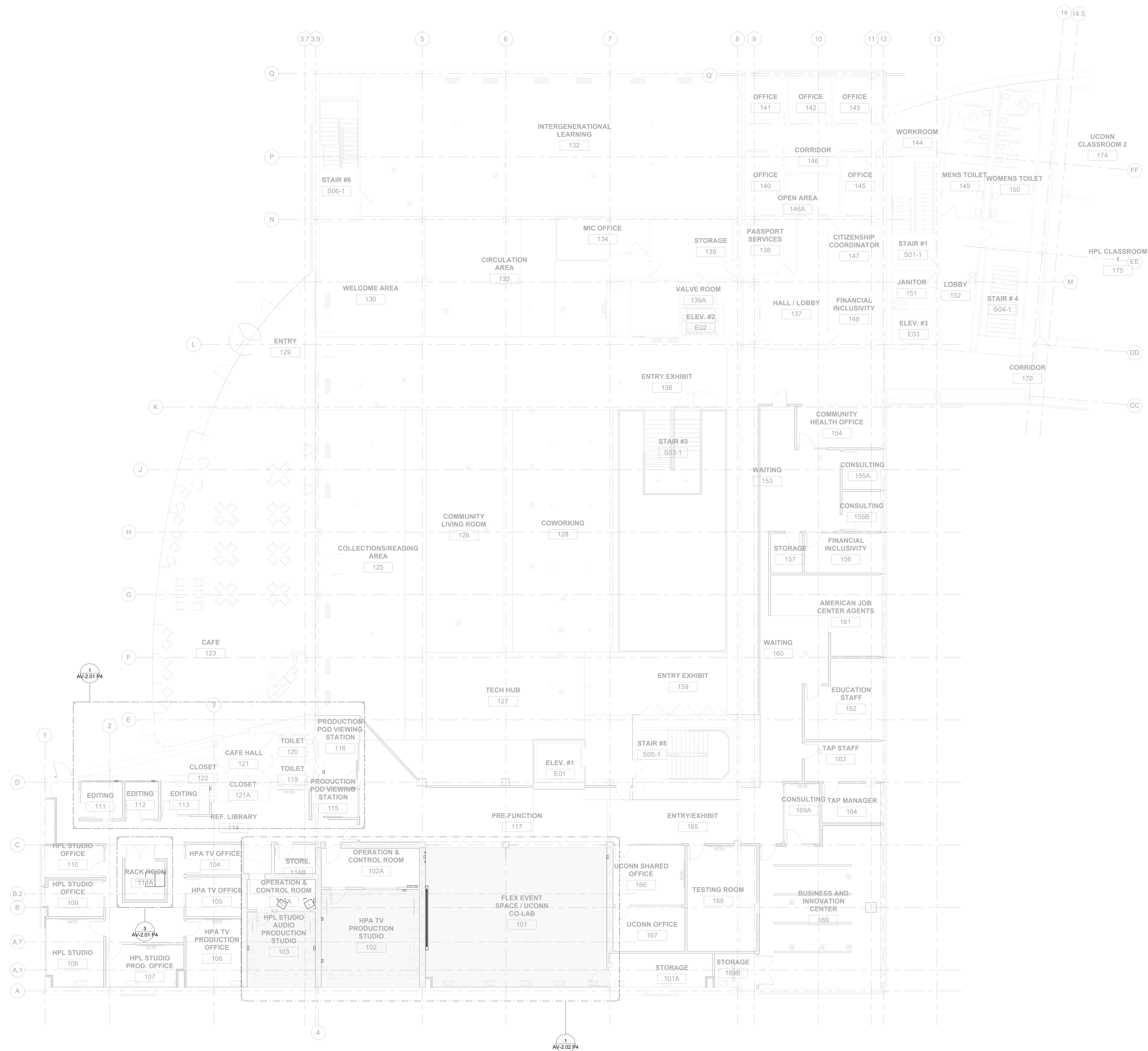


DRAWING TITLE
 AUDIOVISUAL MAIN
 FLOOR PLAN - PHASE 4

STATE PROJ. NO.	
PROJ. NO.	221303
SCALE	1/8" = 1'-0"
DATE	05/19/2025
DRAWN BY	SW
APPROVED BY	MM

ISSUE DATES		
NO.	DATE	PURPOSE

**AV-1.01
 P4**



**HARTFORD PUBLIC LIBRARY
 INTERIOR RENOVATIONS
 500 MAIN STREET
 HARTFORD CT 06103**

PHASE 4
 CONFORMED SET

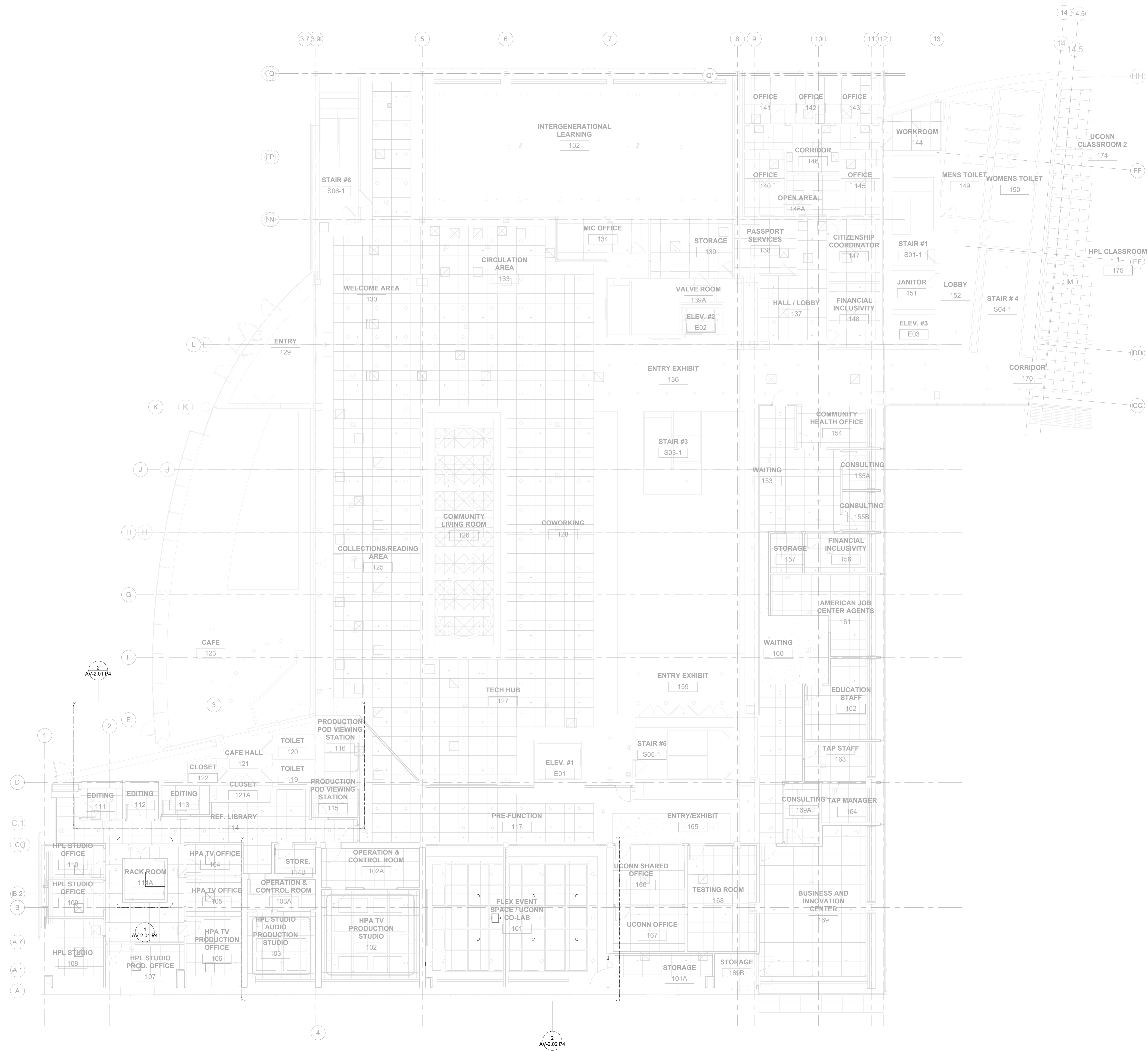


DRAWING TITLE
 AUDIOVISUAL MAIN
 FLOOR RCP - PHASE 4

STATE PROJ. NO.	
PROJ. NO.	221303
SCALE	1/8" = 1'-0"
DATE	05/19/2025
DRAWN BY	SW
APPROVED BY	MM

ISSUE DATES		
NO.	DATE	PURPOSE

**AV-1.04
 P4**



**HARTFORD PUBLIC LIBRARY
 INTERIOR RENOVATIONS
 500 MAIN STREET
 HARTFORD CT 06103**

PHASE 4
 CONFORMED SET

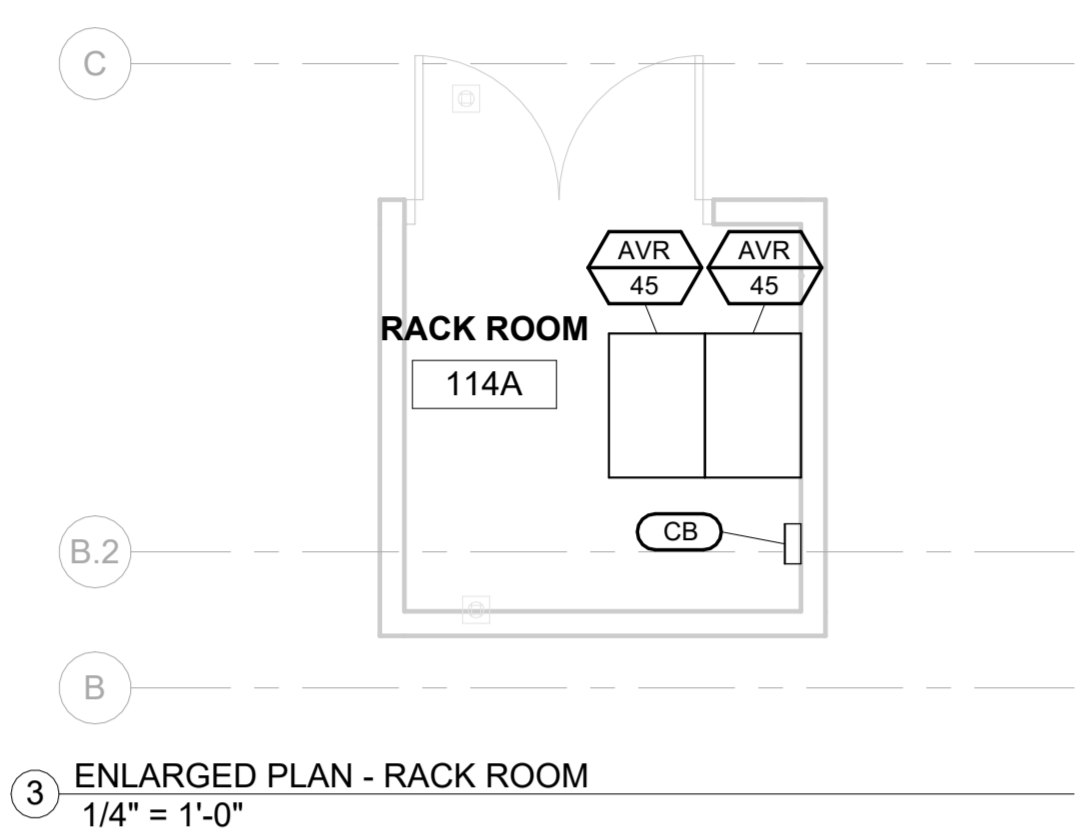


DRAWING TITLE
 AUDIOVISUAL ENLARGED
 PLANS/RCPs - PHASE 4

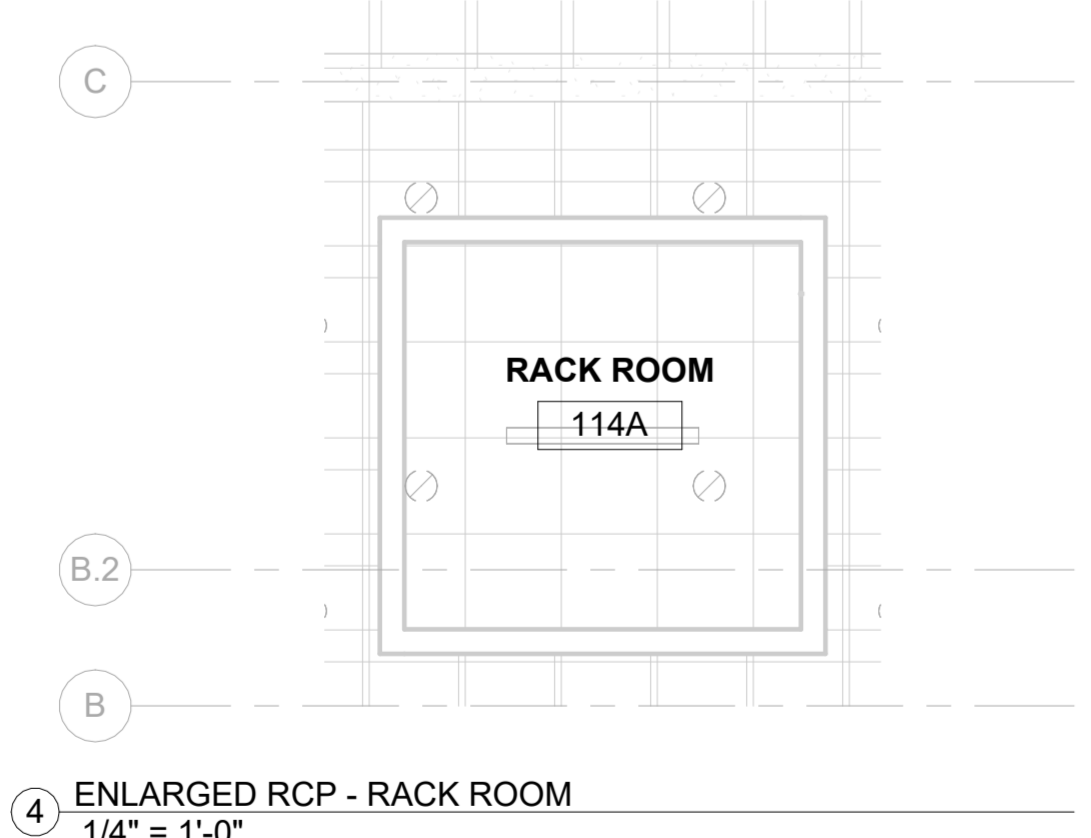
STATE PROJ. NO.	
PROJ. NO.	221303
SCALE	1/4" = 1'-0"
DATE	05/19/2025
DRAWN BY	SW
APPROVED BY	MM

ISSUE DATES		
NO.	DATE	PURPOSE

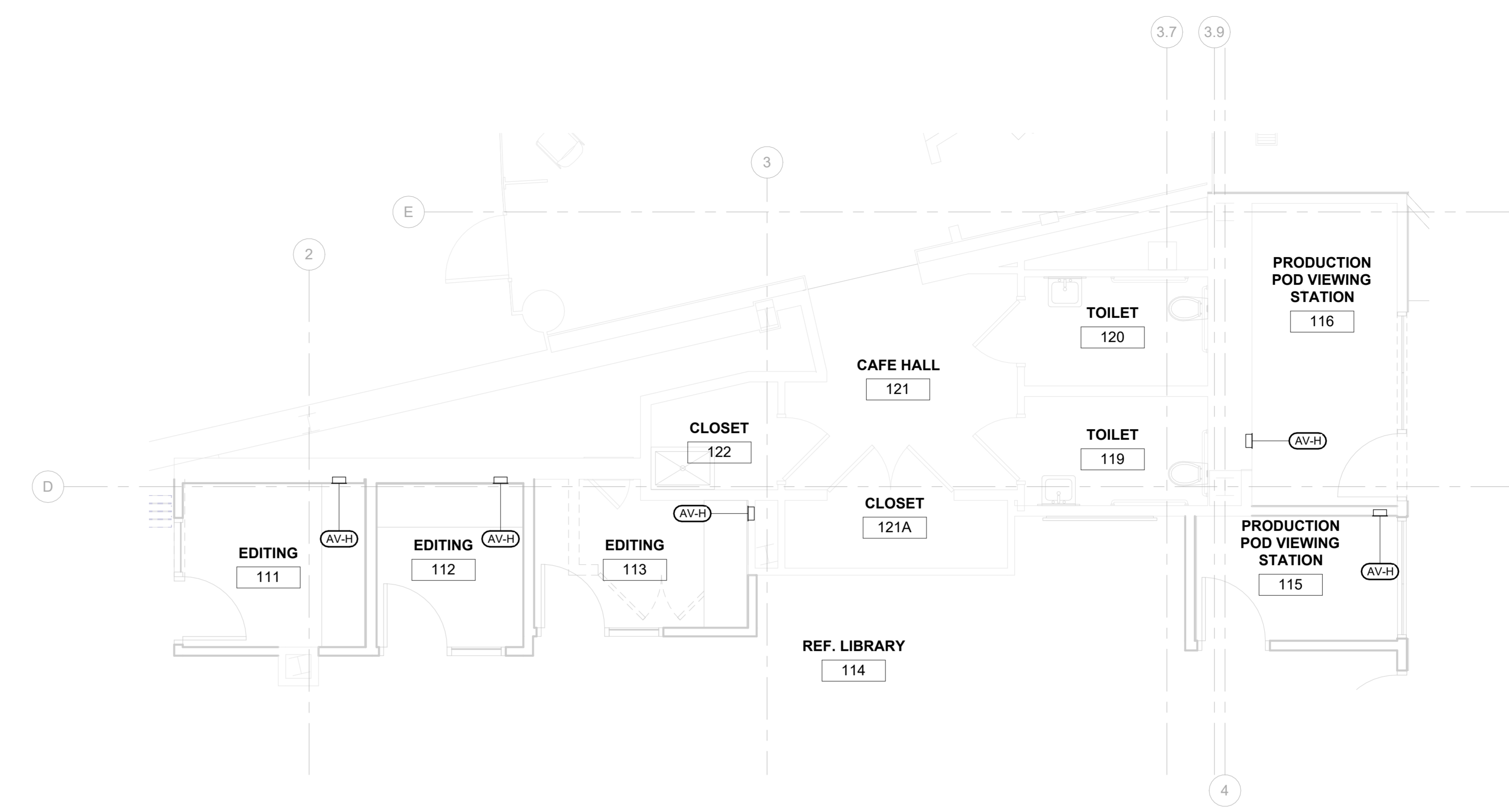
**AV-2.01
 P4**



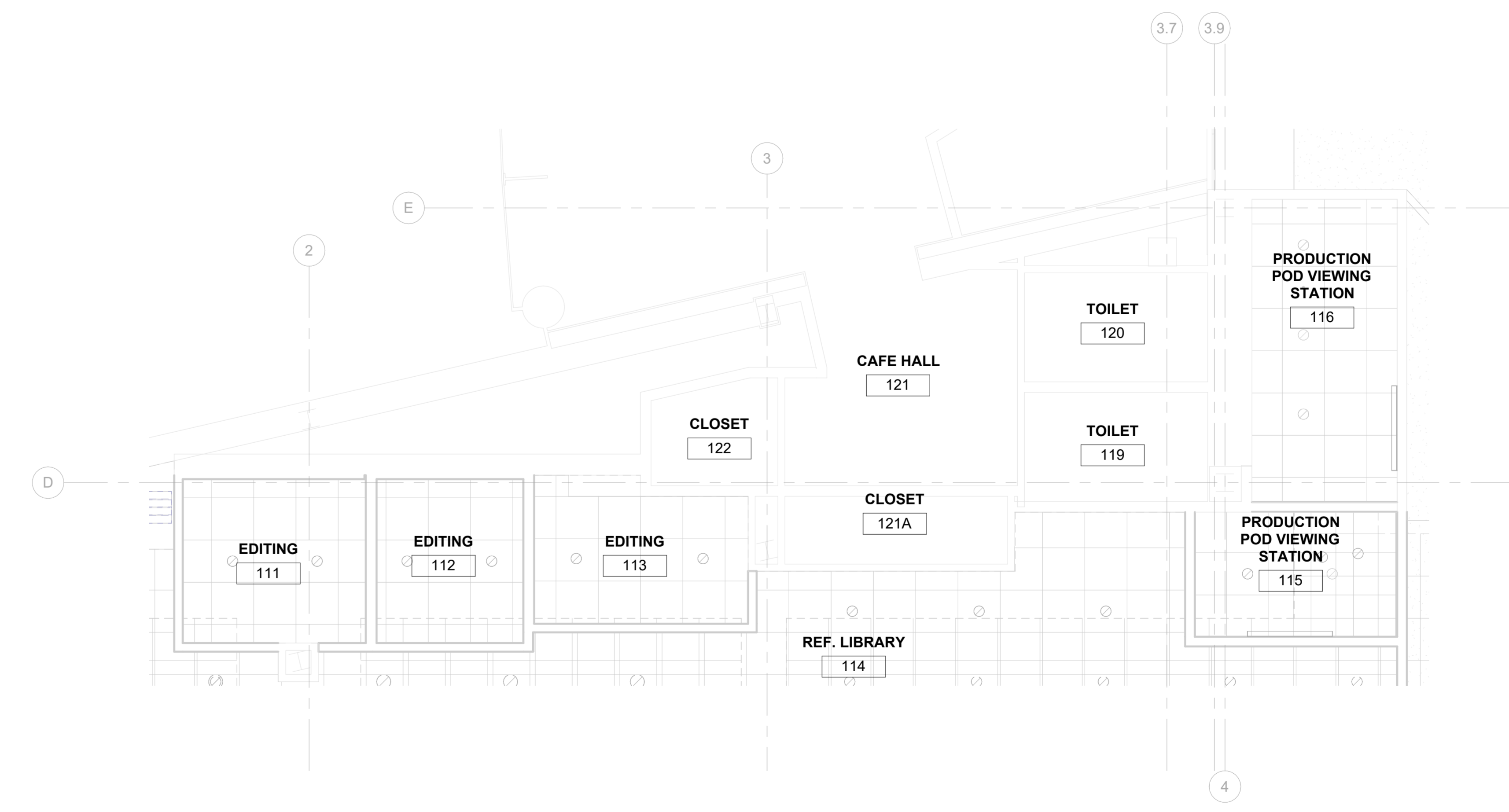
3 ENLARGED PLAN - RACK ROOM
 1/4" = 1'-0"



4 ENLARGED RCP - RACK ROOM
 1/4" = 1'-0"



1 ENLARGED PLAN - EDITING AND PRODUCTION POD ROOMS
 1/4" = 1'-0"



2 ENLARGED RCP - EDITING AND PRODUCTION POD ROOMS
 1/4" = 1'-0"

**HARTFORD PUBLIC LIBRARY
 INTERIOR RENOVATIONS**
 500 MAIN STREET
 HARTFORD CT 06103

PHASE 4
 CONFORMED SET

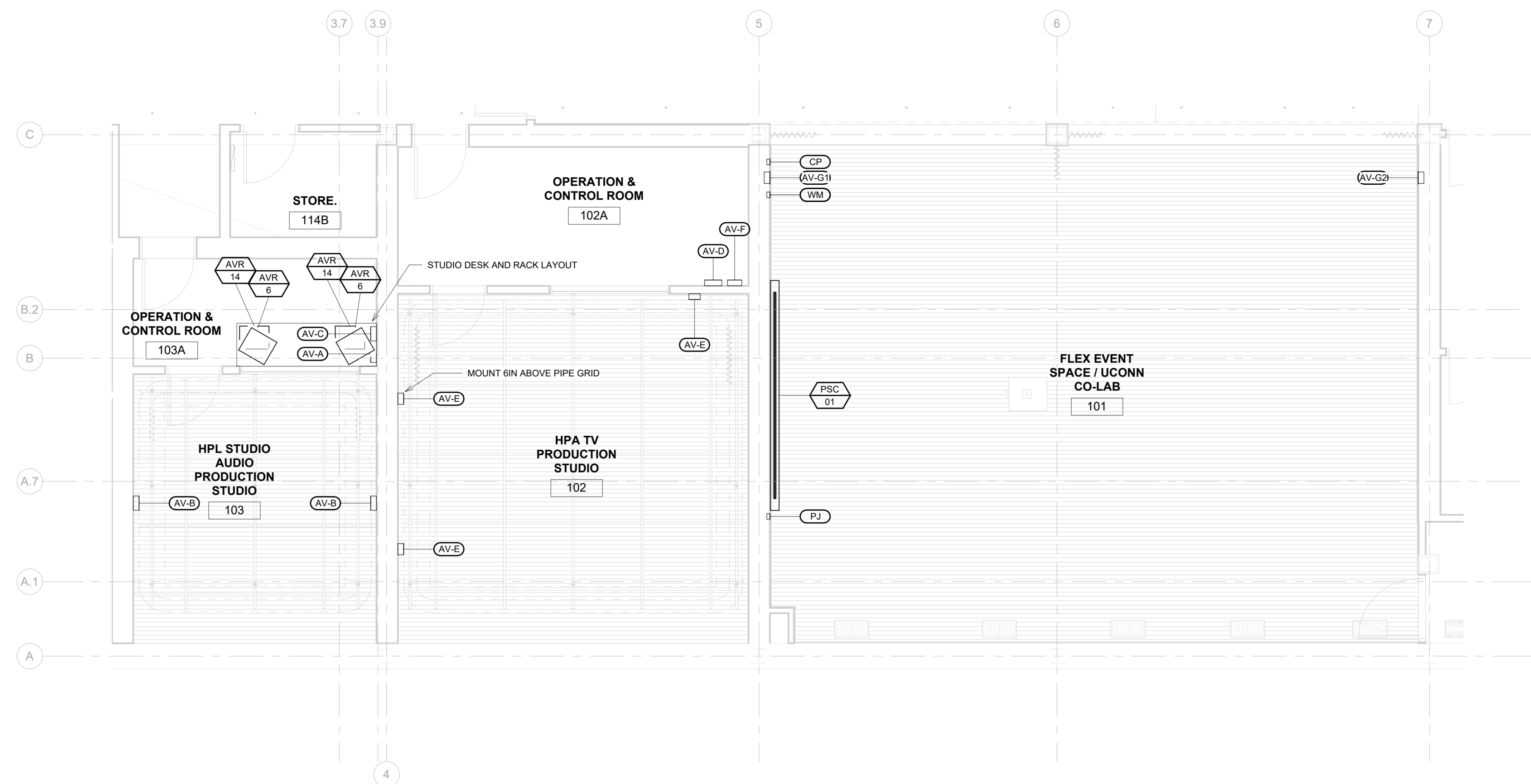


DRAWING TITLE
 AUDIOVISUAL ENLARGED
 PLANS/RCPs - PHASE 4

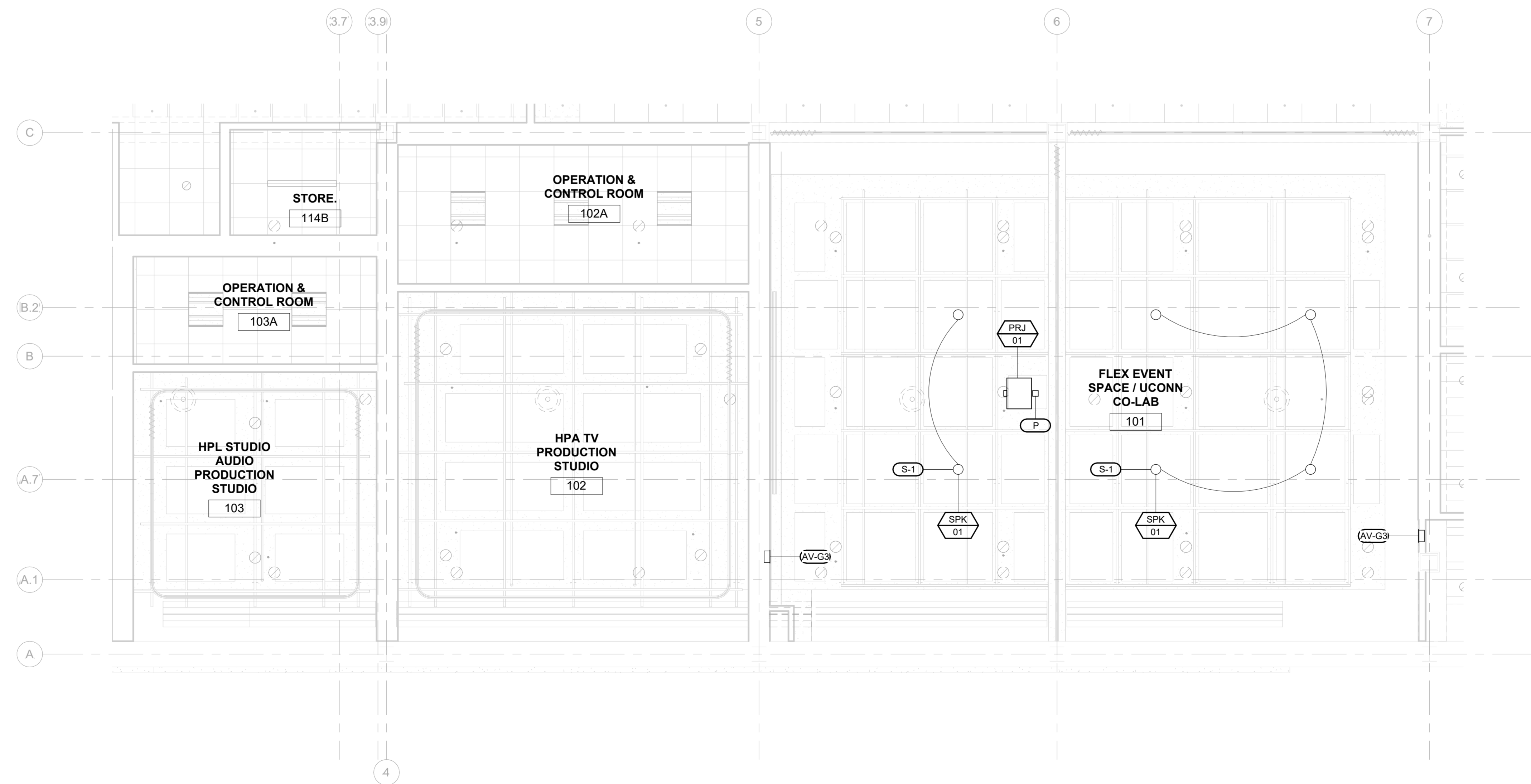
STATE PROJ. NO.	
PROJ. NO.	221303
SCALE	1/4" = 1'-0"
DATE	05/19/2025
DRAWN BY	SW
APPROVED BY	MM

ISSUE DATES		
NO.	DATE	PURPOSE

AV-2.02
P4



1 ENLARGED PLAN - STUDIOS AND FLEX EVENT SPACE
 1/4" = 1'-0"



2 ENLARGED RCP - STUDIOS AND FLEX EVENT SPACE
 1/4" = 1'-0"

**HARTFORD PUBLIC LIBRARY
 INTERIOR RENOVATIONS**
 500 MAIN STREET
 HARTFORD CT 06103

PHASE 4
 CONFORMED SET

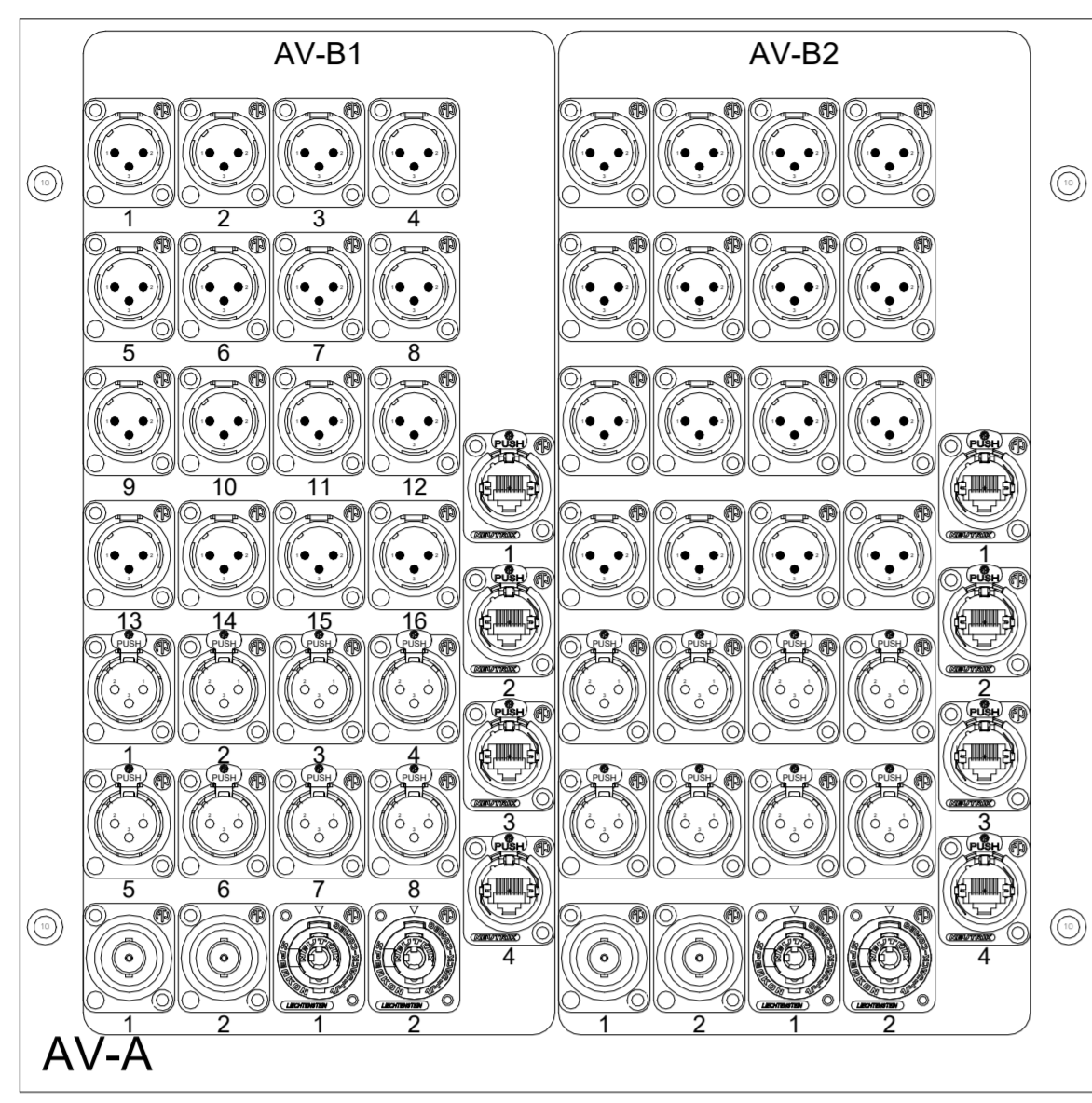


DRAWING TITLE
**AUDIOVISUAL DETAILS -
 PHASE 4**

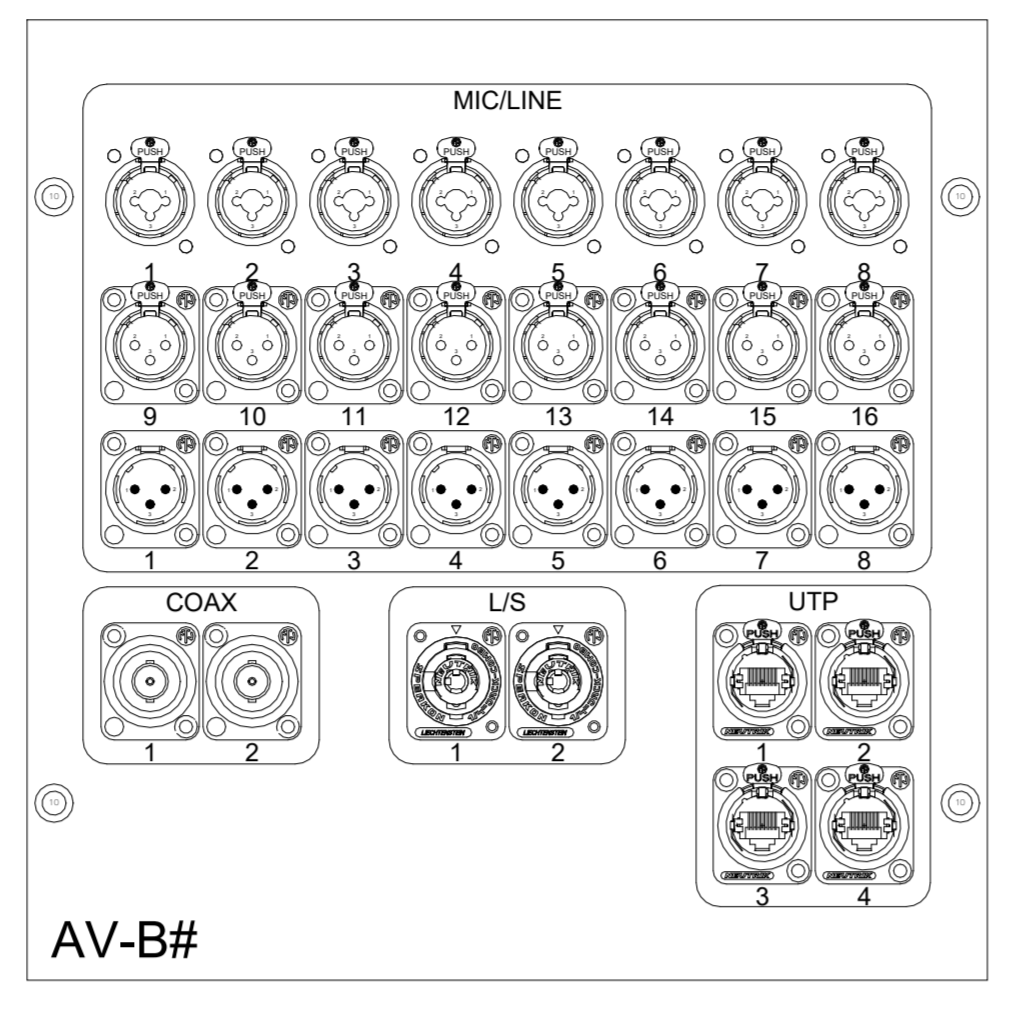
STATE PROJ. NO.	
PROJ. NO.	221303
SCALE	6" = 1'-0"
DATE	05/19/2025
DRAWN BY	SW
APPROVED BY	MM

ISSUE DATES		
NO.	DATE	PURPOSE

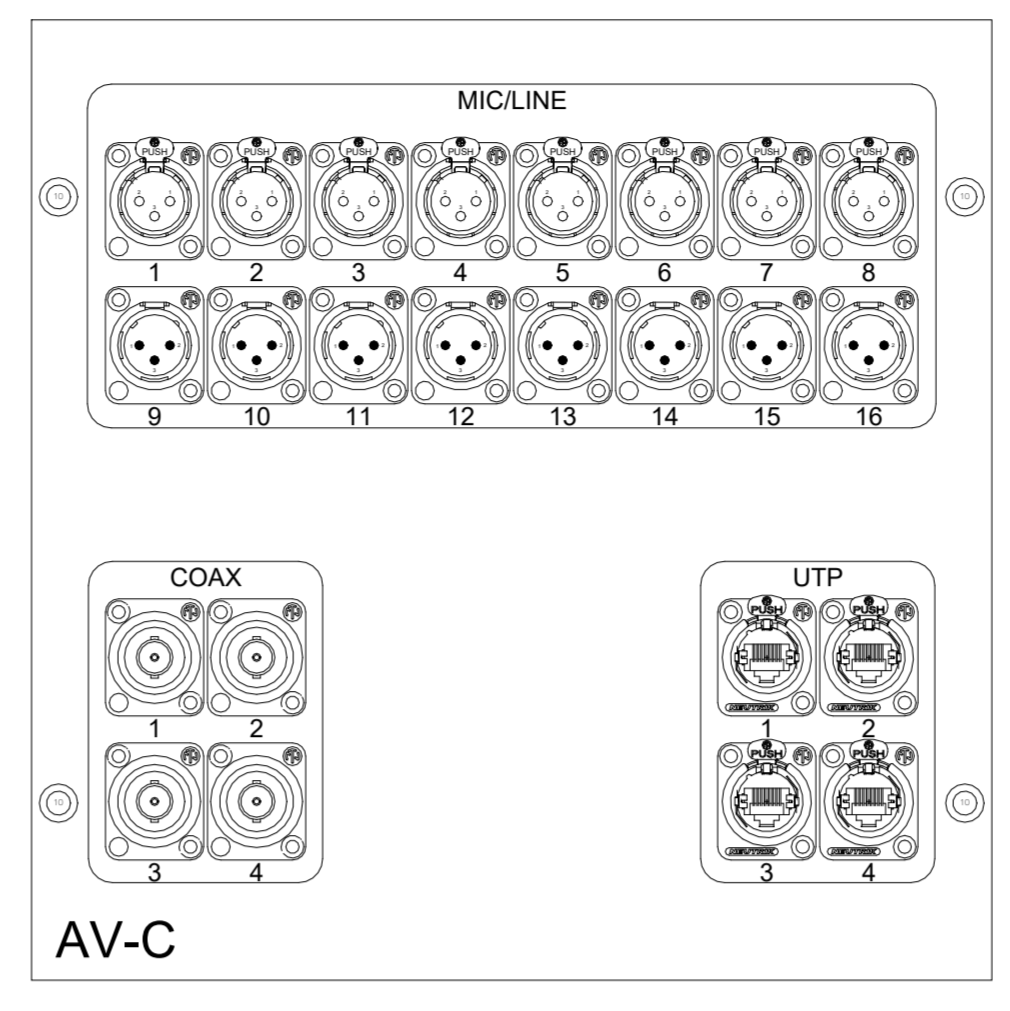
**AV-4.01
 P4**



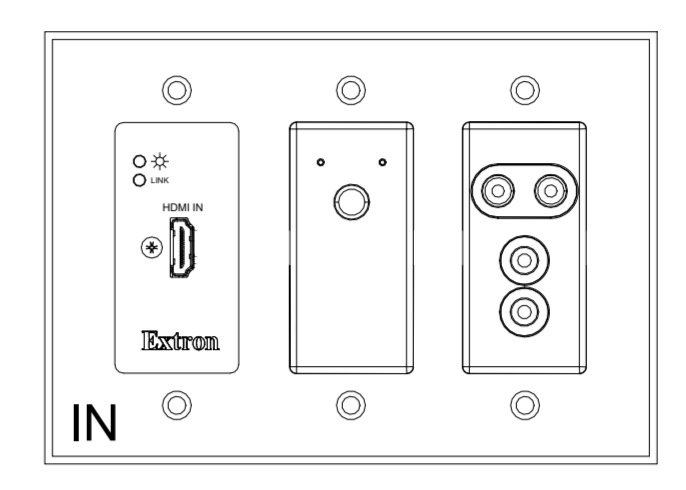
1 AUDIOVISUAL PLATE DETAIL - AV-A
 6" = 1'-0"



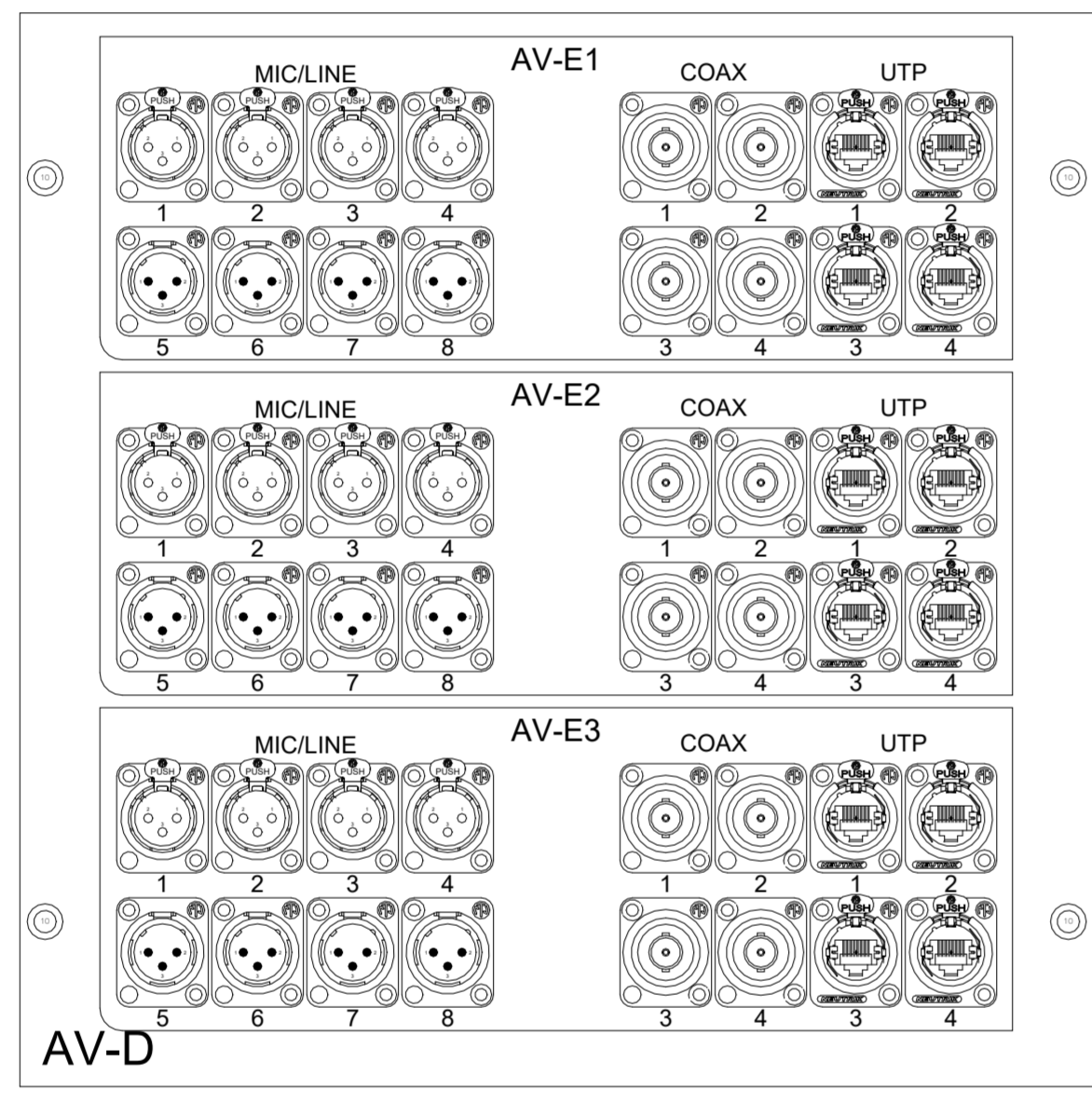
2 AUDIOVISUAL PLATE DETAIL - AV-B
 6" = 1'-0"



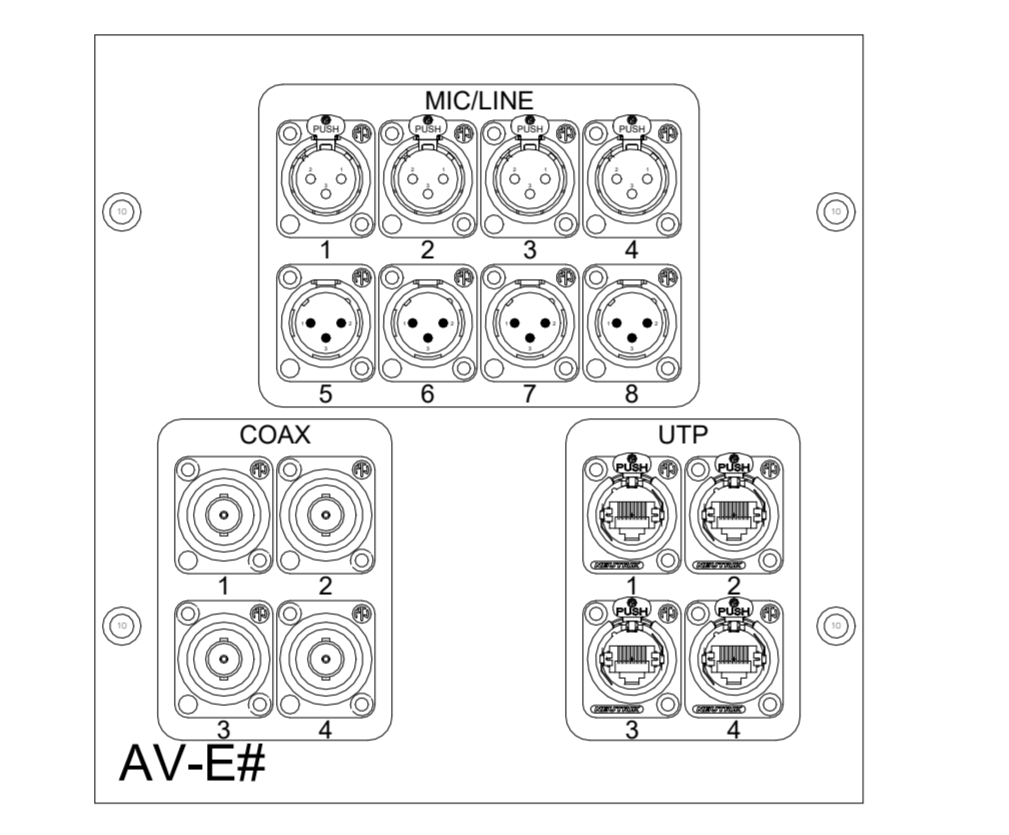
3 AUDIOVISUAL PLATE DETAIL - AV-C
 6" = 1'-0"



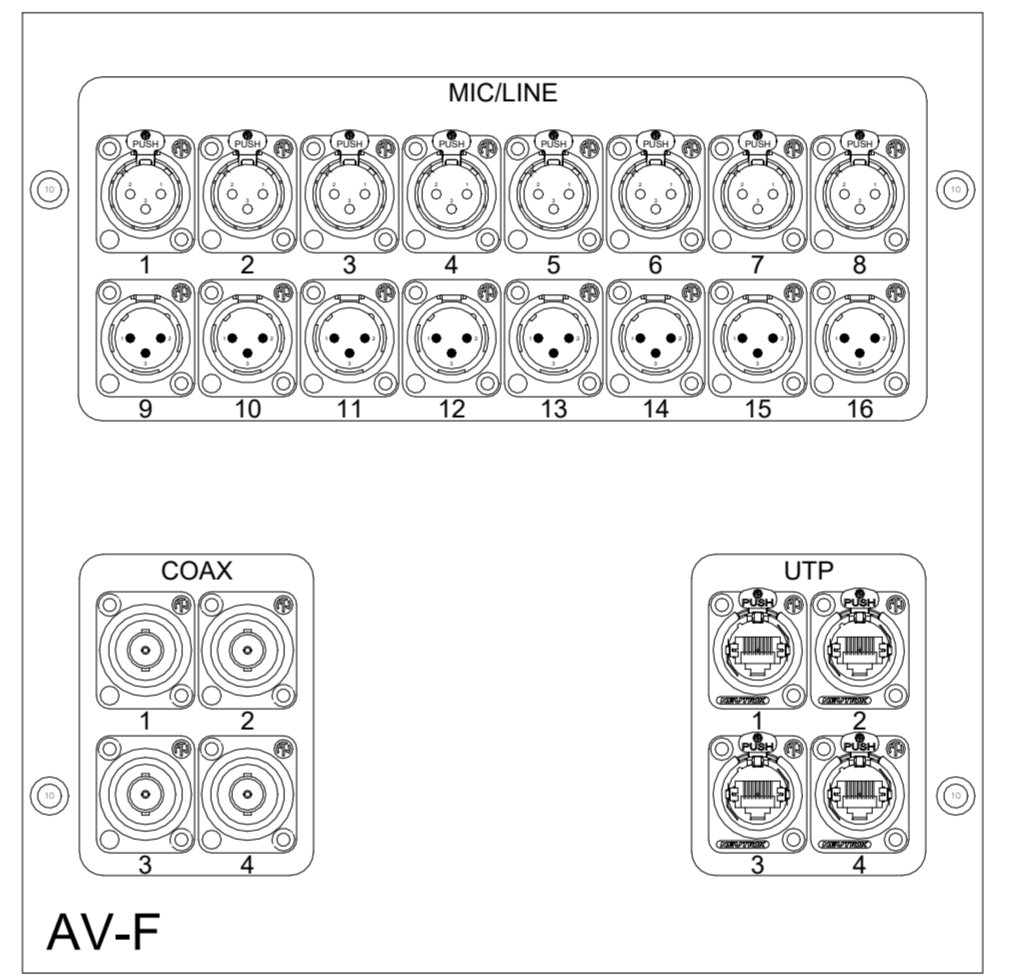
4 AUDIOVISUAL PLATE DETAIL - IN
 6" = 1'-0"



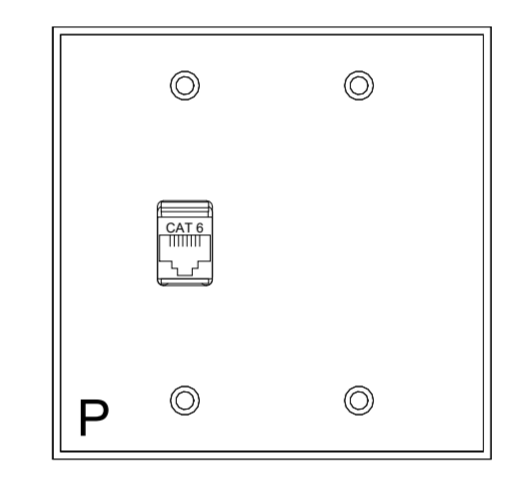
5 AUDIOVISUAL PLATE DETAIL - AV-D
 6" = 1'-0"



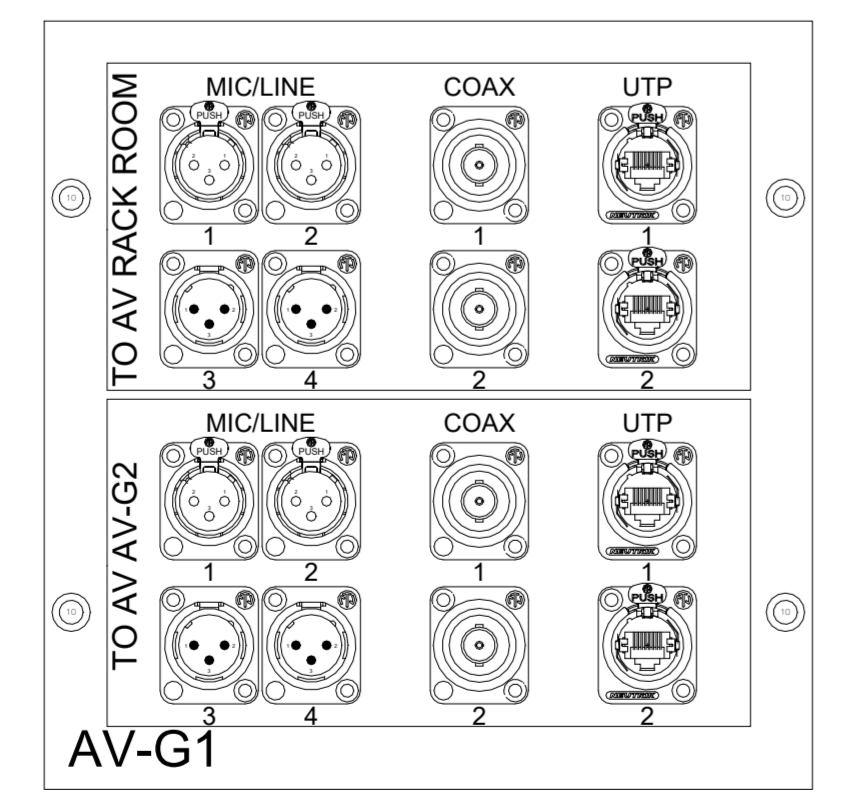
6 AUDIOVISUAL PLATE DETAIL - AV-E
 6" = 1'-0"



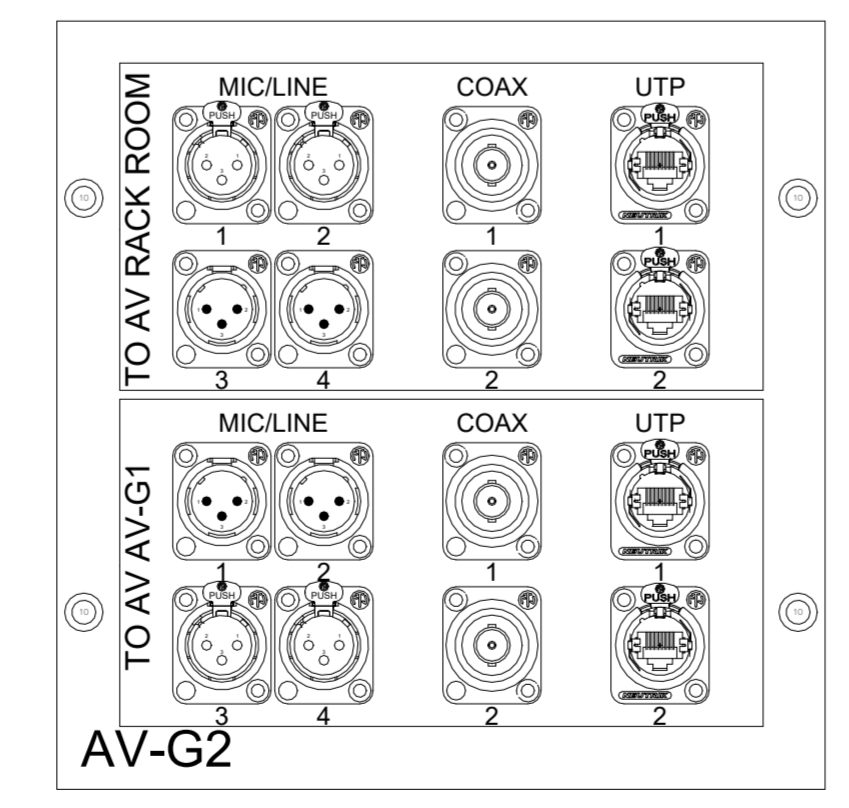
7 AUDIOVISUAL PLATE DETAIL - AV-F
 6" = 1'-0"



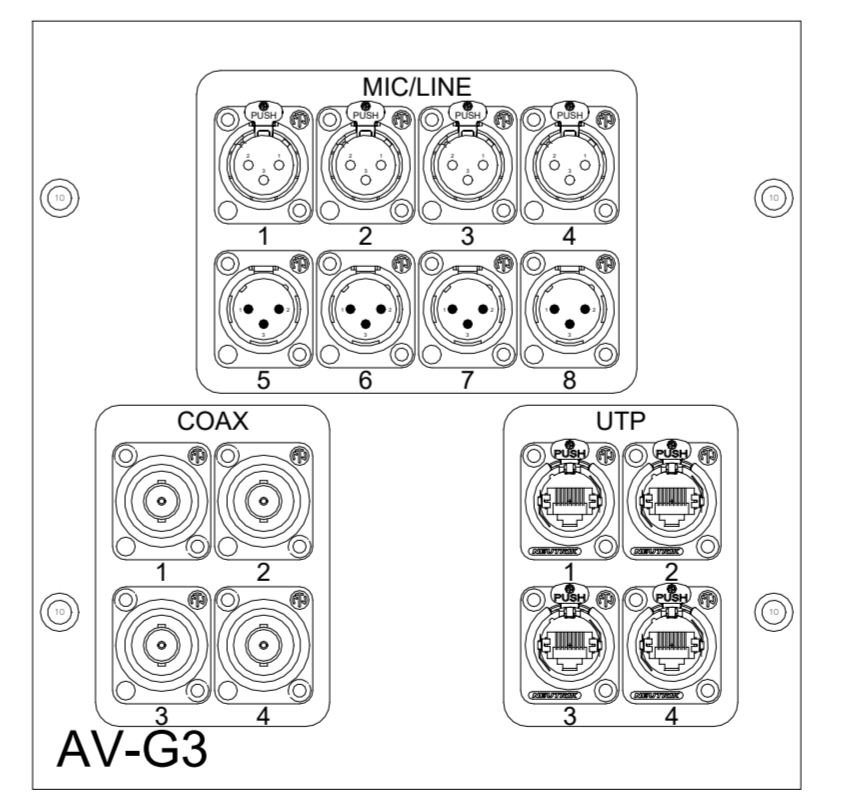
8 AUDIOVISUAL PLATE DETAIL - P
 6" = 1'-0"



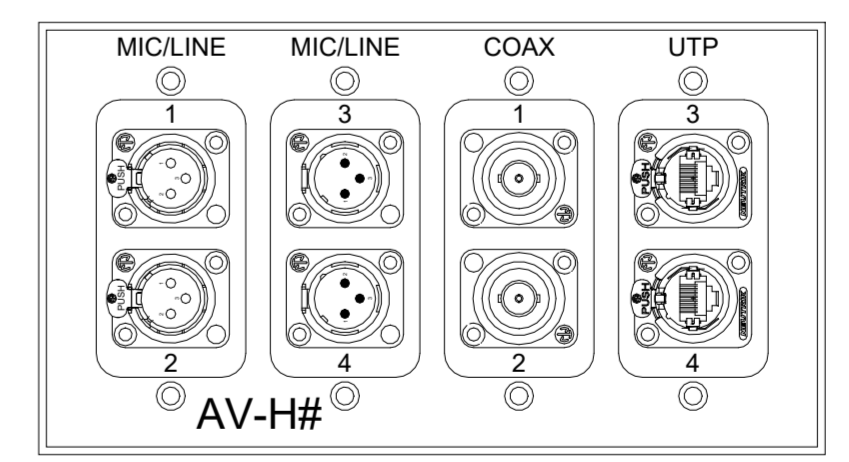
9 AUDIOVISUAL PLATE DETAIL - AV-G1
 6" = 1'-0"



10 AUDIOVISUAL PLATE DETAIL - AV-G2
 6" = 1'-0"



11 AUDIOVISUAL PLATE DETAIL - AV-G3
 6" = 1'-0"



12 AUDIOVISUAL PLATE DETAIL - AV-H
 6" = 1'-0"

**HARTFORD PUBLIC LIBRARY
 INTERIOR RENOVATIONS
 500 MAIN STREET
 HARTFORD CT 06103**

PHASE 4
 CONFORMED SET

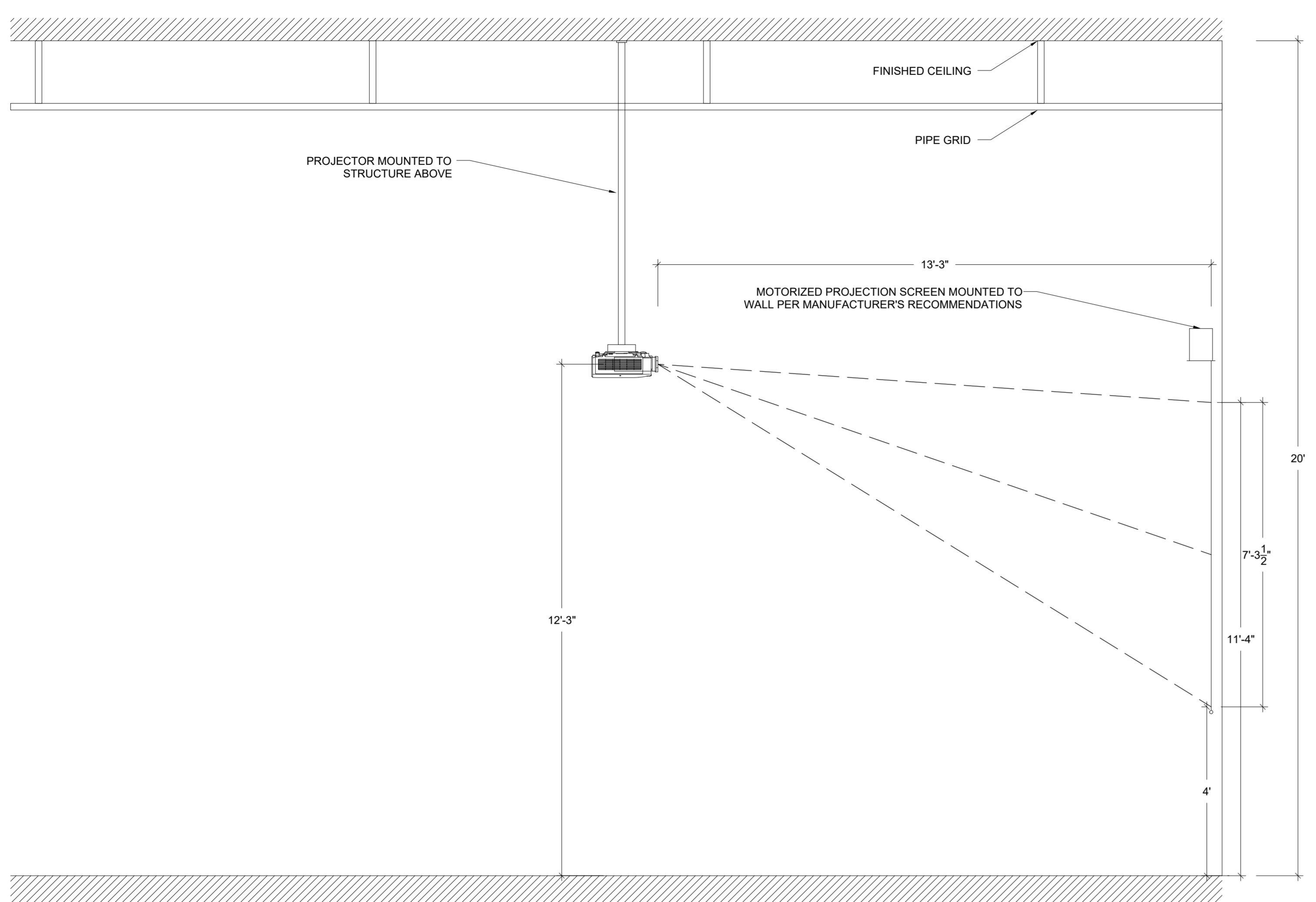


DRAWING TITLE
**AUDIOVISUAL DETAILS -
 PHASE 4**

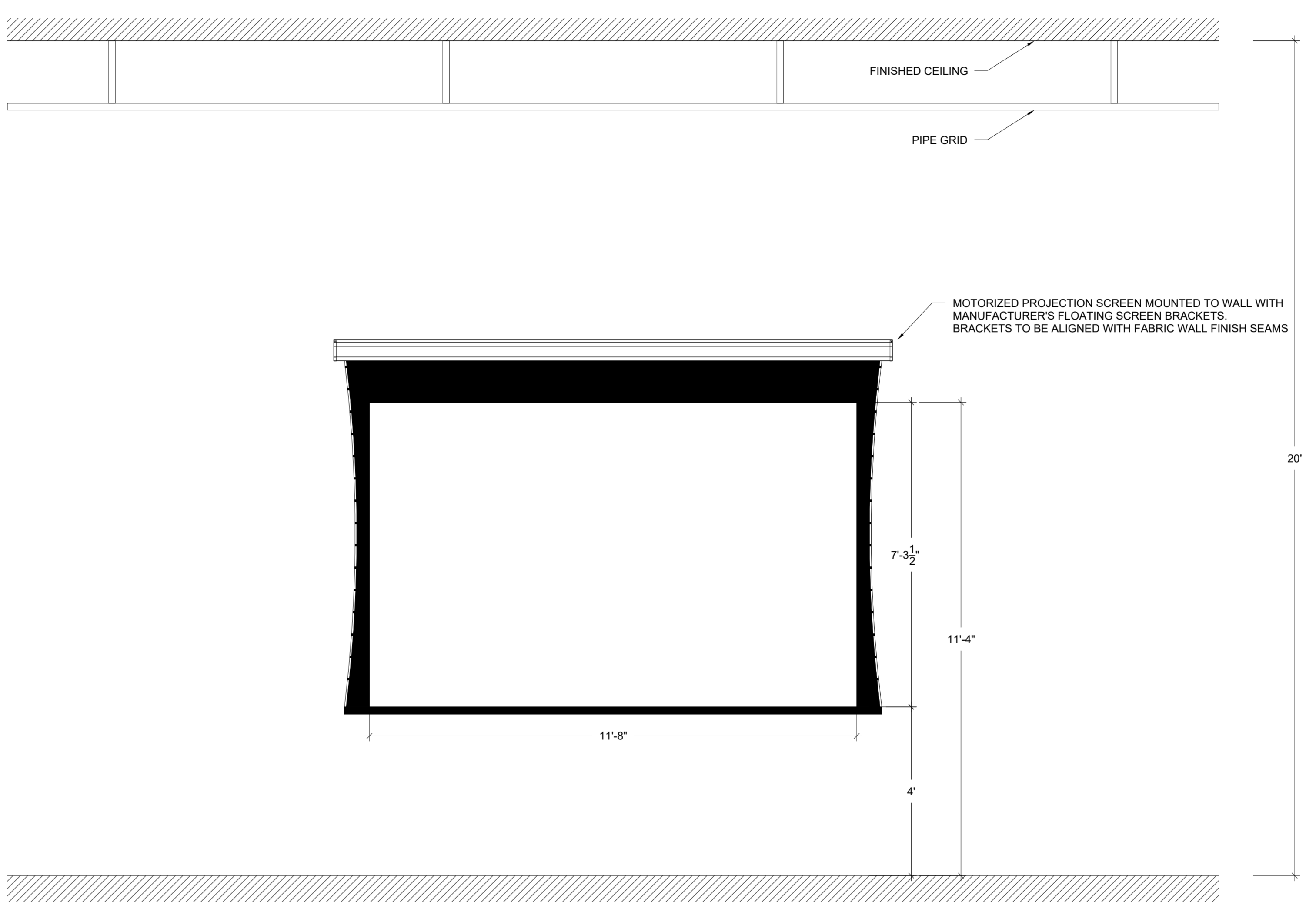
STATE PROJ. NO.	
PROJ. NO.	221303
SCALE	As indicated
DATE	05/19/2025
DRAWN BY	SW
APPROVED BY	MM

ISSUE DATES		
NO.	DATE	PURPOSE

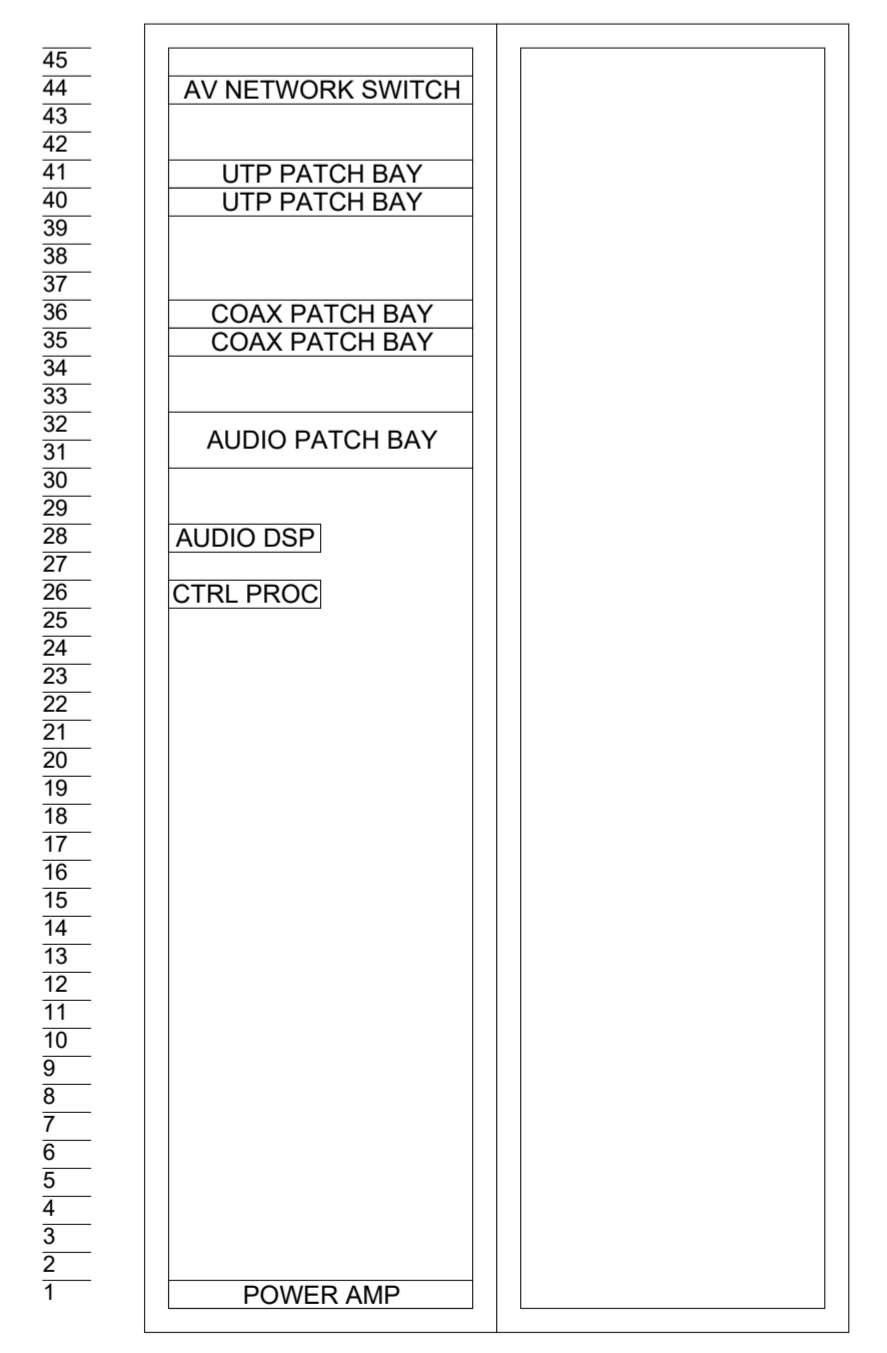
**AV-4.02
 P4**



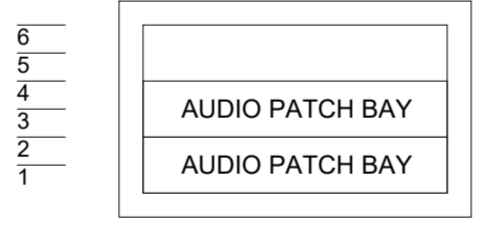
① FLEX EVENT SPACE PROJECTION SYSTEM SECTION
 1/2" = 1'-0"



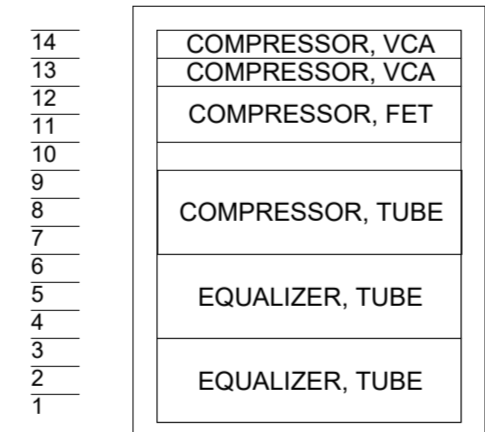
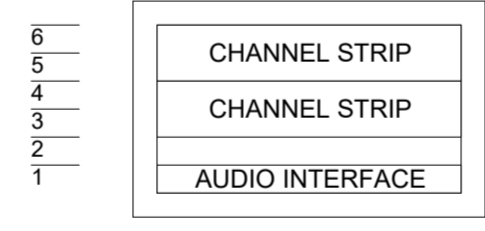
② FLEX EVENT SPACE PROJECTION SYSTEM ELEVATION
 1/2" = 1'-0"

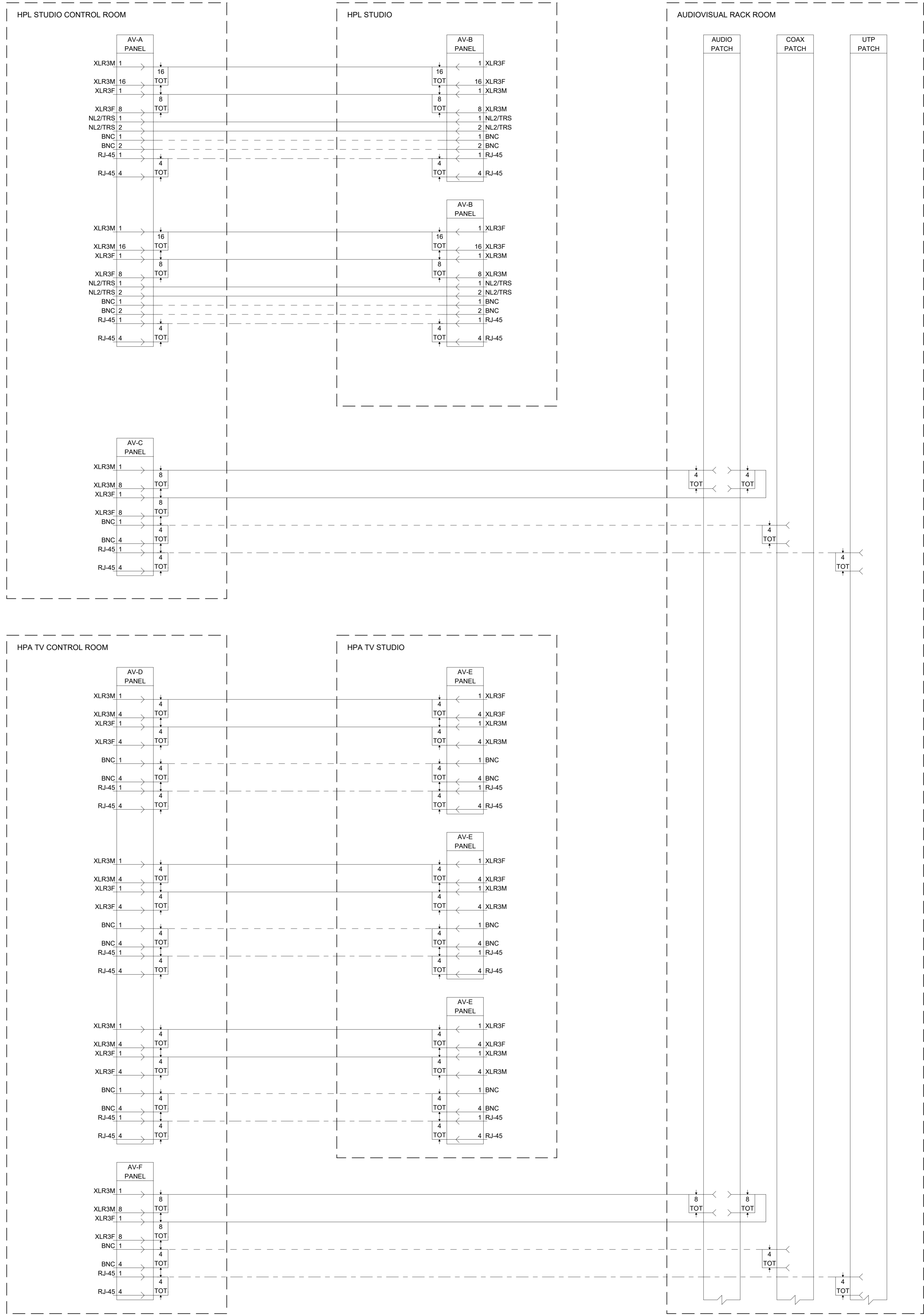


③ AUDIOVISUAL RACK ROOM RACK ELEVATION
 1" = 1'-0"



④ HPL STUDIO RACK ELEVATION
 1" = 1'-0"





GENERAL NOTES:

- FUNCTIONAL DIAGRAMS ARE FOR INFORMATION ONLY. DIAGRAMS CONVEY DESIGN INTENT FOR SIGNAL INTERCONNECTIONS BETWEEN EQUIPMENT INFRASTRUCTURE, ETC.
- SIGNAL FLOWS LEFT TO RIGHT, UON. BI-DIRECTIONAL SIGNALS EXCLUDED.
- INTERSECTING LINES DO NOT IMPLY SIGNAL SPLITS, BUSSING, OR OTHERWISE UNLESS NOTED WITH A 'DOT'
- CONNECTIONS TO EQUIPMENT ARE SPECIFIED BY SIGNAL TYPE, WHERE CABLE OR CONNECTOR INFORMATION IS EXCLUDED. REFER TO SPECIFICATIONS AND VERIFY WITH MANUFACTURER REQUIREMENTS.
- FIBER CABLE QUANTITIES REFER TO INDIVIDUAL STRANDS
- REFER TO SPECIFICATIONS FOR REQUIREMENTS FOR CABLE CONTAINMENT

SIGNAL LEGEND:

70V	HIGH VOLTAGE
AES3	LOUDSPEAKER LEVEL AUDIO
AES3ID	AES DIGITAL AUDIO, BALANCED
COMP	UNBALANCED COMPOSITE VIDEO
DVI-D	DIGITAL DVI VIDEO
GPIO	DIGITAL CONTROL
HD-SDI	150Mbps SDI VIDEO
HDMI	HDMI DIGITAL VIDEO WITH HDCP
IR	IR CONTROL
US	HIGH CURRENT
LAN	LOUDSPEAKER LEVEL AUDIO IP / ETHERNET LOCAL NETWORK
LINE	LINE LEVEL AUDIO
MIC	MICROPHONE LEVEL AUDIO
PROP	MANUFACTURER'S PROPRIETARY SIGNAL
RELAY/CC	CONTACT CLOSURE FOR RELAY CONTROL
RGBHV	RGB COMPONENT VIDEO W/ SYNC
RS-232	RS-232 SERIAL CONTROL
VGA	RGBHV WITH DATA VIDEO
Y/Pb/Pr	COMPONENT VIDEO
Y/C	S-VIDEO

SIGNAL / CABLE LEGEND:

AUDIO	—————
VIDEO	-----
CONTROL	- - - - -
TIE

**HARTFORD PUBLIC LIBRARY
 INTERIOR RENOVATIONS
 500 MAIN STREET
 HARTFORD CT 06103**

PHASE 4
CONFORMED SET



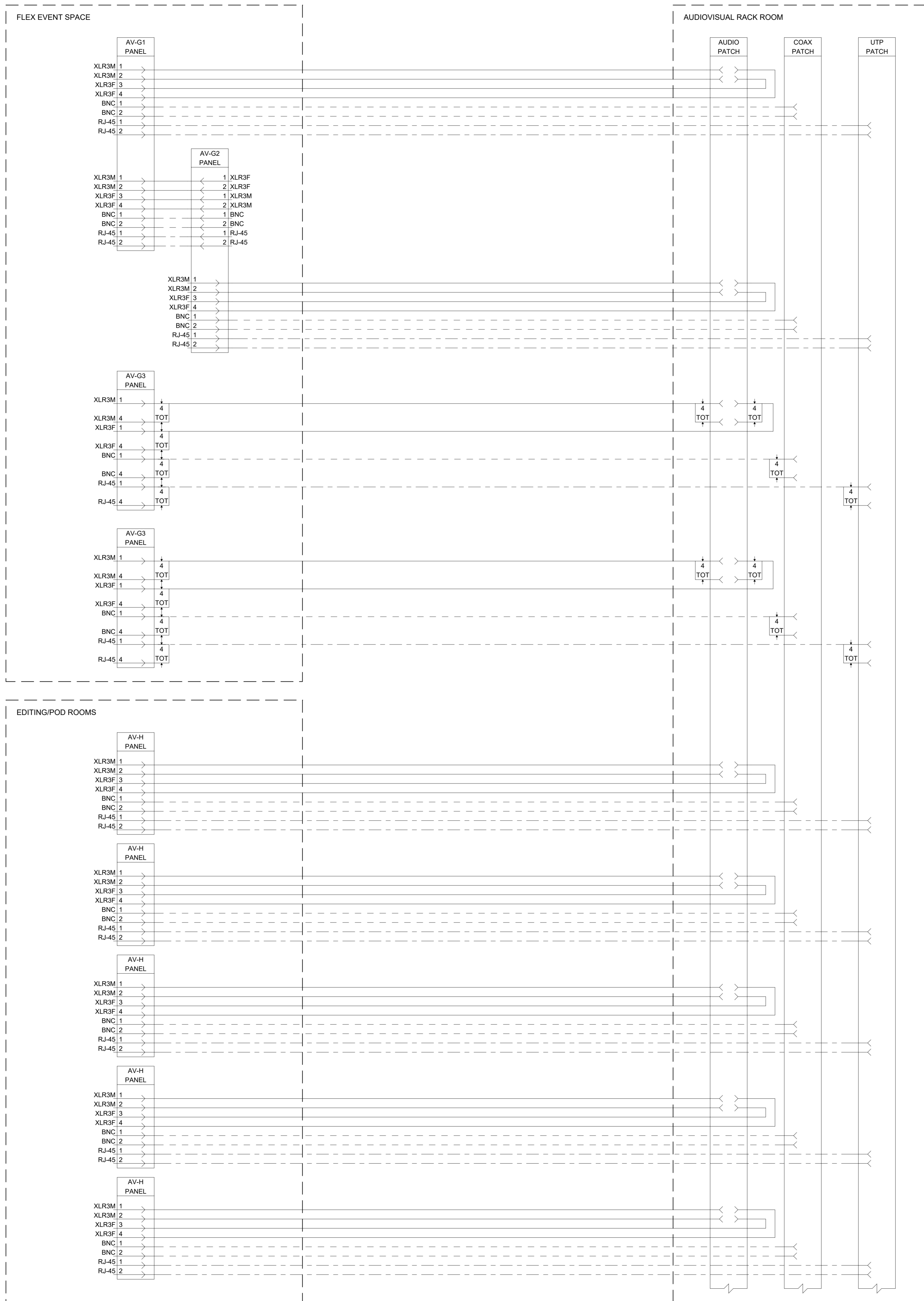
DRAWING TITLE
**AUDIOVISUAL
 FUNCTIONAL DIAGRAMS -
 PHASE 4**

STATE PROJ. NO.	
PROJ. NO.	221303
SCALE	12" = 1'-0"
DATE	05/19/2025
DRAWN BY	SW
APPROVED BY	MM

ISSUE DATES		
NO.	DATE	PURPOSE

**AV-9.01
 P4**

1 AUDIOVISUAL FUNCTIONAL DIAGRAM - TIE LINE SYSTEM, HPL STUDIO AND HPA TV STUDIO
 12" = 1'-0"



- GENERAL NOTES:**
- FUNCTIONAL DIAGRAMS ARE FOR INFORMATION ONLY. DIAGRAMS CONVEY DESIGN INTENT FOR SIGNAL INTERCONNECTIONS BETWEEN EQUIPMENT, INFRASTRUCTURE, ETC.
 - SIGNAL FLOWS LEFT TO RIGHT, UON. BI-DIRECTIONAL SIGNALS EXCLUDED.
 - INTERSECTING LINES DO NOT IMPLY SIGNAL SPLITS, BUSSING, OR OTHERWISE UNLESS NOTED WITH A "DOT"
 - CONNECTIONS TO EQUIPMENT ARE SPECIFIED BY SIGNAL TYPE WHERE CABLE OR CONNECTOR INFORMATION IS EXCLUDED. REFER TO SPECIFICATIONS AND VERIFY WITH MANUFACTURER REQUIREMENTS
 - FIBER CABLE QUANTITIES REFER TO INDIVIDUAL STRANDS
 - REFER TO SPECIFICATIONS FOR REQUIREMENTS FOR CABLE CONTAINMENT
- SIGNAL LEGEND:**
- | | |
|----------|---|
| 70V | HIGH VOLTAGE |
| AES3 | LOUDSPEAKER LEVEL AUDIO |
| AES3D | AES DIGITAL AUDIO, BALANCED |
| COMP | UNBALANCED AES DIGITAL AUDIO, COMPOSITE VIDEO |
| DVI-D | DIGITAL DVI VIDEO |
| GPIO | DIGITAL CONTROL |
| HD-SDI | 1.5Gbps SDI VIDEO |
| HDMI | HDMI DIGITAL VIDEO WITH HDCP |
| IR | IR CONTROL |
| US | HIGH CURRENT |
| LAN | LOUDSPEAKER LEVEL AUDIO IP / ETHERNET LOCAL NETWORK |
| LINE | LINE LEVEL AUDIO |
| MIC | MICROPHONE LEVEL AUDIO |
| PROP | MANUFACTURER'S PROPRIETARY SIGNAL |
| RELAY/CC | CONTACT CLOSURE FOR RELAY CONTROL |
| RGBHV | RGB COMPONENT VIDEO W/ SYNC |
| RS-232 | RS-232 SERIAL CONTROL |
| VGA | RGBHV WITH DATA VIDEO |
| Y/Pb/Pr | COMPONENT VIDEO |
| Y/C | S-VIDEO |
- SIGNAL / CABLE LEGEND:**
- | | |
|---------|-----------|
| AUDIO | ————— |
| VIDEO | - - - - - |
| CONTROL | · · · · · |
| TIE | · · · · · |

**HARTFORD PUBLIC LIBRARY
 INTERIOR RENOVATIONS
 500 MAIN STREET
 HARTFORD CT 06103**

PHASE 4
 CONFORMED SET



DRAWING TITLE
**AUDIOVISUAL
 FUNCTIONAL DIAGRAMS -
 PHASE 4**

STATE PROJ. NO.	
PROJ. NO.	221303
SCALE	12" = 1'-0"
DATE	05/19/2025
DRAWN BY	SW
APPROVED BY	MM

ISSUE DATES		
NO.	DATE	PURPOSE

**AV-9.02
 P4**

5/15/2025 2:19:20 PM C:\Users\SamVesvortell\STN_Consultants\STN\Internal\02 Drawings\Audiovisual\Revit\HPL_AV_LSTN_2022.rvt

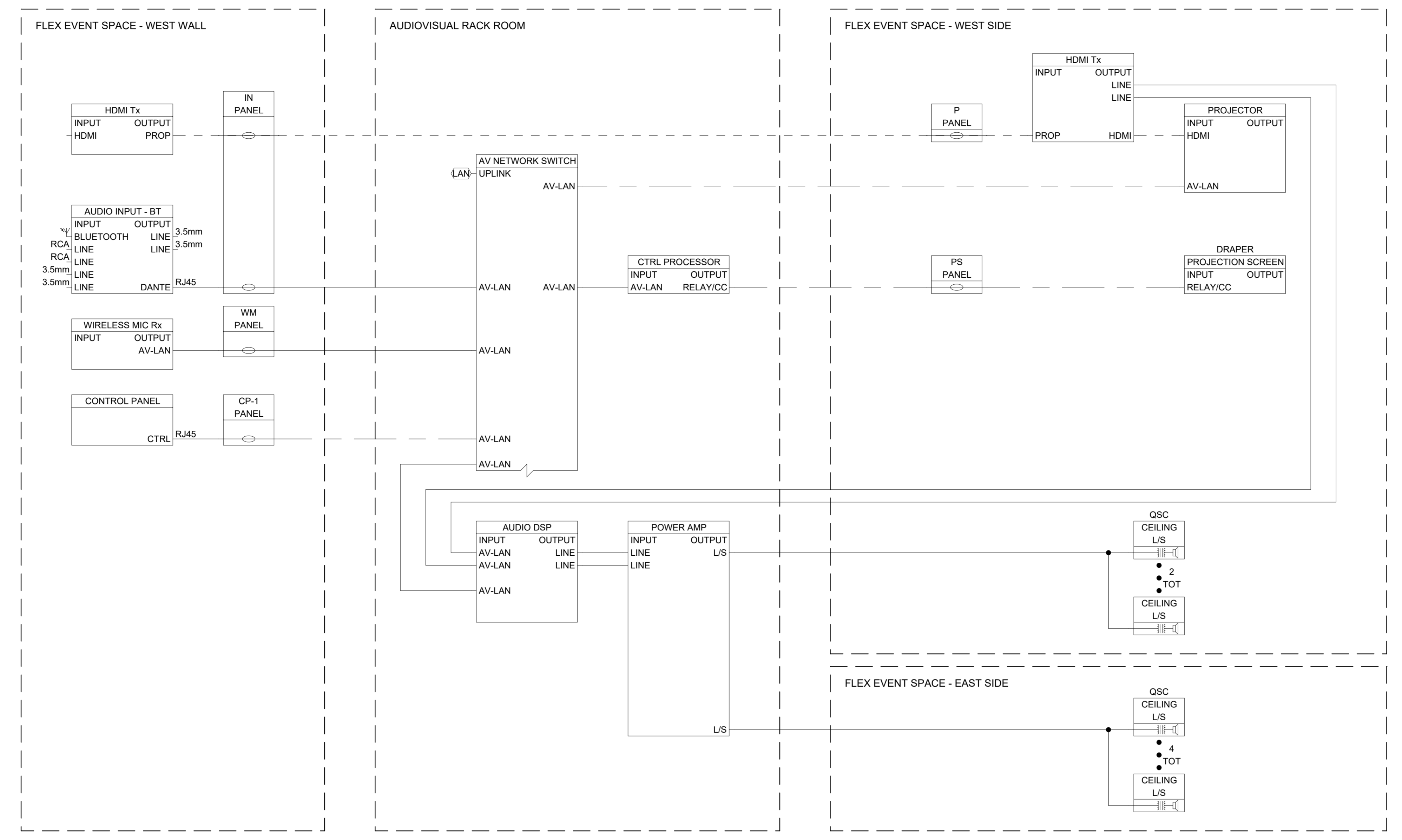
1 AUDIOVISUAL FUNCTIONAL DIAGRAM - TIE LINE SYSTEM, FLEX EVENT SPACE, EDITING, PRODUCTION POD
 12" = 1'-0"



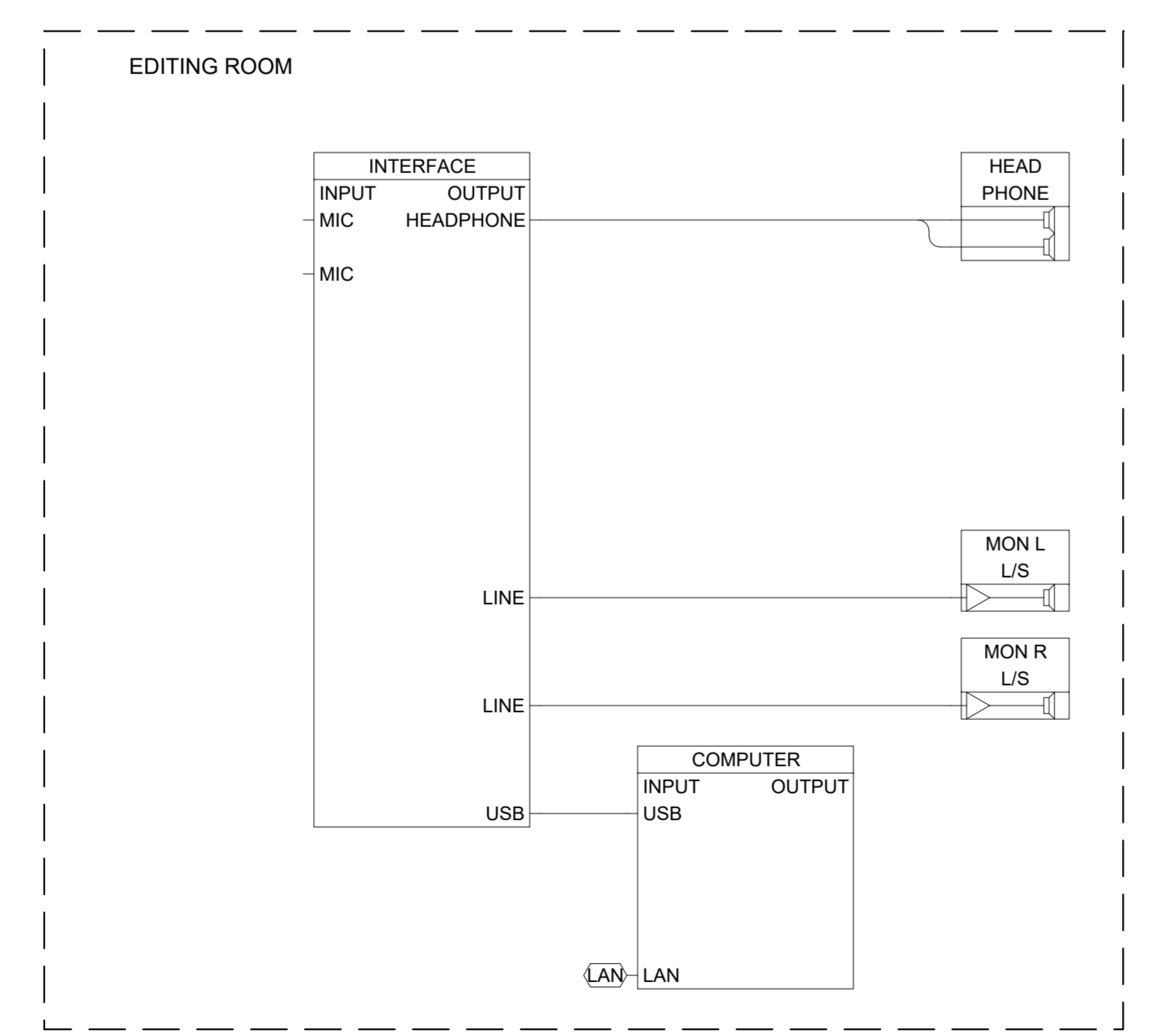
STATE PROJ. NO.	
PROJ. NO.	221303
SCALE	12" = 1'-0"
DATE	05/19/2025
DRAWN BY	SW
APPROVED BY	MM

ISSUE DATES		
NO.	DATE	PURPOSE

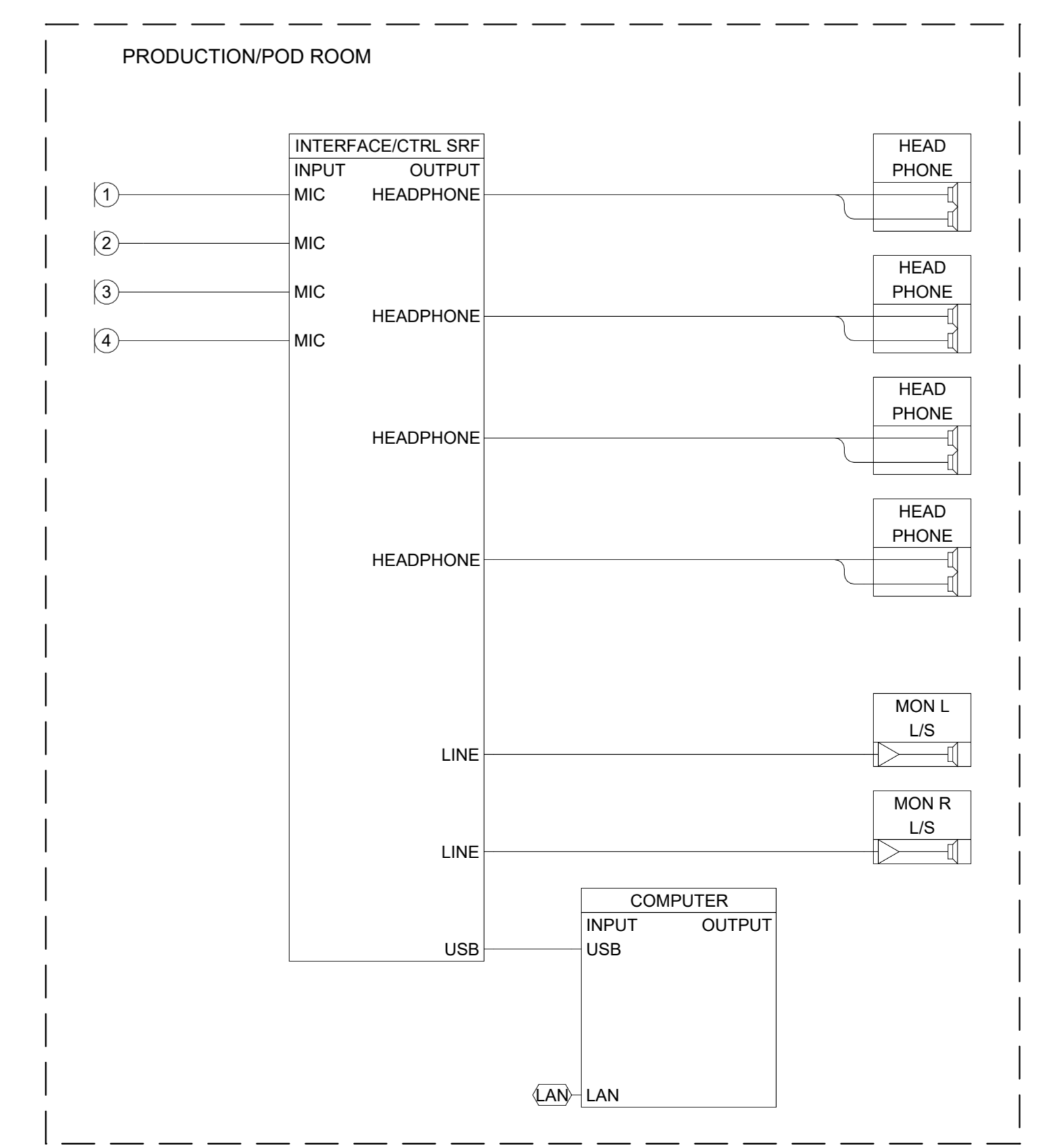
- GENERAL NOTES:**
- FUNCTIONAL DIAGRAMS ARE FOR INFORMATION ONLY. DIAGRAMS CONVEY DESIGN INTENT FOR SIGNAL INTERCONNECTIONS BETWEEN EQUIPMENT INFRASTRUCTURE, ETC.
 - SIGNAL FLOWS LEFT TO RIGHT, UON. BI-DIRECTIONAL SIGNALS EXCLUDED.
 - INTERSECTING LINES DO NOT IMPLY SIGNAL SPLITS, BUSSING, OR OTHERWISE UNLESS NOTED WITH A "DOT"
 - CONNECTIONS TO EQUIPMENT ARE SPECIFIED BY SIGNAL TYPE, WHERE CABLE OR CONNECTOR INFORMATION IS EXCLUDED. REFER TO SPECIFICATIONS AND VERIFY WITH MANUFACTURER REQUIREMENTS
 - FIBER CABLE QUANTITIES REFER TO INDIVIDUAL STRANDS
 - REFER TO SPECIFICATIONS FOR REQUIREMENTS FOR CABLE CONTAINMENT
- SIGNAL LEGEND:**
- 70V HIGH VOLTAGE
 - AES3 AES DIGITAL AUDIO, BALANCED
 - AES3ID UNBALANCED AES DIGITAL AUDIO
 - COMP COMPOSITE VIDEO
 - DVI-D DIGITAL DVI VIDEO
 - GPIO DIGITAL CONTROL
 - HD-SDI 1.5Gbps SDI VIDEO
 - HDMI HDMI DIGITAL VIDEO WITH HDCP
 - IR IR CONTROL
 - L/S HIGH CURRENT
 - LAN LOUDSPEAKER LEVEL AUDIO
 - IP / ETHERNET LOCAL NETWORK
 - LINE LINE LEVEL AUDIO
 - MIC MICROPHONE LEVEL AUDIO
 - MANUFACTURER'S PROPRIETARY SIGNAL
 - RELAY/CC CONTACT CLOSURE FOR RELAY CONTROL
 - RGBHV RGB COMPONENT VIDEO W/ SYNC
 - RS-232 RS-232 SERIAL CONTROL
 - VGA RGBHV WITH DATA VIDEO
 - Y/Pb/Pr COMPONENT VIDEO
 - Y/C S-VIDEO
- SIGNAL / CABLE LEGEND:**
- AUDIO - - - - -
 - VIDEO - - - - -
 - CONTROL - - - - -
 - TIE - - - - -



1 AUDIOVISUAL FUNCTIONAL DIAGRAM - FLEX EVENT SPACE PRESENTATION SYSTEM
 12" = 1'-0"



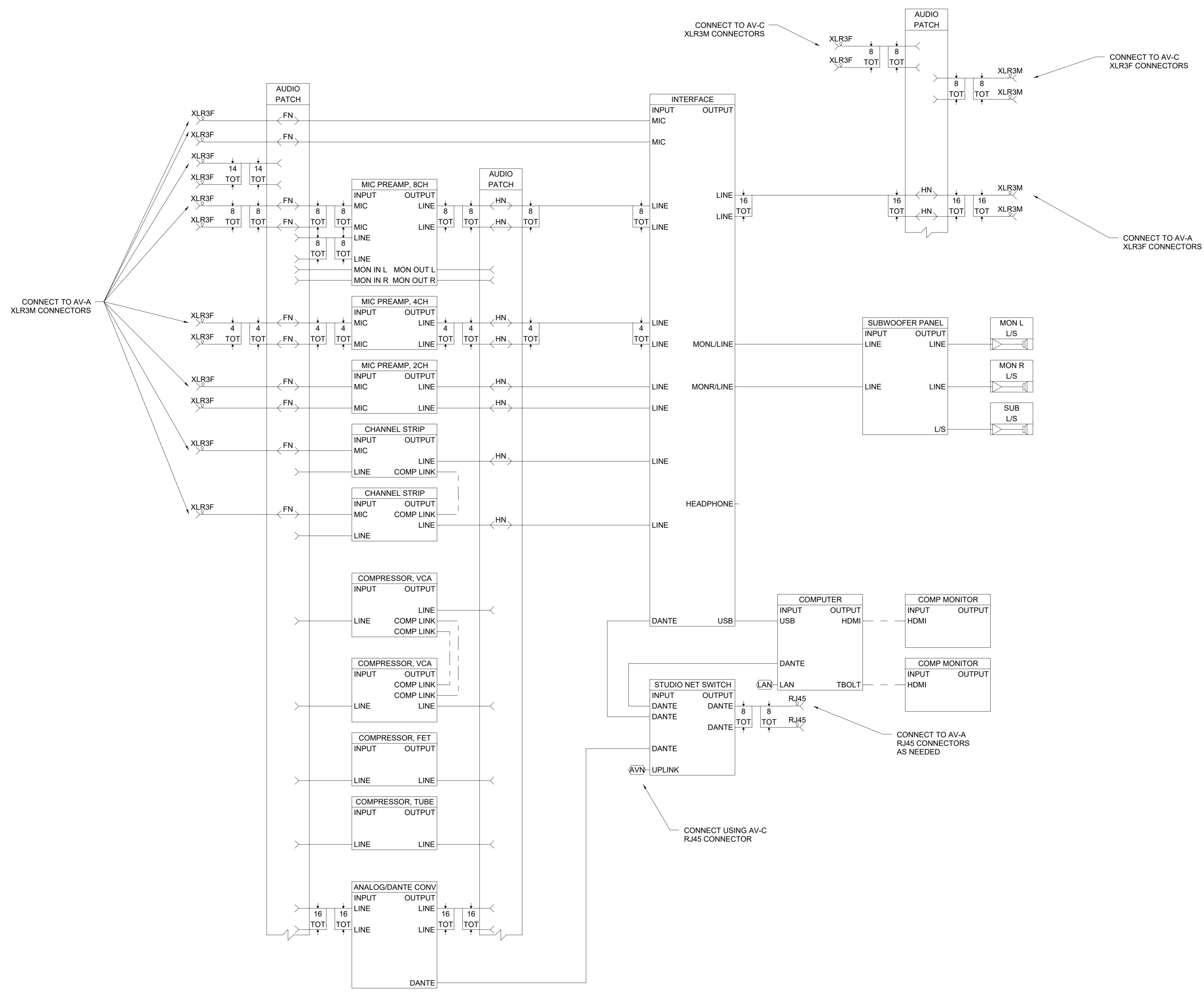
2 AUDIOVISUAL FUNCTIONAL DIAGRAM - EDITING ROOM, TYP FOR (3)
 12" = 1'-0"



3 AUDIOVISUAL FUNCTIONAL DIAGRAM - PRODUCTION POD ROOM, TYP FOR (2)
 12" = 1'-0"

- GENERAL NOTES:**
- FUNCTIONAL DIAGRAMS ARE FOR INFORMATION ONLY. DIAGRAMS CONVEY DESIGN INTENT FOR SIGNAL INTERCONNECTIONS BETWEEN EQUIPMENT INFRASTRUCTURE, ETC.
 - SIGNAL FLOWS LEFT TO RIGHT, UON. BI-DIRECTIONAL SIGNALS EXCLUDED.
 - INTERSECTING LINES DO NOT IMPLY SIGNAL SPLITS, BUSSING, OR OTHERWISE UNLESS NOTED WITH A 'DOT'
 - CONNECTIONS TO EQUIPMENT ARE SPECIFIED BY SIGNAL TYPE. WHERE CABLE OR CONNECTOR INFORMATION IS EXCLUDED, REFER TO SPECIFICATIONS AND VERIFY WITH MANUFACTURER REQUIREMENTS
 - FIBER CABLE QUANTITIES REFER TO INDIVIDUAL STRANDS
 - REFER TO SPECIFICATIONS FOR REQUIREMENTS FOR CABLE CONTAINMENT

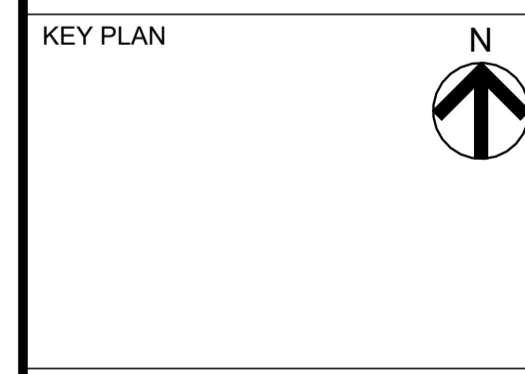
- SIGNAL LEGEND:**
- 70V HIGH VOLTAGE LOUDSPEAKER LEVEL AUDIO
 - AES3 AES DIGITAL AUDIO, BALANCED
 - AES3ID UNBALANCED AES DIGITAL AUDIO
 - COMP COMPOSITE VIDEO
 - DVI-D DIGITAL DVI VIDEO
 - GPIO DIGITAL CONTROL
 - HD-SDI 1.5Gbps SDI VIDEO
 - HDMI HDMI DIGITAL VIDEO WITH HDCP
 - IR IR CONTROL
 - L/S HIGH CURRENT LOUDSPEAKER LEVEL AUDIO
 - LAN IP / ETHERNET LOCAL NETWORK
 - LINE LINE LEVEL AUDIO
 - MIC MICROPHONE LEVEL AUDIO
 - PROP MANUFACTURER'S PROPRIETARY SIGNAL
 - RELAY/CC CONTACT CLOSURE FOR RELAY CONTROL
 - RGBHV RGB COMPONENT VIDEO W/ SYNC
 - RS-232 RS-232 SERIAL CONTROL
 - VGA RGBHV WITH DATA VIDEO
 - Y/Pb/Pr COMPONENT VIDEO
 - Y/C S-VIDEO
- SIGNAL / CABLE LEGEND:**
- AUDIO: Solid line
 - VIDEO: Dashed line
 - CONTROL: Dotted line
 - TIE: Long dashed line



1 AUDIOVISUAL FUNCTIONAL DIAGRAM - HPL STUDIO AUDIO PRODUCTION SYSTEM
 12" = 1'-0"

**HARTFORD PUBLIC LIBRARY
 INTERIOR RENOVATIONS
 500 MAIN STREET
 HARTFORD CT 06103**

PHASE 4
 CONFORMED SET



DRAWING TITLE
 AUDIOVISUAL
 FUNCTIONAL DIAGRAMS -
 PHASE 4

STATE PROJ. NO.	
PROJ. NO.	221303
SCALE	12" = 1'-0"
DATE	05/19/2025
DRAWN BY	SW
APPROVED BY	MM

ISSUE DATES		
NO.	DATE	PURPOSE

**AV-9.04
 P4**