

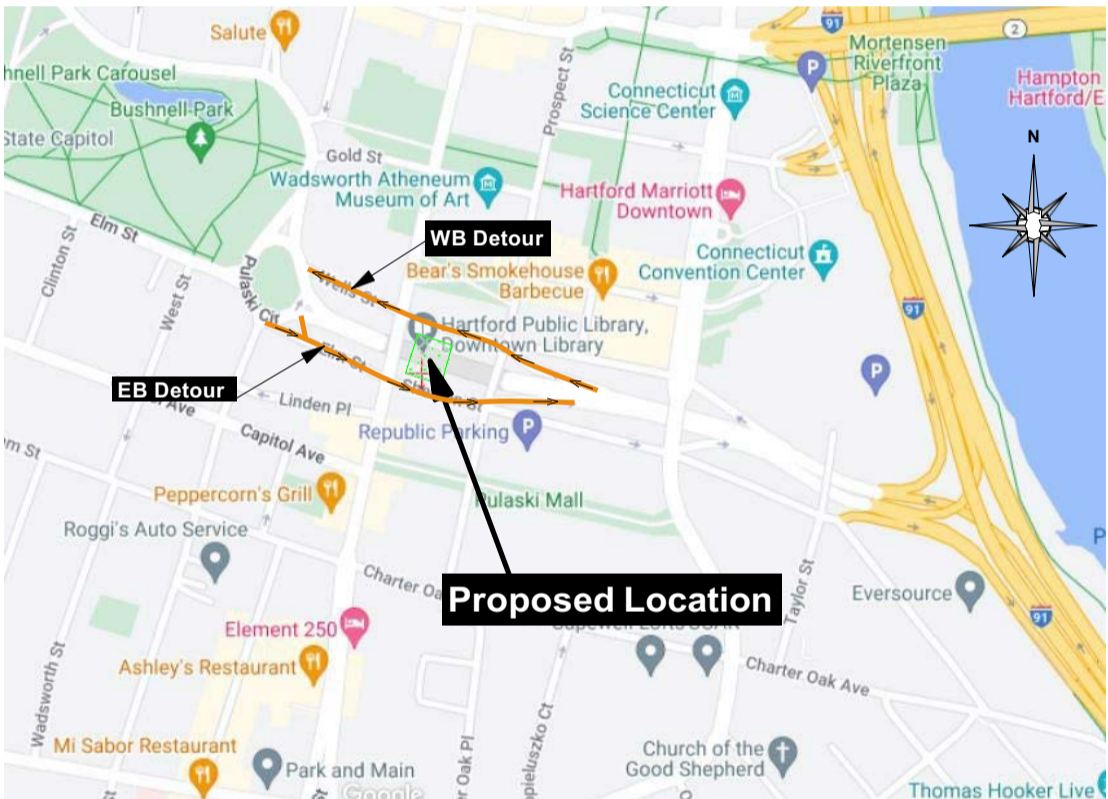
AWP Safety

Temporary Traffic Control Plan

169279 - Whitehead Highway Detour - Hartford, CT
Prepared for TSKP Studio

Table of Contents

| Name | Number |
|--|--------|
| Temporary Traffic Control Plan Sheets: | 1-4 |



Project: TSKP Studio - 169279 - Whitehead Highway Detour - Hartford, CT
Comments:
All signs & devices shall be placed in accordance with the latest provisions of the Connecticut Department of Transportation (ConnDOT) 0971001A Traffic Control Typicals Manual with respect to any applicable provisions from the & City of Hartford.

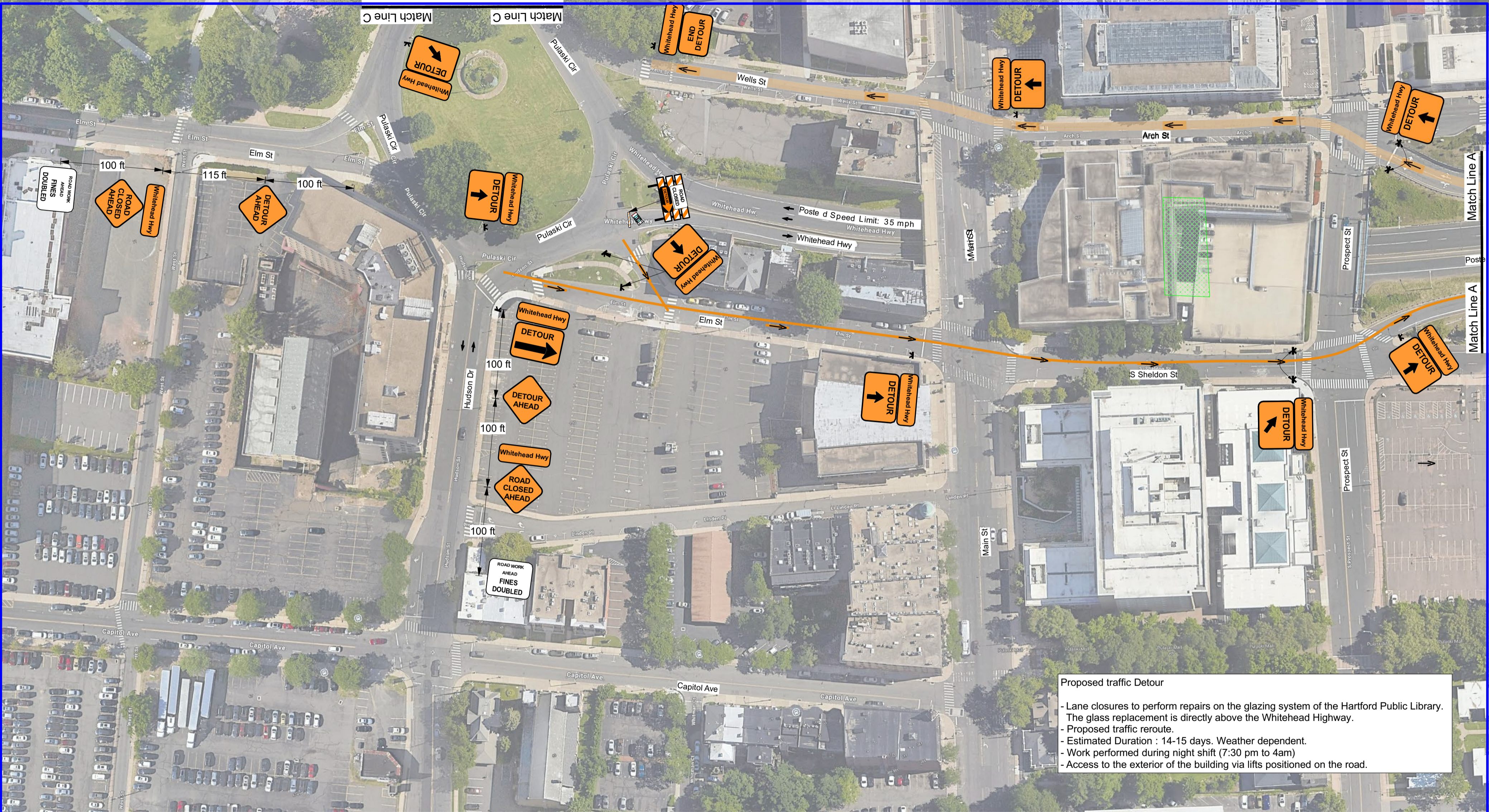
Access to residential and commercial driveways to be maintained at all times.
Parking ban shall be coordinated with the Hartford Police Department.

Date: 8/11/2025
Author: M. Moyer
TTCP: 17253



Digitally signed by Albert S. Antoine PE
Date: 2025.08.13 14:30:19 -04'00'

Reviewed and Sealed by:
Albert S. Antoine, PE
Orange Barrel Engineers, Inc
1469 North Magnolia Avenue, Suite B
Ocala, FL 34475



Proposed traffic Detour

- Lane closures to perform repairs on the glazing system of the Hartford Public Library. The glass replacement is directly above the Whitehead Highway.
- Proposed traffic reroute.
- Estimated Duration : 14-15 days. Weather dependent.
- Work performed during night shift (7:30 pm to 4am)
- Access to the exterior of the building via lifts positioned on the road.



1(800)-343-2650
www.awpsafety.com

Project: TSKP Studio - 169279 - Whitehead Highway Detour - Hartford, CT

Comments:
All signs & devices shall be placed in accordance with the latest provisions of the Connecticut Department of Transportation (ConnDOT) 0971001A Traffic Control Typicals Manual with respect to any applicable provisions from the & City of Hartford.

Access to residential and commercial driveways to be maintained at all times.
Parking ban shall be coordinated with the Hartford Police Department.




Date: 8/11/2025
Author: M. Moyer
TTCP: 17253
Notes:
-Sign spacing may be adjusted to fit field conditions.



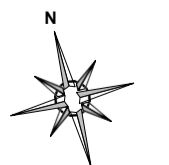
Combined Detours

Digitally signed by Albert S. Antoine, PE
Date: 2025.08.13 14:30:32 -0400

Reviewed and Sealed by:
Albert S. Antoine, PE
Orange Barrel Engineers, Inc
1469 North Magnolia Avenue, Suite B
Ocala, FL 34475

| Legend | |
|---|-------------------------|
|  | Portable Sign Stand |
|  | Detour Direction |
|  | Type III Barricade |
|  | Work Area |
|  | Law Enforcement Vehicle |

PLANS ARE NOT TO SCALE



Sheet 1 of 4



1(800)-343-2650
www.awpsafety.com

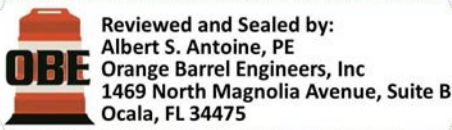
Project: TSKP Studio - 169279 - Whitehead Highway Detour - Hartford, CT
Comments:
All signs & devices shall be placed in accordance with the latest provisions of the Connecticut Department of Transportation (ConnDOT) 0971001A Traffic Control Typicals Manual with respect to any applicable provisions from the & City of Hartford.

Access to residential and commercial driveways to be maintained at all times.
Parking ban shall be coordinated with the Hartford Police Department.

Date: 8/11/2025
Author: M. Moyer
TTCP: 17253
Notes:
-Sign spacing may be adjusted to fit field conditions.



Combined Detours
Digitally signed by Albert S. Antoine, PE
Date: 2025.08.13 14:30:41 -04'00'



- Legend**
- Portable Sign Stand
 - Detour Direction
 - Drum
 - Arrowboard
 - Type III Barricade
 - Law Enforcement Vehicle
 - TMA

PLANS ARE NOT TO SCALE

Sheet 2 of 4





AWP
Safety

1(800)-343-2650
www.awpsafety.com

Project: TSKP Studio - 169279 - Whitehead Highway Detour - Hartford, CT
Comments:
All signs & devices shall be placed in accordance with the latest provisions of the Connecticut Department of Transportation (ConnDOT) 0971001A Traffic Control Typicals Manual with respect to any applicable provisions from the & City of Hartford.

Access to residential and commercial driveways to be maintained at all times.
Parking ban shall be coordinated with the Hartford Police Department.

Date: 8/11/2025
Author: M. Moyer
TTCP: 17253
Notes:
-Sign spacing may be adjusted to fit field conditions.



Combined Detours

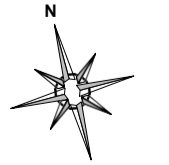
Digitally signed by Albert S. Antoine, PE
Date: 2025.08.13 14:30:50 -04'00'



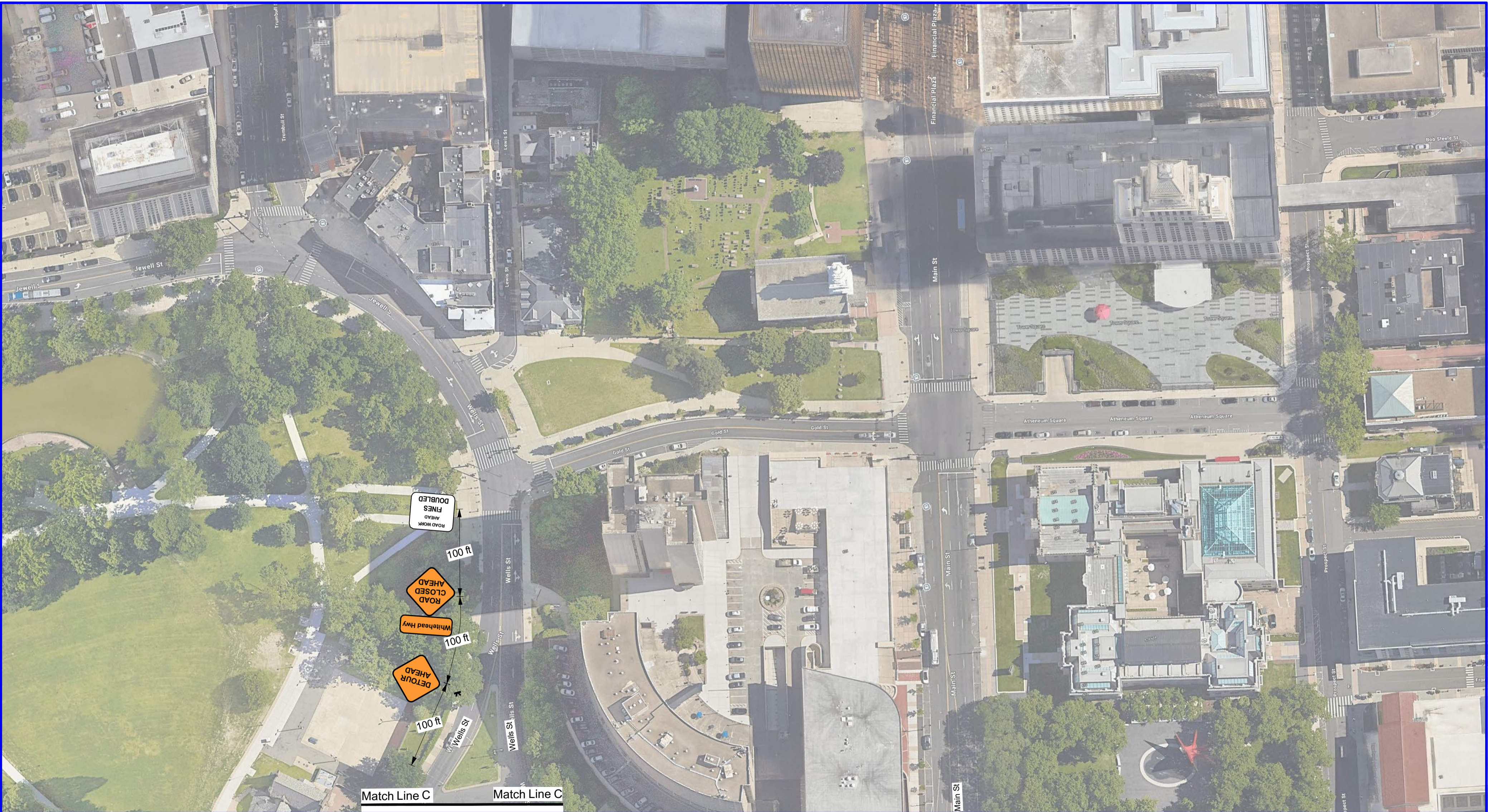
Reviewed and Sealed by:
Albert S. Antoine, PE
Orange Barrel Engineers, Inc
1469 North Magnolia Avenue, Suite B
Ocala, FL 34475

Legend
Portable Sign Stand

PLANS ARE NOT TO SCALE



Sheet 3 of 4



1(800)-343-2650
www.awpsafety.com

Project: TSKP Studio - 169279 - Whitehead Highway Detour - Hartford, CT
Comments:
All signs & devices shall be placed in accordance with the latest provisions of the Connecticut Department of Transportation (ConnDOT) 0971001A Traffic Control Typicals Manual with respect to any applicable provisions from the & City of Hartford.

Access to residential and commercial driveways to be maintained at all times.
Parking ban shall be coordinated with the Hartford Police Department.

Date: 8/11/2025
Author: M. Moyer
TTCP: 17253
Notes:
-Sign spacing may be adjusted to fit field conditions.



Combined Detours
Digitally signed by Albert S. Antoine PE
Date: 2025.08.13 14:31:02 -0400

Reviewed and Sealed by:
Albert S. Antoine, PE
Orange Barrel Engineers, Inc
1469 North Magnolia Avenue, Suite B
Ocala, FL 34475

| Legend | |
|--------|---------------------|
| | Portable Sign Stand |
| | Detour Direction |

| |
|------------------------|
| PLANS ARE NOT TO SCALE |
| |
| Sheet 4 of 4 |