

A place for learning.



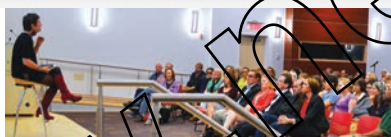
A place for transforming communities.



A place for the arts.



A place like no other.



# Our Mission

to provide free resources that inspire reading, guide learning, and encourage individual exploration.

www.hartfordpubliclibrary.org





## A Message from the Board President and the Chief Executive Officer

Hartford Public Library is a place for learning, a place for transforming communities, a place for the arts – a place like no other. You will see on the pages that follow an engaged community with a passion for learning and growing.

The Library has made our city stronger by providing free and open access to information and opportunity through our network of neighborhood libraries and the Downtown Library. Over the past year, building on its legacy, the Library has focused on its role as an active catalyst for literacy, learning, creativity, and as an agent of hope.

We are planning new library spaces for the future, a new role for the Downtown Library with the University of Connecticut, and strengthening our partnership with Hartford Public Schools. Together, these projects will transform lives and create boundless opportunities for our citizens, but so much more needs to be done. As a recent report by the Center for an Urban Future notes, a city's network of libraries is a powerful engine of individual and community empowerment. But to meet the growing needs of those we serve, a far greater investment from the City is necessary.

Within our libraries, we're also committed to expanding opportunities for our customers. We are improving and augmenting our services and spaces. For students, we're increasing access to after-school support (especially in the highly successful YOUmedia Hartford), and for adults, we're expanding our ESOL, GED, high school diploma and computer classes, and access to contemporary technology. And through our growing public programs and exhibitions, we are an essential cultural center.

Of course we are very fortunate to have citizens who love their Library! Equally important is a supportive Mayor and City Council, a committed Board of Directors, library leaders who push the envelope and challenge the status quo, generous donors and volunteers, and the best staff anywhere. We hope you'll continue to show your confidence in and loyalty to the Library as we strive to expand opportunities for even more people across the city.

All of you have helped us create a model for 21st century library service, one of the most respected in the nation. We are proud to be a place for people and for what we've accomplished. And our tradition of excellence will continue with a new Chief Executive Officer who we hope to announce in early 2016.

Onward to 2016.



**GREGORY C. DAVIS**  
*Interim President, Board of Directors*



**MATTHEW K. POLAND**  
*CEO, Hartford Public Library*

# A place for learning

Hartford Public Library is a place for learning, and not just through books. We host hundreds of classes, workshops and training opportunities at our ten locations every year. We also offer services that can help you learn a new skill, prepare you for the workforce, or get a high school diploma.



## ■ Leap Into Learning

As the community's primary center for free informal learning for people of all ages, HPL is building a collaborative early learning and literacy network for the City's youngest residents and their families.



## ■ YOUmedia

The coolest place in town for teens! YOUmedia is a 21st century digital learning and maker space for hanging around, trying new things, and pursuing personal passions to achieve academic and career success.



## ■ Career Online High School (COHS)

Earn an accredited high school diploma while gaining real-world career training through a flexible, supportive, online education program. Available by scholarship, COHS offers adults the opportunity to complete their high school education.



### ■ Summer Learning

Summer reading lists and programs are a thing of the past. Summer learning is about the discovery of the arts, science, technology, reading, and math. Summer learning is fun too.



### ■ HPS/HPL Partnership

Public schools and public libraries are a powerful combination. Together we help parents become more engaged in the academic success of their children. What could be better than that?



### ■ Citizenship

HPL holds citizenship classes and naturalization workshops to learn how to apply for U.S. citizenship, practice your English, learn American history for the citizenship test, or to put together the necessary documents, for government submissions.



## A place for learning



*“A library is the only single place you can go to learn something new, be comforted, terrified, thrilled, saddened, overjoyed, or excited all in one day. And for free.”*

**AMY NEFTZGER**

Author of *The Orphanage of Miracles*



### HOMAGO

Over the last year, YOUmedia Hartford has focused its programs and services around creation, production, invention, and entrepreneurship. Thanks to the help of mentors and visiting artists, and in collaboration with community partners, teens have completed high-tech projects featuring advanced electronics, textiles, 3D printing, laser cutting, music production, and more.

Last March, several teams of youth used YOUmedia equipment to create digital projects they then entered into the 2015 Reel Youth Hartford Film Festival. One team won the “Hartford Awesome Award.” Teens are now utilizing the recording studio to produce, distribute, and market a “Best of Hartford Hip Hop” album with the help of local musicians and mentors. More than 750 teens are registered. Who knew hanging out (HO), messing around (MA), and geeking out (GO) would be so much fun?

### Loss Prevention

Every summer, our City's low income youth risk losing two to three months in reading achievement while their higher-income peers make slight gains. And, our youngsters also risk losing about two months of grade-level equivalency in math skills in the summer. Year after year, these losses accumulate. By the end of third grade, four out of every five low-income students fail to read proficiently, making them four times more likely to drop out of high school.

Our summer learning program this year had 6,143 participants up from a few hundred just three years ago. While feeding the soul is important, summer nutrition is also a significant factor in learning and play – the Library provides nearly 10,000 lunches throughout the summer. We are on this.



18,337

RECEIVED  
EARLY  
CHILDHOOD  
LITERACY  
PROGRAMMING

### Out of the Classroom, Into the Library

The Library and Hartford Public Schools have expanded their partnership this year to include 9 schools in 2 zones. Together we are creating a comprehensive learning environment by supporting student learning and school success through programming and other activities that develop students' language, reading and critical thinking abilities, by providing digital resources, such as e-books and online collections of traditional media, to students and learners across the City, by providing robust broadband connectivity and wireless access within our facilities, and, by ensuring accessibility by providing every student with a library card. There is nothing more important than ensuring that our children have the education and resources to thrive in the 21st century.



# A place for transforming communities

Hartford Public Library, with its sustained stature as a highly trusted entity, is an ideal resource to shape and lead discussions, decisions, and strategies that encourage active and purposeful civic engagement. HPL is already at the heart of the community, and civic engagement is at the heart of where the public library is going in the 21st century.



## ■ Libraries Transforming Communities (LTC)

Through its participation in LTC, HPL is deepening and broadening its capacity as an agent of hope by becoming as effective as possible in turning outward and leading positive change.



## ■ Job And Career

America's Job Center@HPL can help guide your search for a job with resume help, databases, classes and expert personal service from career guides – your one-stop shop for your entire job search needs.



## ■ We Belong Here – Hartford

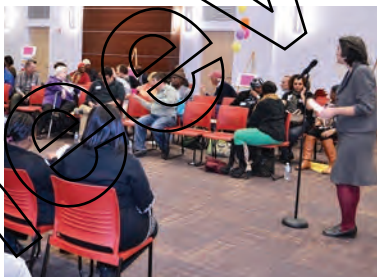
The Library provides support to new arrivals by linking them to programs and services available at both the Library and within the region, positioning them for success. We are all citizens of the world.





### ■ Four Freedoms

HPL is a fulcrum for public discussion and debate about the universality of freedom, religious extremism, and “dangerous ideas” and what they mean to the contemporary world.



### ■ Center For Community Engagement

The public library, as the most democratic of public institutions, is a place for the community to experiment and collaborate, to gather and engage, and to explore and confront important community issues such as homelessness, economic development, public health and environmental sustainability.



### ■ Get Money Wise

The Library offers a series of financial literacy workshops – for youth and families at library branches, schools, and at local community organizations with topics such as credit, paying for college, and the basics of investing.



## A place for transforming communities



*“People view their public library as this democratic place where opinions are heard, resources are universally available, everyone is welcome, and programs are offered about things that matter in the community.”*

**MATTHEW K. POLAND**

Chief Executive Officer, Hartford Public Library



### Turning Outward

The Library is one of ten public libraries in America participating in an intensive 18-month training program to strengthen our engagement with the community on high-priority challenges. Foundational concepts of the program include turning outward towards the community, developing an understanding of the community's aspirations, and working with community members to foster positive change.

Eight community conversations were held throughout the city's North End this year to learn about residents' aspirations and challenges, and to generate ideas for action. As a result of the conversations, the Library partnered with residents and the Hartford Police Department on a dialogue focusing on public safety, community violence, safe streets and building stronger relationships with the police. Participants identified action ideas, some of which are being implemented.

### Citizens of the World

We Belong Here connects individuals of different backgrounds and countries together to learn from one another, foster mutual understanding, share their experiences and enrich their lives. The Library is a connector for immigrants to resources, services and programs that can help them thrive in America and become involved in their communities, and a catalyst for conversation and collaboration between immigrants and the receiving community.

We do this through our Cultural Navigators program that pairs mentors with new residents, community dialogues that bring immigrants together with the citizens to discuss and develop solutions on issues of common interest, cultural programs at the Library where traditions and customs are celebrated and shared, and by engaging influential local, community, business and educational leaders as ambassadors of our work and partners in our programming.





1,939

CITIZENSHIP  
AND ESOL  
ATTENDANCE

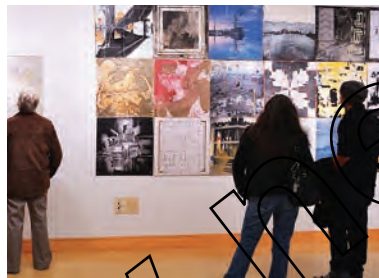
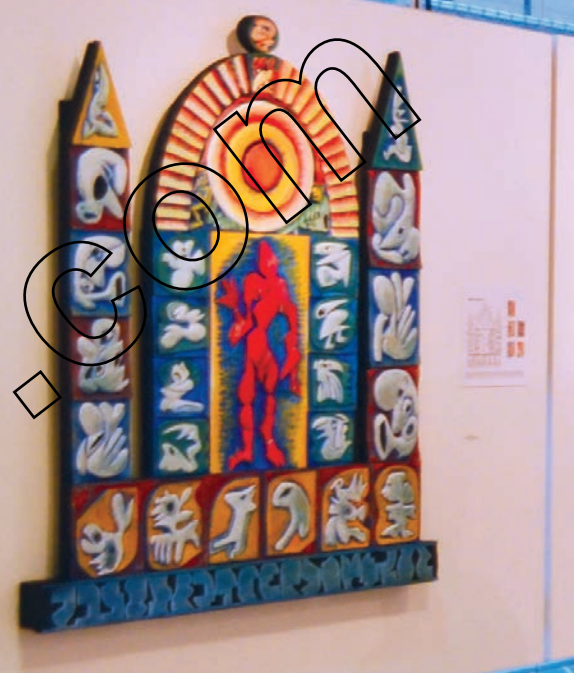
### Jobs = Success

America's Job Center @HPL provides services that include skills assessments, online job search assistance, career plan development, assistance with resume writing, counseling services and job referrals. One-on-one services are offered to help job seekers with career planning, referral to training and workshops, and job development and placement. Because these specific services will be available at the at the Library, career agents are available for more hours than the traditional one-stop employment center.

The Library has dedicated technology resources for the Center and a range of programming and onsite/online services to support the the career agents' work. Specialized software that builds technical skills is available to the Library's customers to ensure appropriate skill development to meet jobs that are in Hartford's job funnel.

# A place for the arts

HPL is a place to connect and create. By promoting and supporting the arts, the Library nurtures a more creative and expressive community, allowing those without access to art education or art museums to participate and learn in this cultural center of the City. Our programming allows customers both to consume and create.



## ■ ARTWalk

The gallery offers one of the largest and most stunning exhibition spaces in greater Hartford and the opportunity for visitors to view art in a magnificent setting in their own community.



## ■ Romare Bearden

Two precious murals by the Harlem Renaissance artist were relocated to the Library from the XL Center. The paintings were appraised at a combined \$4.2 million.



## ■ Elbert Weinberg

The Library is now home to six Elbert Weinberg original sculptures – and by no mere coincidence. Weinberg was a Hartford native, so exhibiting the statues here at the Library may even be called a homecoming of sorts.





### ■ Baby Grand Jazz

A series of 16 free jazz performances held in our Downtown Atrium on Sunday afternoons, January through April, that blends traditional styles with new sounds in a celebration of the diversity of jazz music.



### ■ The Hartford Weaver's Exhibition

Promoting the craft of hand weaving by people with low or no vision and those 55 and older to develop their skills and interest in weaving original and beautiful hand woven items.



### ■ Arts & Archives

As a creative aging library, HPL presents collections-based instructional arts and humanities workshops for older adults. The program demonstrates how a public library can use its historical collections as a source of lifelong learning and new directions.

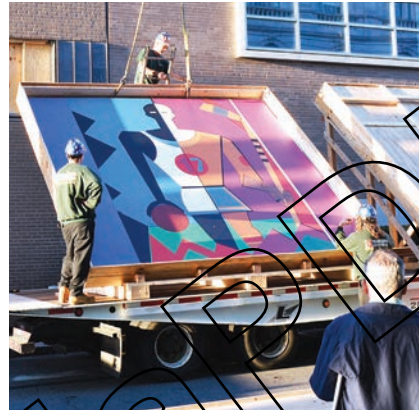
## A place for the arts



*“Creativity, like information, is free to everyone who steps into Hartford Public Library.”*

**BRENDA MILLER**

Chief Cultural Affairs and Public Programming Officer  
Hartford Public Library



### Big Art

The complex and colorful art of Romare Bearden (1911-1988) is autobiographical and metaphorical. Rooted in the history of western, African, and Asian art, as well as in literature and music, Bearden found his primary motifs in personal experiences and the life of his community.

Born in Mecklenburg County, North Carolina, Bearden moved as a toddler to New York City, participating with his parents in the Great Migration of African Americans to states both north and west. In 2014, the Library received two magnificent murals (Untitled 18'x12' and Olympics 18'x14') in a most unusual way.

### Native Son

The Library is now home to six Elbert Weinberg original sculptures. These works pepper our Downtown Library, perhaps the most prominent being an exuberant 13-foot-tall plaster sculpture of a woman, Demeter, whose only clothing is a hat of fruit, or perhaps the tender “Julia,” a bronze bust of Weinberg’s daughter welcoming guests into the main lobby. Now, documents of his fruitful but too-short life have come home to the Library’s Hartford History Center.

This extraordinary gift from the Elbert Weinberg Trust offers a window into the working life of a successful artist. His sketchbooks, photographs of all his sculptures, personal correspondence, and even his address books – filled with the names of art-world luminaries and East Coast foundries – are all part of the gift and is undergoing cataloguing and archival preservation.





53,293

ARTS AND  
CULTURAL  
ATTENDANCE

## New Chapter

Hartford Public Library provides hands-on fine arts and humanities workshops as well as heritage-based seminars taught by professional artists, “masters” in their fields. A wide array of hands-on instruction in pen and ink drawing, visual arts, poetry writing, photography, music appreciation, sculpture, and memoir writing is available.

Courses include a heritage-based seminar, either artist- or scholar-led, which incorporates artifacts, images, and personal narratives from the archives and special collections of the Hartford History Center. The hands-on instruction is enriched as participants think about an art or literary form in the context of Hartford’s history. Participants enjoy opportunities to discover (or re-discover) and express their creativity and develop artistic and critical thinking skills. Or maybe a new career!

# A place like no other

HPL is a welcoming space for a wide range of purposes —reading, communicating, learning, playing, meeting and getting business done. Its physical presence provides an anchor for economic development and neighborhood revitalization, and helps to strengthen social bonds and community identity. The library is also a virtual space where individuals can gain access to information, resources and all the rich experiences the library offers.



## ■ Branches

Throughout the City ten facilities serve the information, access, and technology needs of diverse neighborhoods creating a tapestry of 21st century library services for adults, children and families.



## ■ Platform

Perhaps the greatest challenge facing HPL today is to transform our service model to meet the demands of the knowledge society while securing a sustainable funding base for the future.



## ■ Kitchen at Hartford Public Library

The Kitchen brings together employment, education, access to healthy eating options, and a connection to the environment using hands-on training, community interactions, and a shared love for food.





## ■ One Book One Hartford

One Book One Hartford brings our richly diverse city together around a good book. For more than a decade the program has engaged and challenged readers from every neighborhood and all ages.



## ■ Hartford History Center

The Center is home to a non-circulating, multi-media collection comprised of more than 100,000 books, trade publications, directories, postcards, photographs and memorabilia that convey community life in Hartford spanning more than 300 years.



## ■ UCONN

An historic partnership like no other that will broaden and deepen library services for students and the public at the Downtown Library as part of the University's new Downtown Campus.

## A place like no other



*“The public library is a welcoming space for a wide range of purposes—reading, communicating, learning, playing, meeting and getting business done. Its design recognizes that people are not merely consumers of content but creators and citizens as well. Its physical presence provides an anchor for economic development and neighborhood revitalization, and helps to strengthen social bonds and community identity. The library is also a virtual space where individuals can gain access to information, resources and all the rich experiences the library offers.”*

ASPEN INSTITUTE 2014



### Branches of Opportunity

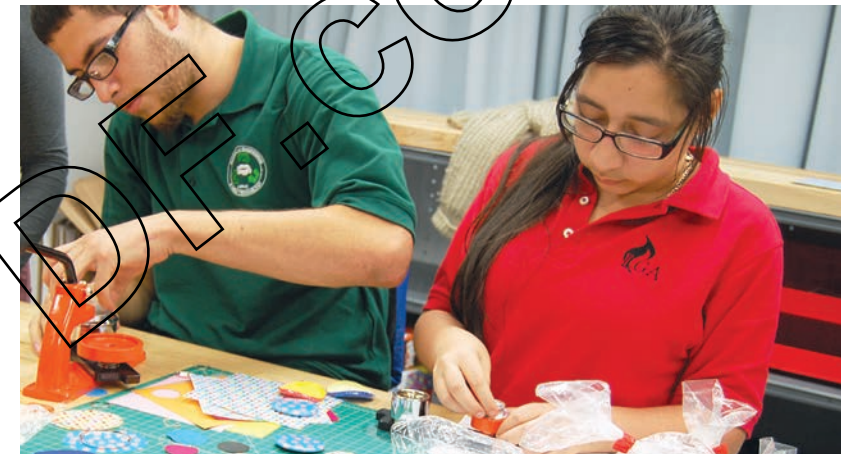
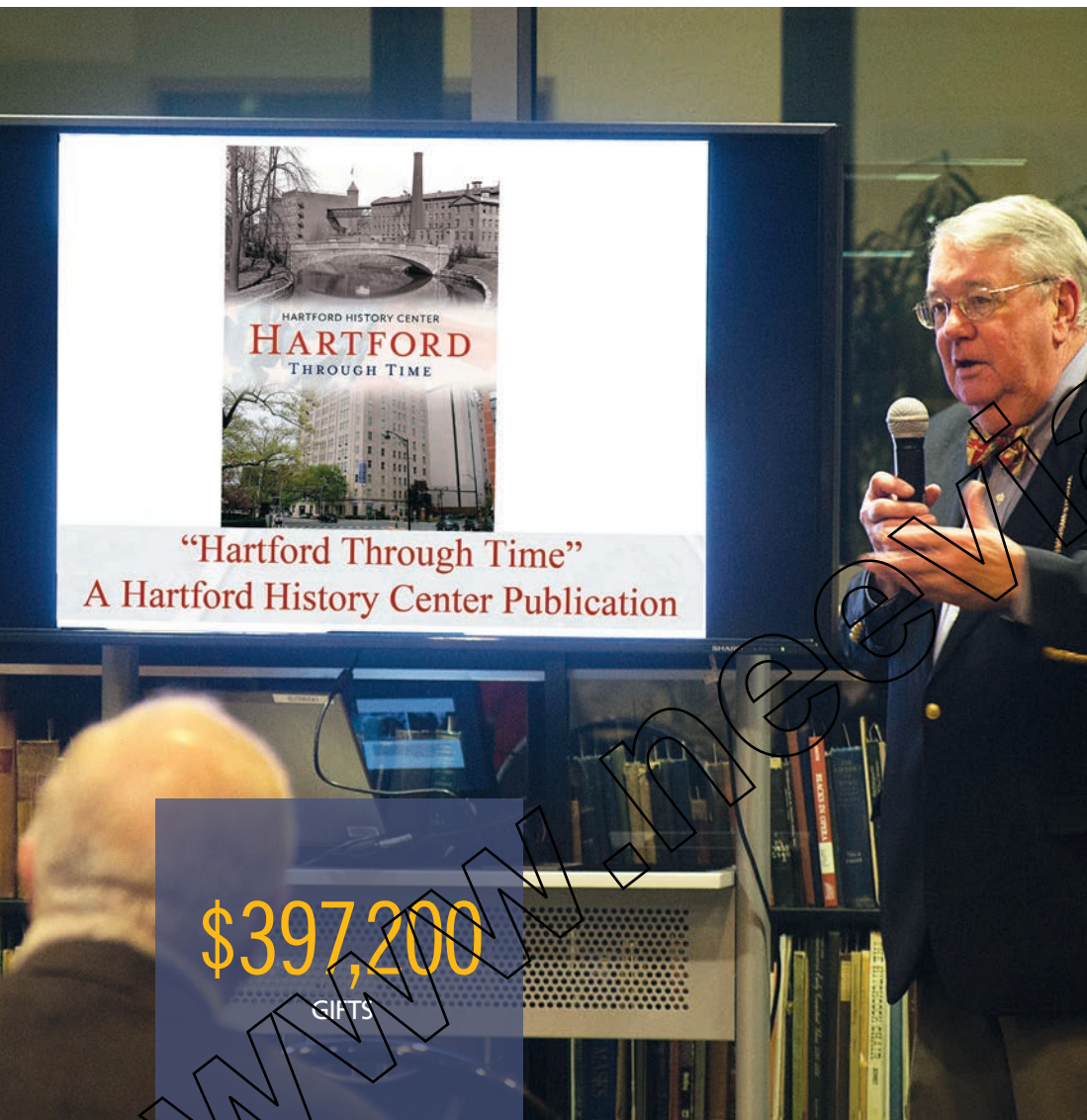
We are rapidly evolving in two diametrically opposed directions - On the one hand, we are investing in technologies that facilitate virtual interactions over our website, while we continue to be invaluable community hubs where neighbors can go to take a wide variety of classes and tutorials or access public services and technology. To take full advantage of these two trends, we are investing in new kinds of branches and service models.

### Where History Grows

The Hartford History Center is home to the Hartford Collection, a non-circulating, multi-media collection comprised of more than 100,000 books, trade publications, directories, postcards, photographs and memorabilia that convey community life in Hartford spanning more than 300 years. The archives and special collections of the Library date back to the 18th century, to our very beginning.

Today, the collection includes first edition volumes of Hartford authors Mark Twain, Lydia Huntley Sigourney, Thomas Tryon, Noah Webster, Harriet Beecher Stowe, Chuck Stone and Wallace Stevens as well as material from Dr. Horace Wells' estate. In addition, the collection holds an inscribed copy of Stowe's *Uncle Tom's Cabin* and the complete 90 volume bound collection of the Noah Webster pamphlets. The Center maintains the most complete municipal archive in the country.





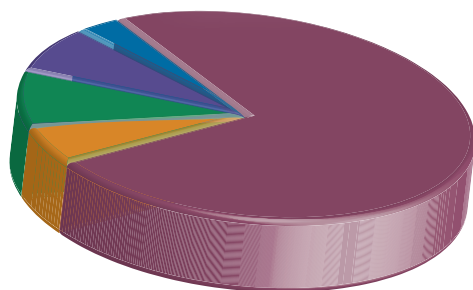
## The Third Place

The Library is user-centered. It provides opportunities for individuals and the community to gain access to a variety of tools and resources with which to discover and create new knowledge. Our platform enables the curation and sharing of the community's knowledge and innovation.

Our library platform is a “third place”—an interactive entity that can facilitate many people operating individually and in groups—supporting the learning and civic needs of the community. Ensuring access to e-books, other e-content and more-than-adequate high-speed broadband is a big concern going forward because it impacts our ability to fulfill one of our core missions as a public library—to procure and share the leading ideas of the day and enable everyone to participate in the world's conversations.

# 2014-2015 Financials

Revenues

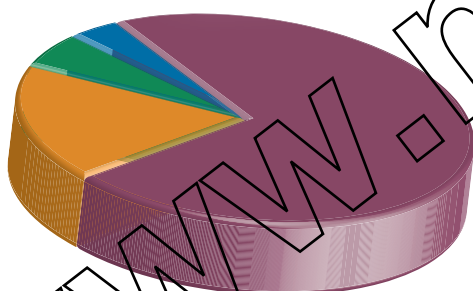


- City Contribution
- Endowment Income
- Fees Income
- Grants
- Gifts

\$8,215,000
\$616,511
\$97,800
\$883,687
\$397,200

Total Revenue **\$10,210,198**

Expenses



- Personnel Costs
- Other Operating Expenditures
- Library Materials
- Plant Operations & Maintenance

\$7,354,270
\$1,831,818
\$604,724
\$419,386

Total Expenses **\$10,210,198**

BY THE NUMBERS

**722,047**

ANNUAL VISITS

**544,124**

ANNUAL CIRCULATION

**300+**

COMPUTERS IN  
ALL LOCATIONS

**181,025**

COMPUTER SESSIONS

**27,792**

AFTER SCHOOL SESSIONS

**2,530**

RECEIVED JOB AND  
CAREER GUIDANCE

**\$883,687**

GRANTS



## Corporate Partners

### Education Partner Circle

**\$75,000**

Travelers Companies, Inc.

### Literacy Partner Circle

**\$50,000**

The Hartford Financial Services Group, Inc.

### Best Beginnings Partner Circle

**\$25,000**

Hoffman Auto Group

### Community Partners Circle

**\$10,000+**

CIGNA

Eversource

Hartford Municipal Employees Federal Credit Union

Hinckley Allen

### Hartford History Partners Circle

**\$5,000**

Comcast

NBC Connecticut

### Friend Partners Circle

**\$2,500**

Anthem Blue Cross and Blue Shield

Fiduciary Investment Advisors, LLC

First Niagara

Legrand

Landmark Partners LLC

MetroHartford Alliance

Southside Institutions Neighborhood Alliance, Inc.

The Pita Group

Trinity College

### "Small Business Loves HPL" Partners Circle

**\$1,000**

Adams Ahern Sign Solutions, Inc.

Berkshire Bank

Connecticut Center for Advanced Technology, Inc.

Siegel, O'Connor, O'Donnell, & Beck, P.C.

## Foundations/ Organizations

### \$100,000+

Hartford Foundation for Public Giving (HFPG)

### \$20,000+

Nutmeg Foundation

The Beatrice Fox Auerbach

Foundation Fund

The Charles H. Kaman Charitable

Foundation, Inc.

The Stocker Foundation

### \$10,000 - \$15,000

Brown Rudnick

J. Walton Bissell Foundation, Inc.

Wells Fargo

### \$5,000 - \$9,999

Bank of America

Bank of America Charitable

Foundation

Lincoln Financial Foundation, Inc.

The Fund for Greater Hartford

The McPhee Foundation, Inc.

NewAlliance Foundation

### \$2,500 - \$4,999

Capital Region Education Council

Evelyn Preston Memorial Fund

Hartford Area Childcare Collaborative

Kettering Foundation

Kids' Education Fund

S.A. Johnson Family Fund

The Charles Nelson Robinson Fund

United Bank Foundation

### \$1,000 - \$2,499

Aaron Hollander Fund

Ahern Family Foundation

American Library Association

Bear's Smokehouse LLC

Belle K. and Irving S. Ribicoff Fund

Florence and Charles Rubenstein Family

Foundation Fund

Greater Hartford Arts Council

Saunders Foundation

Simon Hollander Fund

Stanley D. and Hinda N. Fisher Fund

The Hartford County Bar Foundation, Inc.

The Hartford Steam Boiler Inspection

and Insurance Co./Munich RE

The Lyman B. Brainerd Family

Foundation Fund

XL Insurance Company

### Under \$1,000

Aetna Foundation

B&P Realty, LLP

Griebel Family Fund

Hartford Preservation Alliance

Hartford Steam Company

Identifax Research Services

Integrated Care Partners

Marion and Ellsworth Grant Fund

Marsh USA Inc.

Phillip I. Blumberg Fund

Prudential Foundation

Pullman & Comley, LLC

Shipman & Goodwin, LLP

Society of the Descendants of the

Founders of Hartford, Inc.

The Zachs Family Foundation, Inc.

Transformed Health & Fitness Ministries

International LLC

Travelers Community Connections

Truist, Inc.

United Way Of Central and

Northeastern Connecticut

United Way of Pioneer Valley

YMCA of Greater Hartford

### Government Funding

City of Hartford

Connecticut State Department

of Education

National Endowment for the Arts

(NEA)

National Endowment for the

Humanities (NEH)

Institute of Museum and

Library Services (IMLS)

State of Connecticut

U.S. Department of Homeland Security

C CORPORATOR  
 Bold BOARD OF DIRECTORS  
 O EMPLOYEE  
 \* DECEASED

## Individuals

### \$20,000 +

Howard C and Sandra C Fromson  
Elizabeth Schiro and Stephen Bayer

### \$10,000 - \$15,000

Dr. Kenneth M. Gorfkle, Ph.D.

### \$5,000 - \$9,999

Anonymous

**Anne Melissa Dowling C**

Mr. Barry N. Lastra and Ms. Alison Coolbrith  
Geraldine C and Timothy J. Sullivan Sr.

### \$2,500 - \$4,999

Anonymous

Coleman H. and Jo C Champlin Casey

**Mr. Andrew Diaz-Matos C**

Michael A. Peck, Esq.

### \$1,000 - \$2,499

The Honorable Ellen Ash Peters and

Dean Phillip I. Blumberg

Mr. and Mrs. Richard P. Brainerd

**Mr. C** and Mrs. **Luke Bronin**

Erin and **Julio Concepcion C**

**Mr. Gregory C. Davis C**

Jennifer C and **Marc DiBella C**

Jerry and Ida Franklin

Reverend Henry C. Frascadore

Mr. Philip T. Gay

**Mr. C** and Mrs. **John Godsill**

Dr. John Grady-Benson &

Ms. Cate Grady-Benson

Donna Haghighat and

Christopher R. Dickinson

Ms. Susan Lagassee

Antoinette Lazarus

Adlyn and Ted Loewenthal

**Ms. Thea Montañez C**

Paula Murphy

Ms. Sara C. Norris

Matthew K. Poland O and Jeffrey S. Capelle

**Mrs. Belle K. Ribicoff C**

Mr. and Mrs. Randolph Ronco

Mr. Kenneth Rubenstein

Mr. and Mrs. Richard Rubenstein

Mr. and Mrs. William B. Thomson

Mr. Stephen E. Zielinski and  
Ms. Joanne Gagnon

### \$500 - \$999

**Ms. Ana Alfaro C**

Mary O and Colin Billings

Douglas A. Cohen and Phyllis F. Shikora

James and Susan Finnegan

R. Nelson Griebel

Eunice C and Thomas Groark

Ms. Diana Haghighat

Ms. Leslie Hammond

Kelly Hayes

Mr. Carlos Huertas

Mr. Thurman Justice and

Ms. Jahn Marie Surette

Robert and Mary LaPorte

Mr. and Mrs. Brendan M. Lynch

Duby McDowell C

Marge Morrissey C

Gina and Adnaan Muslim

Ms. Homa Naficy O

Mr. Marc Nelson

Elizabeth J. Norman C and Paul H. Eddy

Gilda Rotcarl O

James C. Rouman, M.D.

Mr. and Mrs. Thomas Swarr

Mr. and Mrs. Richard E. Thibodeau

Mr. Henry M. Zachs

### \$250 - \$499

Mr. Daniel Alexandre O

Mr. Allen A. Ambrose

Robyne Watkin Anson

Mr. and Mrs. John F. Byrnes

Jane Callanan

Mr. Edward Casares

Richard and Patricia Cobb

Mr. Michael Couloute

Ms. Elizabeth M. Davis O and

Mr. John Randolph

Ms. Vernelle Davis

Mr. Charles P. DeLeo and

Ms. Rose Marie Cilia

Ms. Yrma DiBenigno

Mr. and Mrs. Wilson H. Faude

Lynn Ferrari and Virginia Seeley

Mr. Richard Frieder O and

Ms. Madeline McClave

Mr. and Mrs. Timothy Fromson

Michelle K. Gaeta

William T. McNair & Adrienne Gale

John and Tracy Gale

Patricia and **Stephen Goddard C**

Ira and Linda Goldman

Ms. Kate Houlihan

James and Mary Ellen Jacobs

Mr. Steve Jewett

Ms. Nicole Kinney

Tag and Amy LaBossiere

Mr. Robert Lingeman and Ms. Jane H. Howe

Ms. Mary E. Mahler C

Robert and Maura Mathieu

Mr. Raymond McKenna

Mr. Anthony Michalak

Mrs. Sarah G. Needham

Mr. Christopher Nixon

Don and Elizabeth Brad Noel C

Dr. Daniel P. O'Shea, Jr.

Dr. Robert L. Painter C and Ms. Nancy Macy

Ms. Elizabeth A. Perrin

Mr. James Platts

Jeffrey and Carol Poehnert O

C. Patrick and Linda Proctor

Mrs. Cynthia W. Reik C

Ms. Martha K. Risser and

Mr. Peter D. Tessner

Mr. Matthew D. Ritter and Ms. Marilyn Katz

Mr. Antonio Rodriguez

Ms. Hollis Schneider

Mark Schreier

Ms. Jenny E. Smith

Mr. Theodore M. Space C and

Ms. Martha Collins

Andrew and Sandra Stern

Charles and Elizabeth Stewart

Theodore Tucci and Nancy Hronek

Joseph and Katherine Walker

Mr. and Mrs. Richard Wareing

Brooke and Edward Whittemore

Ms. Judy G. Young



**\$100 - \$249**

Mr. Alexander Adami  
 A. Karim Ahmed  
 Ms. McKinley Albert  
 Richard A. Alleyne  
 Ms. Larlie B. Alvaranga  
 Mrs. Kelly M. Alver and Mr. Craig A. Alver  
 Sherwood and Kathleen Anderson  
 Mr. and Mrs. Daniel M. Arnold  
 Karen and James Bachman  
 Linda and Herb Barton  
 Ms. Deborah Bartucca  
 Ms. Linda A. Bayer<sup>¢</sup>  
 Mr. William H. Beckham  
 Ms. Patricia L. Berberich  
 Raymond G. Bertuzzi and Gerson E. Escobar  
 Mr. Tom Bittel and Ms. Cynthia Dodd  
 Mrs. Eleanor W. Blake  
 Ms. Deborah Brennan  
 Art and Carol Bruce  
 Val Bryan  
 Harold and Joyce Buckingham  
 Mr. Sheldon M. Bustow<sup>¢</sup>  
 Mr. Ken Byer  
 Ms. Annette W. Carter<sup>¢</sup>  
 Devi Mohanty & Rashmi Chandra  
 Brian and Susan Clemow  
 William and Maura Cochran  
 Ms. Sherry A. Coelho and  
 Mr. Keith E. Merritt  
 Mrs. Gerry C. Cohen  
 Thomas and Anne Condon  
 Ms. Catherine H. Connor  
 Ms. Leticia Cotto<sup>°</sup>  
 Charles and Mary Coursey<sup>¢</sup>  
 William and Ilona Crosswhite  
 Mr. and Mrs. Kurt Stephens Cabbage  
 Edwin and Patricia Dahill  
 Ms. Sharon Danosky  
 Ms. Ethel Davis  
 Ms. Margaret DeBor  
 Councilman Larry Deutsch, M.D.  
 Robert Dionne II  
 Ms. Ana L. Dobbs  
 Ms. Uta Dodson  
 Ms. Anita J. Durkin and Mr. Kenneth J. Long  
 James and Dorothy Elsner  
 Ms. Barbara J. Fantone

Ms. Norvilla C. Findlay  
 Mr. Lawrence Fish  
 Ms. Kathleen Fitzsimmons  
 Joseph and Diane Foley  
 Mr. Thomas Foran  
 Mr. Timothy S. Galligan and  
 Ms. Barbara A. Hocker  
 Ms. Romilda Garet-Neville  
 Kathleen and Thomas Garrity  
 Mr. and Mrs. David W. Gay  
 Ms. Toni A. Gold  
**Constance Belton Green, J.D., Ed.D. ¢**  
 Mr. and Mrs. Arnold C. Greenberg  
 Zabelle Krasow Greenblatt  
 Frank Hagaman  
 Mr. and Mrs. Gary Hance  
 Michelle G. Helmin  
 Debra Horn and Carol A. Gale  
 Ms. Cynthia E. Hugel  
 Donald and Nancy Hunt  
 Albert and Jacqueline Ilg  
 Shariq Iqbal  
 Dr. Jacqueline and Stephen Jacoby  
 Mathew P. and Valerie S. Jasinski  
 Mark W. Jay and Karen Pakula  
 Patricia and Steven Kane  
 Anna Karanalis  
 Ms. Karen A. Kelleher  
 Mr. Daniel S. Kelman and  
 Ms. Susan R. Brown  
 Ms. Elizabeth Kilmartin  
 David and Janice Klein  
 Ms. Patricia A. Knapp<sup>°</sup>  
 Maria Kokiasmenos  
 Dr. Bernard Kosto and Mrs. Gale Kosto  
 Hernan<sup>¢</sup> and Evelyn LaFontaine  
 Mr. Gregory R. Lanza<sup>°</sup>  
 Ms. Becky Latimer  
 Mr. and Mrs. Ronald M. LaVigne  
 Barbara Lederer and Laurel Hennebury  
 Margaret P. Levy, Esq.  
 Ms. Estela R. Lopez  
 Ms. Beverly A. Loughlin<sup>¢</sup>  
 Mr. James B. Lyon, Esq.<sup>¢</sup>  
 Mr. and Mrs. Alan MacKenzie  
 Ms. Sibongile Magubane  
 Richard Mains and Elizabeth A. Eipper  
 John and Jacqueline Mandyck

Ms. Ellen McCreery  
 Ms. Jackie McKinney  
 Mr. and Mrs. Juan J. Moreno  
 Ronald and Jody<sup>¢</sup> Morneault  
 Ms. Sarah Mullane  
 Mr. and Mrs. James M. Mullarkey  
 Ms. Ann Faude Newbury  
 Lynn Olson-Douglas<sup>¢</sup> and Henroy Douglas  
 Ms. Sharon O'Meara  
 Martha C. Page and William Young  
 Daniel<sup>¢</sup> and Beth Papermaster  
 Maryanne and Gregory Petrus  
 Mr. Thomas Phillips  
 Ms. Kathryn Pickard  
 Ms. Betsy Pigeon  
 Dr. and Mrs. John Polio  
 Mr. and Mrs. Thomas A. Porter  
 Kenneth L. Przybysz  
 Mr. Edgar Ramos  
 Mrs. Emily W. Rankin  
 Dr. Sedrick and Alyce Rawlins  
 David Robinson  
 Lew and Amy Robinson  
 Nellie Uccello Romaine<sup>¢</sup>  
 Ms. Lucy Rosenblatt  
 Ellen Rossi  
 David and Linda Roth  
 Katie Russo  
 Ms. Laura Santirocco  
 Mr. Daniel Schnaidt and Ms. Cynthia Tucker  
 Ms. Wanda N. Seldon  
 James and Marguerite Sequin  
 Dr. and Mrs. Ronald A. Serocki  
 Susan and Jamie Severo  
 Margaret<sup>¢</sup> and Scott Shanks  
 Jeffrey and Susan Shapiro  
 Ms. Alison Sharaf  
 Ms. Barbara Sicherman  
 Dr. Nancy D. Sinsteden and  
 Mr. Thomas D. Sinsteden  
 Robert<sup>¢</sup> and Sharon Smith<sup>¢</sup>  
 Mr. Lonsdale Snyder  
 Mark Socha  
 Mr. and Mrs. Samuel Stout  
 Mr. Timothy J. Sullivan Jr. and  
 Ms. Emily R. Noel<sup>¢</sup>  
 Allan<sup>¢</sup> and Sally Taylor  
 Jane S. Edwards and Humphrey R. Tonkin<sup>¢</sup>

C CORPORATOR  
**B** BOARD OF DIRECTORS  
 ○ EMPLOYEE  
 \* DECEASED

Ms. Jane Torrey  
 Mr. Al Torromeo  
 Mr. and Mrs. Anthony J. Tranghese  
 Mrs. Beverly S. Truebig  
 Ms. Maria Z. Tsitsirides  
 Ms. Mary T. Tzambazakis ○  
 Marie Denise Voltaire  
 Dawn and Mark Von Mayrhauser  
 Ms. Lyn G. Walker and Mr. Tyler Smith  
 Harry Weirnerman and Hilary Meyers  
 Philip S. Wellman and Leslie F. Smith  
 Carol and Lee West  
 Mr. Reeves W. Westmoreland  
 Mr. Grant Wiggins  
 Mr. and Mrs. David A. Williams  
 Ms. Holly Winger

#### Under \$100

Anonymous  
 Mr. James J. Ahern  
 Ms. Nancy Aker  
 Mr. Gregory B. Allen  
 Mr. and Mrs. Gustave W. Andrian  
 Mr. Ivan Backer  
 Ms. Paulette Bacon  
 Mr. Leonard I. Banco  
 Joe Barber  
 Ms. Kathleen J. Barletta  
 Dr. Dennis Barone and Dr. Deborah  
 Ducoff-Barone  
 Ms. Barbara A. Barrett  
 Ms. Gillian Barry  
 Dr. Jane M. Barstow and  
 Mr. Norman D. Barstow  
 Ms. Patricia R. Beauregard  
 Mr. Peter J. Belle  
 Ms. Claire L. Bergin  
 Mr. Robert W. Berglund  
 Ms. Sara L. Bernstein  
 Kabira and Sanil Bhajan  
 Kelly Bilodeau  
 Mrs. Louise Blalock  
 Raymond and Karen Bliss  
 Mr. David Brandwein  
 Mr. and Mrs. Bruce M. Brenner  
 Mary and Bill Britcher  
 Roger H. Brown  
 Ms. Barbara Buckley  
 Ambreen Bukhari

Mr. Stephen Burnham  
 Ms. Dorothy A. Burts  
 Ms. Rajranie Busgith ○  
 Ms. Nancy Caddigan ○  
 Mr. Bob Calef  
 Dr. Ozlem Camli  
 Mr. and Mrs. Michael A. Cantor  
 Ms. Eleanor Caplan  
 Mr. Nicholas P. Cardwell  
 Mr. H. Peter Carlson  
 Mr. and Mrs. John G. Casey  
 Ms. Janet M. Castricum and  
 Mr. Frank Santo-Donato  
 Mr. Bob Cave  
 Ms. Barbra Cerny  
 Mrs. Polly U. Champ  
 Ms. Jane Charette  
 Francis J. Chiaramonte and Givrice Archer  
 Ms. Margaret Clapin-Merriman  
 Edward E. Clark and Joan Pritchard  
 Ms. Leslie Clark  
 Ms. Constance Clifford  
 Ms. Edna M. Clunie  
 Ms. Marie P. Codurn  
 Michael and Naomi Cohen  
 Henry and Linda Cohn  
 Ms. Judith Collison  
 Mr. James P. Condren and  
 Dr. Ellen Robinson  
 Ms. Victoria Copes  
 Anna and Charles Corcoran  
 Ms. Sue Corriveau  
 Ms. Florence E. Coston  
 Mr. and Mrs. Edward Cowing  
 Mr. Robert D. Coykendall  
 Mr. Ronald Cretaro  
 Ms. Mary F. Cunningham  
 Ms. Jessica Daase  
 Ms. Diane Del Rosso  
 Ms. Barbara M. Dennis  
 William and Ann Dest  
 Peter and Natalia Diamond  
 Mr. Rupert A. Dinnald Sr.  
 Ms. Carolyn Dorais  
 Dr. William F. Dougherty  
 Ms. Barbara Doyle  
 Mr. Michael J. Drescher  
 Ms. Martha E. Drummond  
 Ellen Eisenberg, D.M.D.

Ms. Anna M. Elliott  
 Mrs. Alycia Evica  
 Salvatore M. and Anita L. Faulise  
 Francis P. Feeney  
 Mr. Robert L. Felson  
 Mrs. Carol G. Fine  
 Daniel and Joan Fine  
 Marianne Gilbert Finnegan  
 Karl ○ and Alison Fisher  
 Mr. Thomas J. Fitzpatrick  
 Mr. Corey Fleming ○  
 Laurence and Beverly Fleming  
 Joy M. Floyd  
 Mr. Donald A. Forrest  
 Mr. Arthur W. Frank Jr.  
 Ms. Martha C. Fransson  
 Ms. Elizabeth S. Freedman and  
 Mr. Clifton E. McPherson  
 Lucretia Fuentes and Juan Fuentes  
 Vizcarrondo\*  
 Wendy H. Furniss and Jacqueline A. Wilson  
 Mr. John T. Fussell and Ms. Mina Mina  
 Mrs. Jane V. Gallagher  
 Al and Kathy Garofolo  
 Ms. Margaret L. Gasparino  
 Mr. Brian Gauger  
 Ms. Margaret E. Gaughan  
 Mr. and Mrs. Jackson G. Gemmell  
 Ms. Elizabeth Gemmiti  
 Ms. Linda B. Gibson  
 Mr. Walter Giger and  
 Mrs. May-Wo Foo Giger  
 Sharon and Lawrence Girard  
 Ms. Jennifer Glick  
 Ms. Katherine A. E. Goss  
 Mr. and Mrs. Paul G. Grady  
 Mr. Victor S. Grandison  
 Ms. Ruth Grant  
 Raymond and Margaret Grasso  
 Ms. Esther Gray  
 Mr. James M. Griffin Jr.  
 Mr. and Mrs. William B. and  
 Maureen Grothaus  
 Ms. Sylvia L. Halkin  
 Mr. Bruce Hall  
 Ms. Natalie B. Harbeson  
 Ms. Caroline Hardy  
 Ms. Robin S. Harris  
 Barbara and Carl Haydasz



Robert and Christine Healey  
 Mrs. Louise T. Healey  
 Ms. Mary Frances Hennessy  
 Mr. Peter Herrmann  
 Ms. Mary M. Heslin  
 Marcia D. Hinckley  
 Ms. Josephine Hodges  
 Ms. Joy Holder  
 Ms. Suzanne E. Holland  
 Ms. Lily Holthoff  
 Carmen P. Holzman  
 Simone and William Clay Howe  
 Eugene C. Hoyt  
 Mr. Lawrence P. Hudson and  
 Ms. Ziva Stauber  
 Mr. and Mrs. Herbert G. Isaacson  
 Peter and Nancy Janus  
 Ms. Jannett Jennings  
 Ms. Sue C. Jimerson  
 Mr. and Mrs. Michael W. Johnson  
 Ms. Grace Kane  
 Ms. Rosalind Katz  
 Mr. and Mrs. Marvin Kay  
 Ms. Margaret M. Kelly  
 Patrick and Ann Kenny  
 Tracy King  
 Miss Helen L. Klitsch  
 Ms. Julie Koss  
 Dr. Michael Krall and Mrs. Elizabeth E. Krall  
 Ms. Pauline A. Kruk  
 Lee G. Kuckro  
 Dr. Alan M. Kudler and Ms. Linda G. Glick  
 Mr. and Mrs. Alphonse S. Labieniec  
 Ms. Florence Langridge  
 Mr. and Mrs. Mark E. LaRonde  
 Mr. Se-Jin Lee and Ms. Emily L. Germain Lee  
 Coleman and Judie Lewy  
 Mr. Harry L. Lichterbaum  
 Ms. Mary F. Livermore  
 Mrs. Elaine T. Lowengard  
 Ilene Lowenstein  
 Ms. Wendy Lyon  
 Ms. Ruth Maedel  
 Ms. Leta W. Marks  
 Ms. Lucy Marsters\*  
 Ms. Doris E. Martin  
 Mr. and Mrs. Nick Martoccia  
 William and Jo Anne McClurg  
 Carol A. McCue

Mr. Michael McGuinness  
 Ms. Trudi McKenna  
 Ms. Jean M. McNamara  
 Robert P. and Nancy J. McNamara  
 Ms. Kathi Meding  
 Mr. Benedict J. Mennillo  
 Mr. Dave Messenger  
 Elizabeth MacKiernan Miel  
 Ms. Ann Monroe  
 Timothy C. and Rosemary Moynihan  
 Robert and Marnie Mueller  
 Ms. Sara G. Napper  
 Elsie Y. Nelson  
 Ms. Martha-Rea Nelson °  
 Ms. Millicent Neusner  
 Mr. William J. Noonan  
 Mr. Ezekiel Ojekunle  
 Zamil Oquendo  
 Ibrahim and Kenan Orgun  
 Mrs. Reata O. Overman  
 Mr. James A. Palmieri Jr.  
 Charles Paprzyca  
 Mr. and Mrs. Barry Pearson  
 Mr. and Mrs. David A. Pels  
 Ms. Joanna M. Penta  
 Mr. Alan M. Perreault  
 Ms. Lisa Perrone  
 Ms. Jean P. Philips  
 Harvey and Karen Picker  
 Joan E. Pilver  
 Mr. Francis R. Piscitello and  
 Ms. Jeanne M. Picklesimer  
 Sister Claire Plamondon  
 Mr. and Mrs. Michael D. Plouffe  
 Mr. Raphael L. Podolsky  
 Ms. Kathleen Pompa  
 Mr. and Mrs. Edward J. Potaski  
 Ms. Judith G. Pott  
 Ms. Judith Power  
 Mr. Salvatore Presutti  
 Amelita and Ruby Punongbayan  
 Mr. Bruce Putterman  
 Mr. Robert Randich  
 Mr. David F. Ransom °  
 Mr. David J. L. Blatt and Ms. Renae P. Reese  
 Mr. and Mrs. Allan B. Reiskin  
 Ms. Marianne E. Riccio  
 Dana Ring  
 Ms. Jean Rioux

Mr. Philip Rischall  
 Penn Ritter and Robin Kipnis  
 Mr. Maurice D. Robertson  
 Mr. Bradford R. Robinson and  
 Ms. Susan L. Kirschner-Robinson  
 Ms. Conchetta B. Robinson  
 Mr. Curtis Roessler  
 James and Lorraine Rogers  
 Ms. Katrease Rogers  
 Ms. Margaret E. Romanik  
 Mr. Bernard H. Rosen  
 Mr. Julia M. Rosenblum and  
 Mr. Robert L. Felson  
 Mr. and Mrs. Todd H. Rosenthal  
 Ms. Clare M. Rossini and  
 Mr. Joseph R. Byrne  
 Mr. and Mrs. Juan B. Rua  
 Mr. William Rubenstein and  
 Ms. Judith Eisenberg  
 Ms. Josephine W. Sale °  
 Mrs. Margaret Salzer  
 Mr. Steven L. Samalot and  
 Mrs. Ming C. Samalot  
 Ms. Christie M. Sanders  
 Maria and William Sassi  
 Helen and Henry Savage  
 Mr. Robert B. Savage  
 Frederick and Philomena Sawyer  
 Mr. Dominic N. Scalia  
 Ms. Shelley Schuman  
 Mr. Paul Seals  
 Ted and Ellen See  
 Ms. Jennifer Sharp °  
 Ms. Janet Shepard  
 Richard W. Shettle  
 Ruth Gertrude Shields  
 Mrs. Doris J. Shuskus  
 Carol Sicbaldi  
 Dr. Louise B. Simmons  
 Ms. Donna L. Sodipo  
 Ms. Ruth Solomkin  
 Mr. Frederick A. Spaeth and  
 Ms. Eliana Tsukroff  
 Mr. Lawrence Spellacy  
 Pamela and J. Paul St. Jean  
 Mr. Edward L. St. John  
 Mr. Sheldon B. Steinhaus  
 Dr. Doreen Stern Ph.D.  
 E. Reuel Stoltz

**C** CORPORATOR  
**Bold** BOARD OF DIRECTORS  
**o** EMPLOYEE  
**\*** DECEASED

Jay and Susan Stoppelman  
 Mr. and Mrs. Robert C. Stott  
 Ms. Carol Sweedock  
 Ms. Kathy Sweeney  
 Mrs. Sebastiana S. Szilagyi  
 Mr. and Mrs. Joseph D. Taitague  
 Huyen and Jin Mei Tang  
 Mr. Phillip D. Tegeler and Ms. Anne Goldstein John and Ellen Thomas  
 Lynn Hayes Thomas  
 Clarice Thornton  
 Kathleen and Robert Tumillo  
 Mr. and Mrs. Daniel M. Underberger  
 Mr. William B. Upholt and  
     Ms. Mary Lee Morrison  
 Mr. Stephen Utz  
 Mr. Kevin J. Velturo  
 Mr. and Mrs. Carl R. Venditto  
 Ms. Analia Villagra  
 Ms. Catherine Wade  
 Mr. Alvie Ward  
 Mr. Arthur L. Wasserman Jr.  
 Ms. Barbara Wener  
 Mr. Robert Werner  
 Ms. Sonya E. Wetstone  
 Gary and Diane Whitney  
 Mr. and Mrs. Michael S. Wilder, Esq.  
 Lisa and Paul Wilders  
 Philip and Karen Will  
 Raymond and Sarah Winter  
 David and Janet Wojcik  
 Mr. David Wolansky  
 Ms. Clara A. Wolf  
 Ms. Rose Worobel  
 Ms. Everlin Wright  
 Mr. Bernhardt Wruble  
 Amy F. Xie  
 Mrs. Ruth H. Yancovitch  
 Ms. Corrairie Yraya  
 Ms. Shirley R. Zelman  
 Mr. Steven M. Zhitnik and  
     Ms. Anne L. Rapkin  
 Mr. Eugene J. Ziurys Jr.  
 Dawn M. Zumbroski **o**  
 Mr. and Mrs. Moshe L. Zwang

## Tribute Gifts

### In Memory of

Ira "Hank" Berger  
 Victoria Lee Bingham  
 Nancy C.  
 Wilbur Crimmin  
 Irene Domeisen  
 Rose Draghi  
 Dorothy Drysdale  
 Patricia Forrester (18)  
 Joseph Karas (3)  
 Maureen Platt  
 Seymour Stern  
 Robert A. Weinerman  
 Ruth Wilbur

### In Honor of

Marvin Boynes  
 Sandra Bender Fromson  
 Leslie Hammond  
 Alice Krall  
 Brenda Miller (2)  
 Sara ("Sally") Morris  
 Johanna Sierra  
 Geraldine Sullivan  
 Susan Juster Viner

## Baby Grand Jazz Collections

**\$1,425**

## In-Kind

AM Lithography Corporation  
**Anne Melissa Dowling <sup>c</sup>**  
 Bear's Smokehouse Barbecue  
 Billings Forge  
 bin 228  
 Canyon Ranch  
 Capital Grille Restaurant  
 Central Optica  
 Copper Beech Institute  
 Costa del Sol  
 Cynthia Dodd, The Dirt Salon LLC  
 David Alan Hospitality Group

Ebbie Slacum Hodnett  
 Elizabeth Abbe  
 First and Last Tavern  
 Gillette Ridge Wines  
 Hartford Denim Company  
 Hartford Distributors, Inc.  
 Hartford Flavor Company  
 Hartford Golf Club  
 Hartford Prints  
 Hoffman Auto Group  
 Infinity Music Hall & Bistro, Hartford  
 J Restaurant/Bar  
 Katharine Robinson  
 LAZ Parking  
 Lincoln Culinary Institute  
 Linda Kurylowski  
 Liquid Nirvana  
 Lisa Kempf Design  
 Majorca  
**Mayor Pedro Segarra <sup>c</sup>** and  
     Mr. Charlie Ortiz  
 Mohegan Sun  
 Omar Coffee Company  
 Rosalind G. Spann and Antonia Torres  
 Salute  
**Stephen B. <sup>c</sup>** and Patricia Goddard  
 T. Edward Connecticut, LTD.  
 Tangiers International  
 Tastease  
 Ted's Montana Grill  
 The Brothers Crisp  
 The Center for Massage & Holistic Therapy  
 The Hartford  
 The Library Hotel  
 The New Britain Rock Cats  
 Ticket Network  
 Tim Sullivan  
 Travelers Championship  
 University of Connecticut/  
     Division of Athletics  
 Vito's by the Park  
 Wampanoag Country Club  
 Worldwide Wines  
 YOUmedia at Hartford Public Library  
 Zest 280



## Board of Directors

Ana Alfaro  
 Luke A. Bronin  
 Julio A. Concepcion, *Vice President*  
 Gregory C. Davis, *Interim President*  
 Andrew B. Diaz-Matos  
 Marc A. DiBella  
 Anne Melissa Dowling  
 Stephen B. Goddard  
 Jack Godsill  
 Constance Belton Green  
 Edward C. Keith III, *Treasurer*  
 Thea Montañez  
 Mayor Pedro Segarra, *Ex Officio*

## Library Leadership

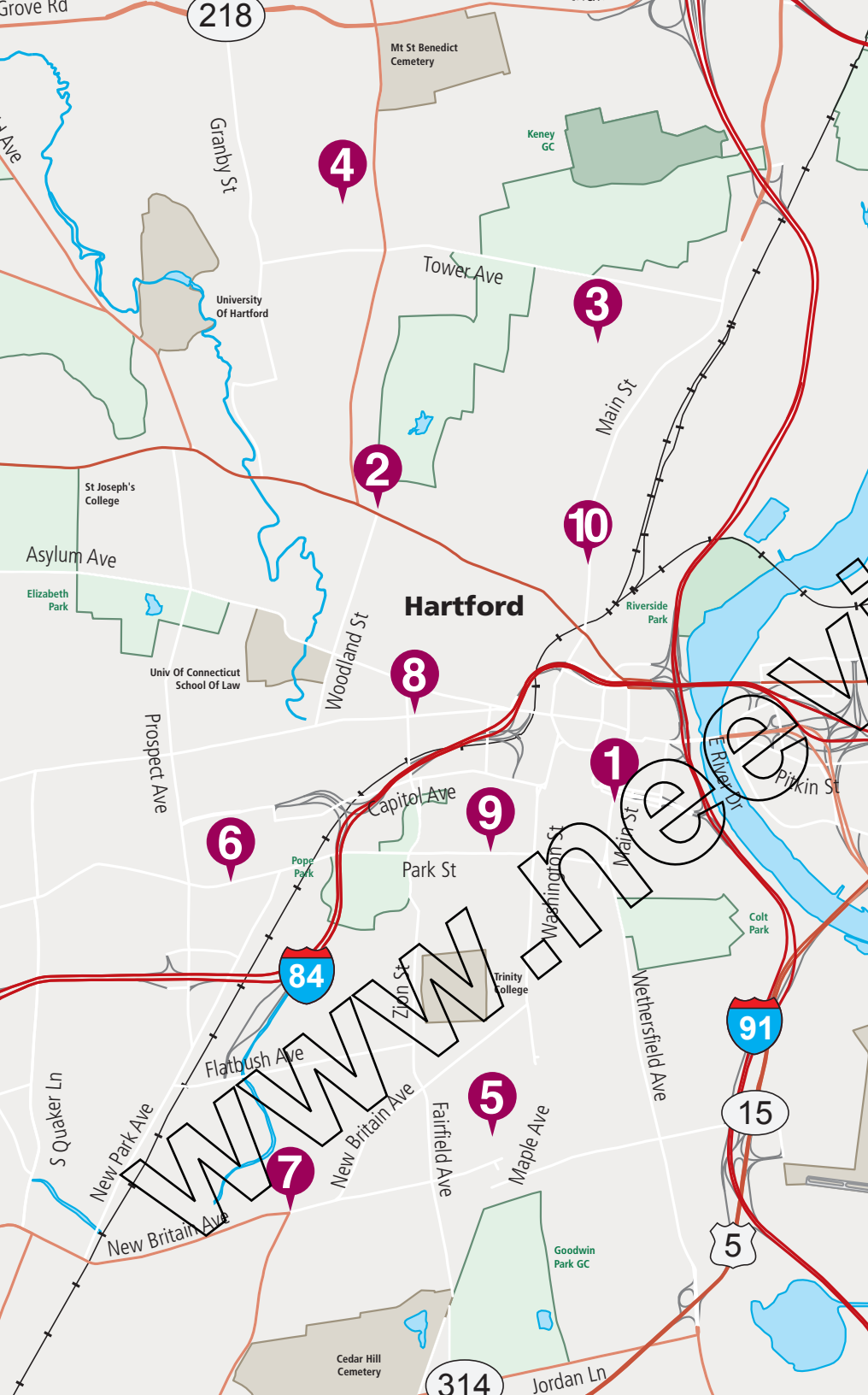
Matthew K. Poland, *Chief Executive Officer*  
 Mary Billings, *Chief Public Services Officer*  
 Brenda Miller, *Chief Cultural Affairs and  
 Public Programming Officer*  
 Homa Naficy, *Chief Adult Learning Officer*  
 Mary T. Tzambazakis, *Chief Administrative  
 Officer*

## Corporators

Harold D. Abrams  
 Ana Alfaro  
 John F. Alves  
 Gregory E. Andrews  
 David Barrett  
 Jill Barrett  
 Paul Basch  
 Arline J. Baum  
 Linda A. Bayer  
 Shelley Best  
 Monica P. Blazic  
 David W. Bobowski  
 Sheldon M. Bustow  
 Annette W. Carter  
 Jo Champlin Casey  
 Barbara Chatfield  
 Biagio D. Ciotto  
 Maggie Alston Claud  
 Adam Cloud

Nicole Plessey Cloud  
 Sanford Cloud, Jr.  
 Ronald Cordilico  
 Rodrigo A. Correa  
 Mary B. Coursey  
 Mally Cox-Chapman  
 Keith V. Darby  
 Lawrence M. Davis  
 Andrew B. Diaz-Matos  
 Jennifer DiBella  
 Marc A. DiBella  
 Hyacinth Douglas-Bailey  
 Vernice W. Duke  
 Robert A. Emma  
 Jerry Franklin  
 Howard A. Fromson  
 Sandra Bender Fromson  
 Juanita Giles  
 Eunice S. Groark  
 Nancy D. Grover  
 Suzanne M. Hopgood  
 Myles N. Hubbard  
 Dorothy R. Jackson  
 Joan Jacobs-Williams  
 Kenneth D. Johnson  
 Judge Christine E. Keller  
 Jillian N. Kezerian  
 Joshua A. King  
 Herman LaFontaine  
 William M. Large  
 Lois F. Lewis  
 Stephanie Lightfoot  
 Jacquelyn C. Lilly  
 Frank C. Lord  
 Beverly A. Loughlin  
 James B. Lyon  
 Mary Elizabeth Mahler  
 Marcia McCormack  
 DUBY McDowell  
 Irene Melo  
 Thirman L. Milner  
 Thea Montañez  
 Jody Morneault  
 Marge Morrissey  
 John H. Motley  
 Timothy J. Moynihan  
 G. Stewart Murchie  
 Leah T. Murchie

Elizabeth B. Noel  
 Emily R. Noel  
 Elizabeth J. Norman  
 Lynn M. Olson-Douglas  
 Dr. Robert L. Painter  
 Daniel I. Papermaster  
 Flora Parisky  
 Margaret Patricelli  
 Brewster B. Perkins  
 David F. Ransom  
 James R. Reed, Jr.  
 Cynthia W. Reik  
 Enid M. Rey  
 Belle K. Ribicoff  
 Alfred R. Rogers  
 Jason Rojas  
 Nellie Uccello Romaine  
 Rosaida Rosario  
 Janice Rossetti  
 Marilyn E. Rossetti  
 Josephine W. Sale  
 Margaret C. Shanks  
 Christine Shaw  
 Paul D. Shipman  
 Bernadine Silvers  
 Ronald A. Simpson  
 Robert H. Smith, Jr.  
 Sharon W. Smith  
 Theodore M. Space  
 Arthur L. Spada  
 Jeffrey A. Stewart  
 John B. Stewart, Jr.  
 Richard Sugarman  
 Michael Suisman  
 Geraldine P. Sullivan  
 Shirley Surgeon  
 Allan B. Taylor  
 Elizabeth Taylor  
 Margaret V. Tedone  
 James Thompson  
 Samuel H. Title  
 Dr. Humphrey R. Tonkin  
 Antonina P. Uccello  
 Carlos Valinho  
 Walter Wick  
 Shawn T. Wooden



## Branch Locations

### 1 Downtown Library

500 Main Street  
860.695.6300  
M, T, W, Th 10-8 p.m.  
F, Sa 10-5 p.m.  
Su (Nov-April) 1-5 p.m.

### 2 Albany Branch

1250 Albany Avenue  
860.695.7380  
M, T, W 12:30-5:30 p.m.  
Th 12:30-7:30 p.m.  
F, Sa 12:30-5 p.m.

### 3 Barbour Branch

259 Barbour Street  
860.695.7400  
M, T, Th 12:30-5:30 p.m.  
W 12:30-7:30 p.m.  
F, Sa 12:30-5 p.m.

### 4 Blue Hills Branch

649 Blue Hills Avenue  
860.695.7420  
M, W, Th 12:30-5:30 p.m.  
T 12:30-7:30 p.m.  
F 12:30-5 p.m.

### 5 Camp Field Branch

30 Campfield Avenue  
860.695.7440  
M, T, W 12:30-5:30 p.m.  
Th 12:30-7:30 p.m.  
F, Sa 12:30-5 p.m.

### 6 Dwight Branch

7 New Park Avenue  
860.695.7460  
M, T, Th 12:30-5:30 p.m.  
W 12:30-7:30 p.m.  
F, Sa 12:30-5 p.m.

### 7 Goodwin Branch

460 New Britain Avenue  
860.695.7480  
M, W, Th 12:30-5:30 p.m.  
T 12:30-7:30 p.m.  
F, Sa 12:30-5 p.m.

### 8 Mark Twain Branch

55 Forest Street  
860.695.7540  
M 12:30-7:30 p.m.  
T, W, Th 12:30-5:30 p.m.  
F 12:30-5 p.m.  
Sa 9-1 p.m.

### 9 Park Branch

744 Park Street  
860.695.7500  
M 12:30-7:30 p.m.  
T, W, Th 12:30-5:30 p.m.  
F 12:30-5 p.m.

### 10 SAND/Ropkins Branch

1750 Main Street  
860.695.7520  
M, T, Th 12:30-5:30 p.m.  
W 12:30-7:30 p.m.  
F 12:30-5 p.m.