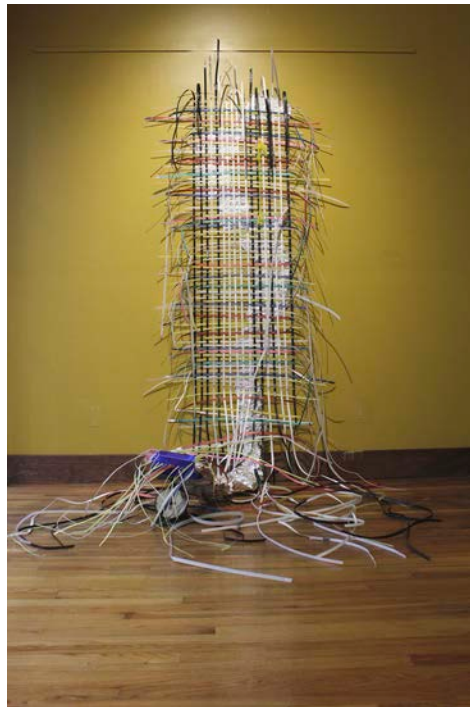


**FOR IMMEDIATE RELEASE**

**“Upcycled” Exhibit Opens December 5 at Hartford Public Library’s ArtWalk  
Gallery**



**Hartford, Connecticut (November 6, 2014)** - Hartford Public Library announces the December 5th opening of *UPcycled Sampler*, an exhibit by Anita Gangi Balkun, at its Downtown ArtWalk gallery. The exhibit includes a large hanging installation piece designed specifically for the gallery space, and will be on display during regular Library hours through January 9, 2015.

A celebratory reception with the artist will take place on the night of December 5th from 6:00-8:00 p.m. and is free and open to the public. Visitors to the 25th Annual Open Studio Hartford Weekend will be able to view a sneak peek of the exhibit on Saturday and Sunday November 15 and 16 from 1:00-3:00 p.m., and have the opportunity to take part in the completion of the installation.

“My work reuses stuff headed for the recycle bin or trash and transforms it into unexpected forms,” Balkun explains. UPcycled Sampler contains materials such as packing peanuts, construction fencing, and newspaper. The artist says she “often search[es] for content within the history of the object - its use or its journey - and use[es] that information as a springboard to the form.”

A resident of West Hartford, Balkun received her M.F.A. from the Hartford Art School at the University of Hartford and a B.A. from Central Connecticut State University. She has been featured in various exhibits throughout Connecticut and is the recipient of several awards, most recently earning 2nd Place in the West Hartford Art League’s 2014 CT+6 Regional Juried Exhibit.

The ArtWalk at Hartford Public Library is located at 500 Main Street, Hartford. For more information, please visit [artwalk.hplct.org](http://artwalk.hplct.org).

## **ABOUT THE ARTWALK**

ArtWalk at Hartford Public Library offers one of the largest and most stunning exhibition spaces in greater Hartford and the opportunity for visitors to view art in a magnificent setting in their own community. The state-of-the-art gallery rises above Main Street along a glass wall that floods the space with ambient light during the day and appears to glow as a jewel box at night. Exhibitions offer an array of art experiences that reflect a variety of media, styles, and cultures in the art world, providing diverse viewing experiences, and allowing for many tastes. Because of the unusual cable system in place, one of the most unique aspects of the ArtWalk is that any wall and lighting configuration or arrangement can change with the nature of every new exhibition. The ArtWalk is made possible through the generosity of donors, especially the Beatrice Fox Auerbach Foundation Fund at Hartford Foundation for Public Giving. [Artwalk.hplct.org](http://Artwalk.hplct.org)

## **ABOUT [HARTFORD PUBLIC LIBRARY](#)**

As a finalist for the 2014 National Medal from the Institute for Museum and Library Services, Hartford Public Library has been recognized as national leader in redefining the urban public library in the 21st century as an innovative and stimulating place where people can learn and discover, explore their passions, and find a rich array of resources that contribute to a full life. Hartford Public Library provides free resources that inspire reading, guide learning, and encourage individual exploration. Serving the residents of Hartford and beyond at its nine branches and Downtown location, Hartford Public Library receives more than 860,000 visits per year from adults, children and families seeking early literacy

opportunities, work skills training, civic engagement, arts enrichment, and so much more. Visit [hplct.org](http://hplct.org).

###